

Datasheet for ABIN3017330
anti-RAD50 antibody (AA 1-100)

3 Images

1 Publication

[Go to Product page](#)

Overview

Quantity:	100 µL
Target:	RAD50
Binding Specificity:	AA 1-100
Reactivity:	Human
Host:	Rabbit
Clonality:	Polyclonal
Conjugate:	This RAD50 antibody is un-conjugated
Application:	Western Blotting (WB), Immunohistochemistry (IHC), Immunoprecipitation (IP)

Product Details

Immunogen:	A synthetic peptide corresponding to a sequence within amino acids 1-100 of human Rad50 (NP_005723.2).
Sequence:	MSRIEKMSIL GVRSFIEDK DKQITFFSP LTILVGPNGA GKTTIIECLK YICTGDFPPG TKGNTFVHDP KVAQETDVRA QIRLQFRDVN GELIAVQRSM
Isotype:	IgG
Cross-Reactivity:	Human, Mouse, Rat
Characteristics:	Polyclonal Antibodies

Target Details

Target:	RAD50
---------	-------

Target Details

Alternative Name:	RAD50 (RAD50 Products)
Background:	The protein encoded by this gene is highly similar to <i>Saccharomyces cerevisiae</i> Rad50, a protein involved in DNA double-strand break repair. This protein forms a complex with MRE11 and NBS1. The protein complex binds to DNA and displays numerous enzymatic activities that are required for nonhomologous joining of DNA ends. This protein, cooperating with its partners, is important for DNA double-strand break repair, cell cycle checkpoint activation, telomere maintenance, and meiotic recombination. Knockout studies of the mouse homolog suggest this gene is essential for cell growth and viability. Mutations in this gene are the cause of Nijmegen breakage syndrome-like disorder.,RAD50,NBSLD,RAD502,hRad50,Epigenetics & Nuclear Signaling,DNA Damage & Repair,Cell Biology & Developmental Biology,Cell Cycle,G2/M DNA Damage Checkpoint,RAD50
Molecular Weight:	138 kDa/153 kDa/154 kDa
Gene ID:	10111
UniProt:	Q92878
Pathways:	DNA Damage Repair , Protein targeting to Nucleus

Application Details

Application Notes:	WB,1:500 - 1:2000,IHC,1:50 - 1:200,IP,1:20 - 1:50
Restrictions:	For Research Use only

Handling

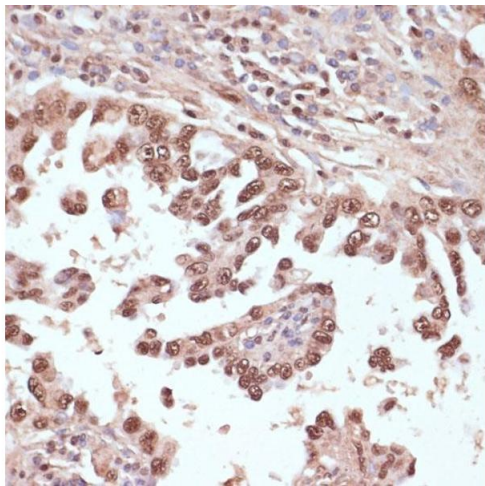
Buffer:	PBS with 0.02 % sodium azide,50 % glycerol, pH 7.3.
Preservative:	Sodium azide
Precaution of Use:	This product contains Sodium azide: a POISONOUS AND HAZARDOUS SUBSTANCE which should be handled by trained staff only.
Storage:	-20 °C
Storage Comment:	Store at -20°C. Avoid freeze / thaw cycles.

Publications

Product cited in:	Liu, Yuan, Zhou, Zhao, Chen, Cheng, Lu, Liu: "Phloretin attenuates hyperuricemia-induced endothelial dysfunction through co-inhibiting inflammation and GLUT9-mediated uric acid
-------------------	--

uptake." in: **Journal of cellular and molecular medicine**, Vol. 21, Issue 10, pp. 2553-2562, (2018)
) ([PubMed](#)).

Images

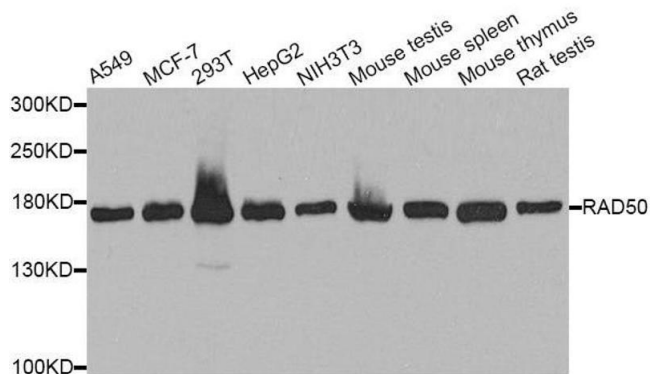


Immunohistochemistry

Image 1. Immunohistochemistry of paraffin-embedded human lung cancer using Rad50 antibody (ABIN3017329, ABIN3017330, ABIN3017331 and ABIN6220043) at dilution of 1:100 (40x lens). Perform microwave antigen retrieval with 10 mM PBS buffer pH 7.2 before commencing with IHC staining protocol.

Western Blotting

Image 2. Western blot analysis of extracts of various cell lines, using RAD50 antibody.



Immunoprecipitation

Image 3. Immunoprecipitation analysis of 150ug extracts of MCF7 cells using 3ug RAD50 antibody.

