



[Go to Product page](#)

Datasheet for ABIN3017510
anti-CSF2RA antibody (AA 23-150)

3 Images

Overview

Quantity:	100 µL
Target:	CSF2RA
Binding Specificity:	AA 23-150
Reactivity:	Human
Host:	Rabbit
Clonality:	Polyclonal
Conjugate:	This CSF2RA antibody is un-conjugated
Application:	Immunofluorescence (IF)

Product Details

Immunogen:	Recombinant fusion protein containing a sequence corresponding to amino acids 23-150 of human CSF2RA (NP_001155001.1).
Sequence:	EKSDLRTVAP ASSLNVRFDS RTMNLSWDCQ ENTTFSKCFL TDKKNRVVEP RLSNNECSCT FREICLHEGV TFEVHVNTSQ RGFQQKLLYP NSGREGTAAQ NFSCFIYNAD LMNCTWARGP TAPRDVQY
Isotype:	IgG
Cross-Reactivity:	Human, Mouse
Characteristics:	Polyclonal Antibodies
Purification:	Affinity purification

Target Details

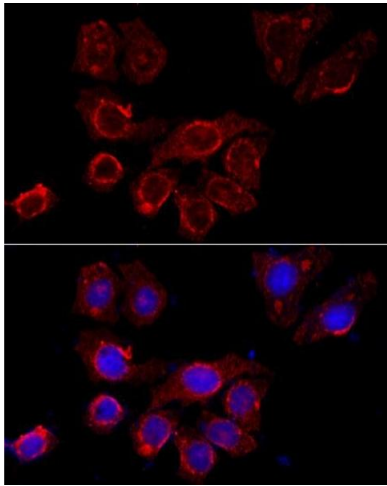
Target:	CSF2RA
Alternative Name:	CSF2RA (CSF2RA Products)
Background:	<p>The protein encoded by this gene is the alpha subunit of the heterodimeric receptor for colony stimulating factor 2, a cytokine which controls the production, differentiation, and function of granulocytes and macrophages. The encoded protein is a member of the cytokine family of receptors. This gene is found in the pseudoautosomal region (PAR) of the X and Y chromosomes. Multiple transcript variants encoding different isoforms have been found for this gene, with some of the isoforms being membrane-bound and others being soluble.,CSF2RA,CD116,CDw116,CSF2R,CSF2RAX,CSF2RAY,CSF2RX,CSF2RY,GM-CSF-R-alpha,GMCSFR,GMR,SMDP4,Immunology & Inflammation,CD markers,Cytokines,Cell Intrinsic Innate Immunity Signaling Pathway,Stem Cells,Mesenchymal Stem Cells,CSF2RA</p>
Molecular Weight:	26 kDa/31 kDa/32 kDa/38 kDa/43 kDa/46 kDa/49 kDa
Gene ID:	1438
UniProt:	P15509
Pathways:	JAK-STAT Signaling

Application Details

Application Notes:	IF,1:50 - 1:200
Restrictions:	For Research Use only

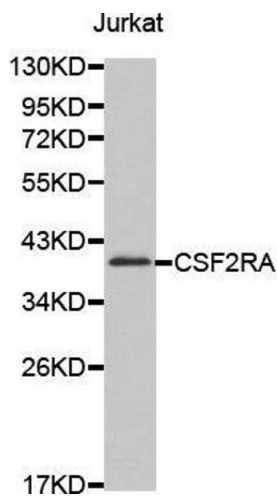
Handling

Buffer:	PBS with 0.02 % sodium azide,50 % glycerol, pH 7.3.
Preservative:	Sodium azide
Precaution of Use:	This product contains Sodium azide: a POISONOUS AND HAZARDOUS SUBSTANCE which should be handled by trained staff only.
Storage:	-20 °C
Storage Comment:	Store at -20°C. Avoid freeze / thaw cycles.



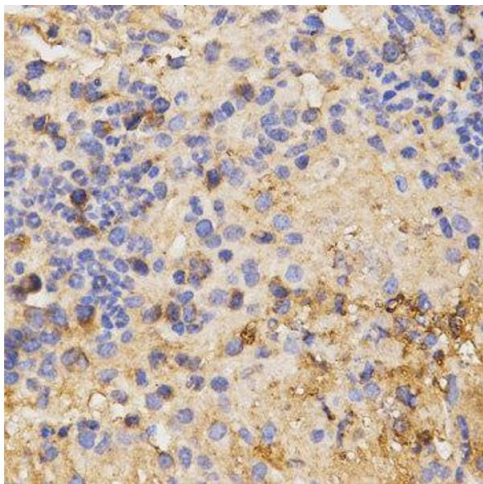
Immunofluorescence

Image 1. Immunofluorescence analysis of HeLa cells using CSF2RA antibody (ABIN3017509, ABIN3017510, ABIN3017511 and ABIN6220125) at dilution of 1:100 (40x lens). Blue: DAPI for nuclear staining.



Western Blotting

Image 2. Western blot analysis of extracts of Jurkat cell line, using CSF2RA antibody.



Immunohistochemistry

Image 3.