



Datasheet for ABIN3017529
anti-NPY antibody (AA 1-97)



[Go to Product page](#)

5 Images

Overview

Quantity:	100 µL
Target:	NPY
Binding Specificity:	AA 1-97
Reactivity:	Human
Host:	Rabbit
Clonality:	Polyclonal
Conjugate:	This NPY antibody is un-conjugated
Application:	Western Blotting (WB), Immunohistochemistry (IHC), Immunofluorescence (IF)

Product Details

Immunogen:	Recombinant fusion protein containing a sequence corresponding to amino acids 1-97 of human NPY (NP_000896.1).
Sequence:	MLGNKRLGLS GLTLALSLLV CLGALAEAYP SKPDNPGEDA PAEDMARYYS ALRHYNLIT RQRYGKRSSP ETLISDLLMR ESTENVPRTR LEDPAMW
Isotype:	IgG
Cross-Reactivity:	Human, Mouse, Rat
Characteristics:	Polyclonal Antibodies

Target Details

Target:	NPY
---------	-----

Target Details

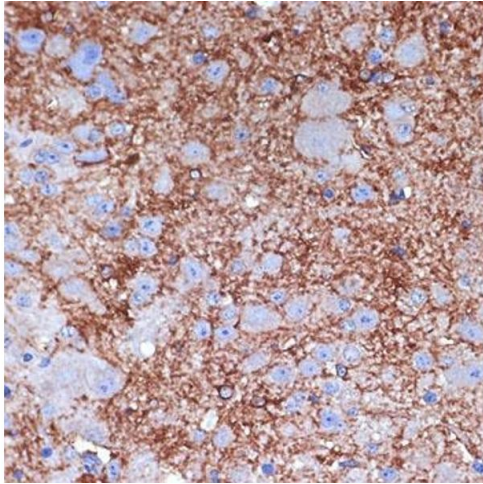
Alternative Name:	NPY (NPY Products)
Background:	<p>This gene encodes a neuropeptide that is widely expressed in the central nervous system and influences many physiological processes, including cortical excitability, stress response, food intake, circadian rhythms, and cardiovascular function. The neuropeptide functions through G protein-coupled receptors to inhibit adenylyl cyclase, activate mitogen-activated protein kinase (MAPK), regulate intracellular calcium levels, and activate potassium channels. A polymorphism in this gene resulting in a change of leucine 7 to proline in the signal peptide is associated with elevated cholesterol levels, higher alcohol consumption, and may be a risk factor for various metabolic and cardiovascular diseases. The protein also exhibits antimicrobial activity against bacteria and fungi.,NPY,PYY4,Cancer,Signal Transduction,G protein signaling,G-Protein-Coupled Receptors(GPCR),Endocrine & Metabolism,Neuroscience,Cardiovascular,Angiogenesis,Heart,Contractility,Hypertrophy,NPY</p>
Molecular Weight:	10 kDa
Gene ID:	4852
UniProt:	P01303
Pathways:	Feeding Behaviour

Application Details

Application Notes:	WB,1:500 - 1:2000,IHC,1:50 - 1:200,IF,1:50 - 1:200
Restrictions:	For Research Use only

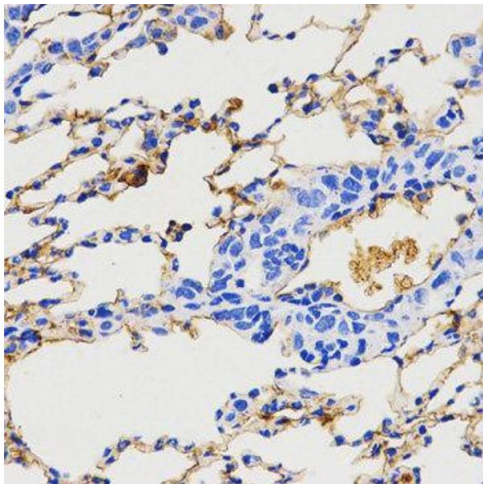
Handling

Buffer:	PBS with 0.02 % sodium azide,50 % glycerol, pH 7.3.
Preservative:	Sodium azide
Precaution of Use:	This product contains Sodium azide: a POISONOUS AND HAZARDOUS SUBSTANCE which should be handled by trained staff only.
Storage:	-20 °C
Storage Comment:	Store at -20°C. Avoid freeze / thaw cycles.



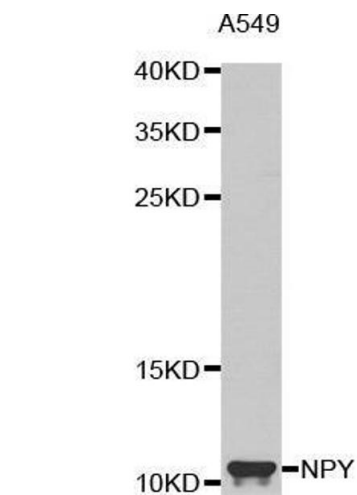
Immunohistochemistry

Image 1. Immunohistochemistry of paraffin-embedded mouse spinal cord using NPY Rabbit pAb (ABIN3017528, ABIN3017529, ABIN3017530 and ABIN6220138) at dilution of 1:100 (40x lens). Perform microwave antigen retrieval with 10 mM Tris/EDTA buffer pH 9.0 before commencing with IHC staining protocol.



Immunohistochemistry

Image 2.



Western Blotting

Image 3. Western blot analysis of extracts of A549 cell line, using NPY antibody.

Please check the [product details page](#) for more images. Overall 5 images are available for ABIN3017529.