

Datasheet for ABIN3017653  
**anti-CBX2 antibody**



[Go to Product page](#)

1 Image

## Overview

Quantity:	500 µL
Target:	CBX2
Reactivity:	Human
Host:	Rabbit
Clonality:	Monoclonal
Conjugate:	This CBX2 antibody is un-conjugated
Application:	Western Blotting (WB)

## Product Details

Immunogen:	A synthesized peptide derived from human CBX2
Isotype:	IgG
Cross-Reactivity:	Human, Mouse, Rat
Characteristics:	Monoclonal Antibodies
Purification:	Affinity purification

## Target Details

Target:	CBX2
Alternative Name:	CBX2 ( <a href="#">CBX2 Products</a> )
Background:	This gene encodes a component of the polycomb multiprotein complex, which is required to maintain the transcriptionally repressive state of many genes throughout development via

Target Details

chromatin remodeling and modification of histones. Disruption of this gene in mice results in male-to-female gonadal sex reversal. Mutations in this gene are also associated with gonadal dysgenesis in humans. Alternatively spliced transcript variants encoding different isoforms have been noted for this gene.[provided by RefSeq, Mar 2010],CDCA6, M33, SRXY5,Chromatin Remodeling,Epigenetics & Nuclear Signaling,CBX2

Molecular Weight: 56 kDa

Gene ID: 84733

UniProt: [Q14781](#)

Application Details

Application Notes: WB,1:500 - 1:2000

Restrictions: For Research Use only

Handling

Buffer: PBS with 0.02 % sodium azide,0.05 % BSA,50 % glycerol, pH 7.3.

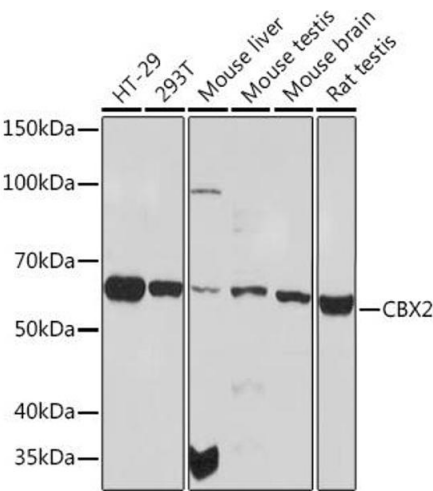
Preservative: Sodium azide

Precaution of Use: This product contains Sodium azide: a POISONOUS AND HAZARDOUS SUBSTANCE which should be handled by trained staff only.

Storage: -20 °C

Storage Comment: Store at -20°C. Avoid freeze / thaw cycles.

Images



Western Blotting

**Image 1.** Western blot analysis of extracts of various cell lines, using CBX2 Rabbit mAb (ABIN1679821, ABIN3017652, ABIN3017653 and ABIN7101515) at 1:1000 dilution.Secondary antibody: HRP Goat Anti-Rabbit IgG (H+L) (ABIN1684268 and ABIN3020597) at 1:10000 dilution.Lysates/proteins: 25 µg per lane.Blocking buffer: 3 % nonfat dry milk in TBST.Detection: ECL Basic Kit (RM00020).Exposure time: 90s.