

Datasheet for ABIN3018644  
**anti-MSMB antibody**



[Go to Product page](#)

2 Images

## Overview

Quantity:	500 µL
Target:	MSMB
Reactivity:	Human
Host:	Rabbit
Clonality:	Monoclonal
Conjugate:	This MSMB antibody is un-conjugated
Application:	Western Blotting (WB), Immunofluorescence (IF)

## Product Details

Immunogen:	A synthesized peptide derived from human MSMB
Isotype:	IgG
Cross-Reactivity:	Human, Mouse
Characteristics:	Monoclonal Antibodies
Purification:	Affinity purification

## Target Details

Target:	MSMB
Alternative Name:	MSMB ( <a href="#">MSMB Products</a> )
Background:	The protein encoded by this gene is a member of the immunoglobulin binding factor family. It is synthesized by the epithelial cells of the prostate gland and secreted into the seminal plasma.

## Target Details

This protein has inhibin-like activity. It may have a role as an autocrine paracrine factor in uterine, breast and other female reproductive tissues. The expression of the encoded protein is found to be decreased in prostate cancer. Two alternatively spliced transcript variants encoding different isoforms are described for this gene. The use of alternate polyadenylation sites has been found for this gene. [provided by RefSeq, Jul 2008],HPC13, IGBF, MSP, MSPB, PN44, PRPS, PSP, PSP-94, PSP57, PSP94,MSMB

Molecular Weight:	15 kDa
-------------------	--------

Gene ID:	4477
----------	------

UniProt:	<a href="#">P08118</a>
----------	------------------------

## Application Details

Application Notes:	WB,1:500 - 1:2000,IF,1:50 - 1:200
--------------------	-----------------------------------

Restrictions:	For Research Use only
---------------	-----------------------

## Handling

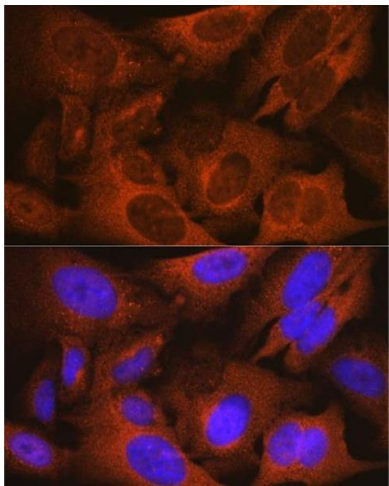
Buffer:	PBS with 0.02 % sodium azide,0.05 % BSA,50 % glycerol, pH 7.3.
---------	--

Preservative:	Sodium azide
---------------	--------------

Precaution of Use:	This product contains Sodium azide: a POISONOUS AND HAZARDOUS SUBSTANCE which should be handled by trained staff only.
--------------------	--

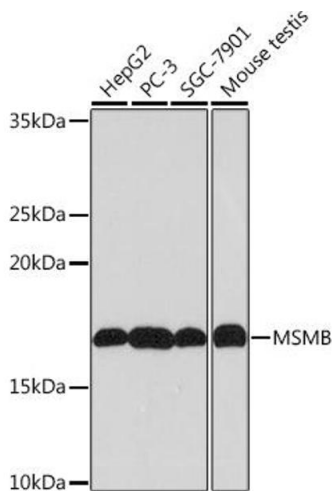
Storage:	-20 °C
----------	--------

Storage Comment:	Store at -20°C. Avoid freeze / thaw cycles.
------------------	---



Immunofluorescence

**Image 1.** Immunofluorescence analysis of U-2 OS cells using MSMB Rabbit mAb (ABIN1681107, ABIN3018643, ABIN3018644 and ABIN7101636) at dilution of 1:100 (40x lens). Blue: DAPI for nuclear staining.



Western Blotting

**Image 2.** Western blot analysis of extracts of various cell lines, using MSMB Rabbit mAb (ABIN1681107, ABIN3018643, ABIN3018644 and ABIN7101636) at 1:1000 dilution. Secondary antibody: HRP Goat Anti-Rabbit IgG (H+L) (ABIN1684268 and ABIN3020597) at 1:10000 dilution. Lysates/proteins: 25 µg per lane. Blocking buffer: 3 % nonfat dry milk in TBST. Detection: ECL Basic Kit (RM00020). Exposure time: 90s.