

Datasheet for ABIN3018860  
**anti-PPP1CB antibody**

## 6 Images

[Go to Product page](#)

## Overview

Quantity:	500 µL
Target:	PPP1CB
Reactivity:	Human
Host:	Rabbit
Clonality:	Monoclonal
Conjugate:	This PPP1CB antibody is un-conjugated
Application:	Western Blotting (WB), Immunohistochemistry (IHC), Immunofluorescence (IF)

## Product Details

Immunogen:	A synthesized peptide derived from human PP1 beta
Isotype:	IgG
Cross-Reactivity:	Human, Mouse, Rat
Characteristics:	Monoclonal Antibodies
Purification:	Affinity purification

## Target Details

Target:	PPP1CB
Alternative Name:	PPP1CB ( <a href="#">PPP1CB Products</a> )
Background:	The protein encoded by this gene is one of the three catalytic subunits of protein phosphatase 1 (PP1). PP1 is a serine/threonine specific protein phosphatase known to be involved in the

## Target Details

regulation of a variety of cellular processes, such as cell division, glycogen metabolism, muscle contractility, protein synthesis, and HIV-1 viral transcription. Mouse studies suggest that PP1 functions as a suppressor of learning and memory. Two alternatively spliced transcript variants encoding distinct isoforms have been observed. [provided by RefSeq, Jul 2008],HEL-S-80p, PP-1B, PP1B, PP1beta, PPP1CD,Cancer,Endocrine & Metabolism,Epigenetics & Nuclear Signaling,Insulin Receptor Signaling Pathway,Lipid Metabolism,MAPK-Erk Signaling Pathway,Neurodegenerative Diseases,Neurodegenerative Diseases\_Dopamine Signaling in Parkinsons Disease,Neuroscience,Signal Transduction,Translation Control,Translational Control\_Regulation of eIF2,PPP1CB

Molecular Weight: 37 kDa

Gene ID: 5500

UniProt: [P62140](#)

Pathways: [M Phase](#), [Cellular Glucan Metabolic Process](#), [Regulation of Carbohydrate Metabolic Process](#), [Lipid Metabolism](#)

## Application Details

Application Notes: WB,1:500 - 1:2000,IHC,1:50 - 1:200,IF,1:50 - 1:200

Restrictions: For Research Use only

## Handling

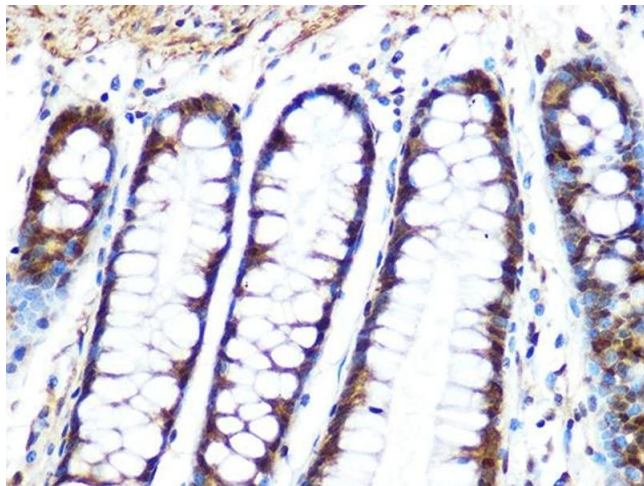
Buffer: PBS with 0.02 % sodium azide,0.05 % BSA,50 % glycerol, pH 7.3.

Preservative: Sodium azide

Precaution of Use: This product contains Sodium azide: a POISONOUS AND HAZARDOUS SUBSTANCE which should be handled by trained staff only.

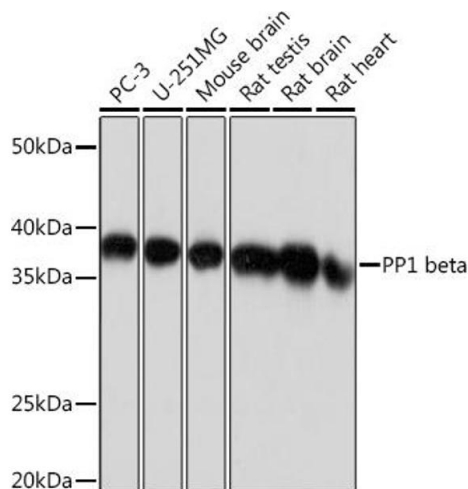
Storage: -20 °C

Storage Comment: Store at -20°C. Avoid freeze / thaw cycles.



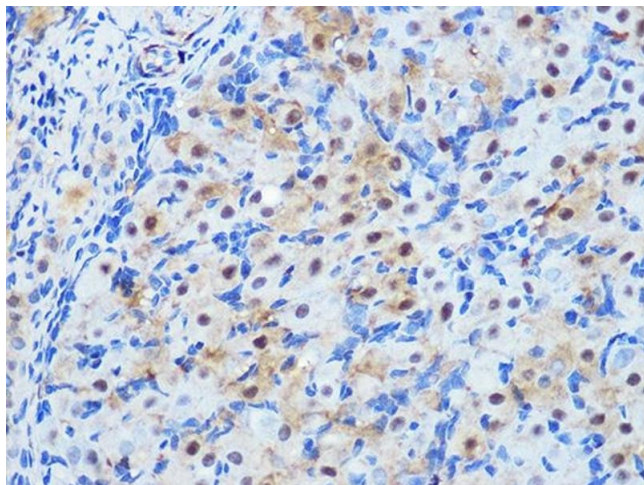
#### Immunohistochemistry

**Image 1.** Immunohistochemistry of paraffin-embedded human colon using PP1 beta Rabbit mAb (ABIN1679819, ABIN3018859, ABIN3018860 and ABIN7101675) at dilution of 1:100 (40x lens). Perform microwave antigen retrieval with 10 mM PBS buffer pH 7.2 before commencing with IHC staining protocol.



#### Western Blotting

**Image 2.** Western blot analysis of extracts of various cell lines, using PP1 beta Rabbit mAb (ABIN1679819, ABIN3018859, ABIN3018860 and ABIN7101675) at 1:1000 dilution. Secondary antibody: HRP Goat Anti-Rabbit IgG (H+L) (ABIN1684268 and ABIN3020597) at 1:10000 dilution. Lysates/proteins: 25 µg per lane. Blocking buffer: 3 % nonfat dry milk in TBST. Detection: ECL Basic Kit (RM00020). Exposure time: 1s.



#### Immunohistochemistry

**Image 3.** Immunohistochemistry of paraffin-embedded rat ovary using PP1 beta Rabbit mAb (ABIN1679819, ABIN3018859, ABIN3018860 and ABIN7101675) at dilution of 1:100 (40x lens). Perform microwave antigen retrieval with 10 mM PBS buffer pH 7.2 before commencing with IHC staining protocol.

Please check the [product details page](#) for more images. Overall 6 images are available for ABIN3018860.