

Datasheet for ABIN3018928  
**anti-ITPR1 antibody**

5 Images



[Go to Product page](#)

## Overview

Quantity:	500 µL
Target:	ITPR1
Reactivity:	Human
Host:	Rabbit
Clonality:	Monoclonal
Conjugate:	This ITPR1 antibody is un-conjugated
Application:	Immunohistochemistry (IHC), Western Blotting (WB), Immunofluorescence (IF)

## Product Details

Immunogen:	A synthesized peptide derived from human IP3R
Isotype:	IgG
Cross-Reactivity:	Mouse, Rat
Characteristics:	Monoclonal Antibodies
Purification:	Affinity purification

## Target Details

Target:	ITPR1
Alternative Name:	ITPR1 ( <a href="#">ITPR1 Products</a> )
Background:	This gene encodes an intracellular receptor for inositol 1,4,5-trisphosphate. Upon stimulation by inositol 1,4,5-trisphosphate, this receptor mediates calcium release from the endoplasmic

## Target Details

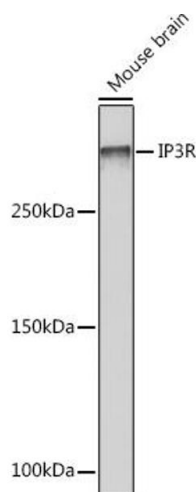
	reticulum. Mutations in this gene cause spinocerebellar ataxia type 15, a disease associated with an heterogeneous group of cerebellar disorders. Multiple transcript variants have been identified for this gene. [provided by RefSeq, Nov 2009],ACV, CLA4, INSP3R1, IP3R, IP3R1, PPP1R94, SCA15, SCA16, SCA29,B Cell Receptor Signaling Pathway,Calcium Signaling,Cancer,Endocrine & Metabolism,G protein signaling,Immunology & Inflammation,Neurodegenerative Diseases,Neuroscience,Phospholipase Signaling Pathway,Protein phosphorylation,Signal Transduction,T Cell Receptor Signaling Pathway,ITPR1
Molecular Weight:	314 kDa
Gene ID:	3708
UniProt:	<a href="#">Q14643</a>
Pathways:	<a href="#">Fc-epsilon Receptor Signaling Pathway</a> , <a href="#">EGFR Signaling Pathway</a> , <a href="#">Neurotrophin Signaling Pathway</a> , <a href="#">Thyroid Hormone Synthesis</a> , <a href="#">Myometrial Relaxation and Contraction</a> , <a href="#">Synaptic Membrane</a> , <a href="#">G-protein mediated Events</a> , <a href="#">Interaction of EGFR with phospholipase C-gamma</a>

## Application Details

Application Notes:	WB,1:500 - 1:2000,IHC,1:50 - 1:200,IF,1:50 - 1:200
Restrictions:	For Research Use only

## Handling

Buffer:	PBS with 0.02 % sodium azide,0.05 % BSA,50 % glycerol, pH 7.3.
Preservative:	Sodium azide
Precaution of Use:	This product contains Sodium azide: a POISONOUS AND HAZARDOUS SUBSTANCE which should be handled by trained staff only.
Storage:	-20 °C
Storage Comment:	Store at -20°C. Avoid freeze / thaw cycles.

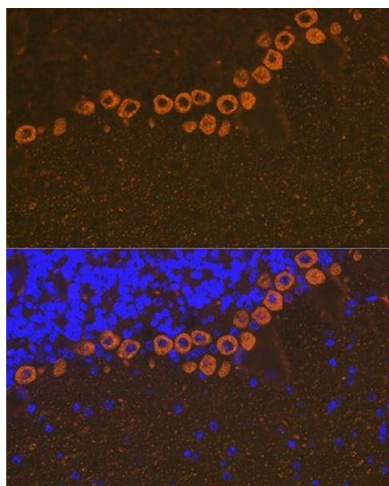


Western Blotting

**Image 1.** Western blot analysis of extracts of Mouse brain, using IP3R Rabbit mAb (ABIN1679064, ABIN3018927, ABIN3018928 and ABIN7101690) at 1:1000 dilution. Secondary antibody: HRP Goat Anti-Rabbit IgG (H+L) (ABIN1684268 and ABIN3020597) at 1:10000 dilution. Lysates/proteins: 25 µg per lane. Blocking buffer: 3 % nonfat dry milk in TBST. Detection: ECL Basic Kit (RM00020). Exposure time: 90s.

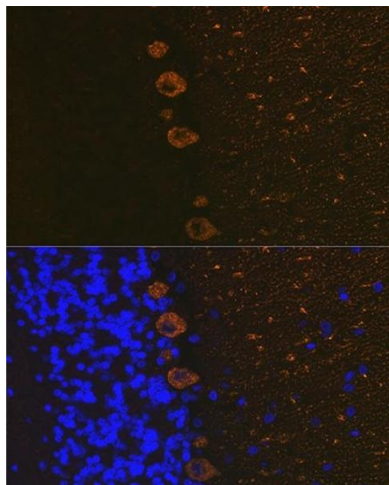
Immunofluorescence

**Image 2.** Immunofluorescence analysis of mouse brain using IP3R Rabbit mAb (ABIN1679064, ABIN3018927, ABIN3018928 and ABIN7101690) at dilution of 1:100 (40x lens). Blue: DAPI for nuclear staining.



Immunofluorescence

**Image 3.** Immunofluorescence analysis of rat brain using IP3R Rabbit mAb (ABIN1679064, ABIN3018927, ABIN3018928 and ABIN7101690) at dilution of 1:100 (40x lens). Blue: DAPI for nuclear staining.



Please check the [product details page](#) for more images. Overall 5 images are available for ABIN3018928.