

Datasheet for ABIN3019443
anti-CDK1 antibody (pTyr15)



[Go to Product page](#)

9 Images 1 Publication

Overview

Quantity:	100 µL
Target:	CDK1
Binding Specificity:	pTyr15
Reactivity:	Human
Host:	Rabbit
Clonality:	Polyclonal
Conjugate:	This CDK1 antibody is un-conjugated
Application:	Western Blotting (WB), Immunohistochemistry (IHC), Immunofluorescence (IF), Immunoprecipitation (IP)

Product Details

Immunogen:	A synthetic phosphorylated peptide around Y15 of human CDK1 (NP_001777.1).
Sequence:	GTYGV
Isotype:	IgG
Cross-Reactivity:	Human, Mouse, Rat
Characteristics:	Phosphorylated Antibodies
Purification:	Affinity purification

Target Details

Target:	CDK1
---------	------

Target Details

Alternative Name:	CDK1 (CDK1 Products)
Background:	<p>The protein encoded by this gene is a member of the Ser/Thr protein kinase family. This protein is a catalytic subunit of the highly conserved protein kinase complex known as M-phase promoting factor (MPF), which is essential for G1/S and G2/M phase transitions of eukaryotic cell cycle. Mitotic cyclins stably associate with this protein and function as regulatory subunits. The kinase activity of this protein is controlled by cyclin accumulation and destruction through the cell cycle. The phosphorylation and dephosphorylation of this protein also play important regulatory roles in cell cycle control. Alternatively spliced transcript variants encoding different isoforms have been found for this gene.,CDK1,CDC2,CDC28A,P34CDC2,Epigenetics & Nuclear Signaling,Signal Transduction,G protein signaling,Kinase,Serine/threonine kinases,ErbB-HER Signaling Pathway,Cell Biology & Developmental Biology,Apoptosis,Cell Cycle,Centrosome,G2/M DNA Damage Checkpoint,Microtubules,Immunology & Inflammation,Neuroscience,Neurodegenerative Diseases,Protein phosphorylation,CDK1</p>
Molecular Weight:	27 kDa/34 kDa
Gene ID:	983
UniProt:	P06493
Pathways:	Cell Division Cycle , Fc-epsilon Receptor Signaling Pathway , Neurotrophin Signaling Pathway , Activation of Innate immune Response , Mitotic G1-G1/S Phases , DNA Replication , M Phase , Toll-Like Receptors Cascades , Synthesis of DNA

Application Details

Application Notes:	WB,1:500 - 1:1000,IHC,1:50 - 1:200,IF,1:50 - 1:100,IP,1:50 - 1:100
Restrictions:	For Research Use only

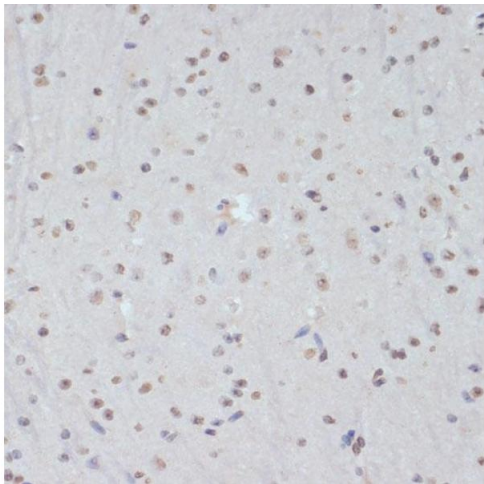
Handling

Buffer:	PBS with 0.02 % sodium azide,50 % glycerol, pH 7.3.
Preservative:	Sodium azide
Precaution of Use:	This product contains Sodium azide: a POISONOUS AND HAZARDOUS SUBSTANCE which should be handled by trained staff only.
Storage:	-20 °C
Storage Comment:	Store at -20°C. Avoid freeze / thaw cycles.

Publications

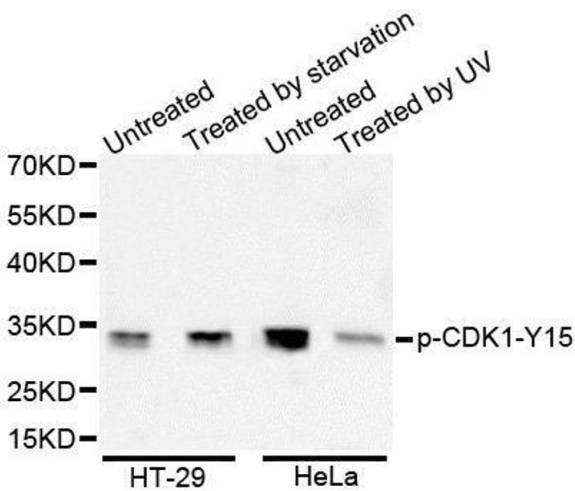
Product cited in: Liu, Fu, Sun, Wang, Geng, Wang, Zou, Bi, Yang et al.: "A New Perspective for Osteosarcoma Therapy: Proteasome Inhibition by MLN9708/2238 Successfully Induces Apoptosis and Cell Cycle Arrest and Attenuates the Invasion Ability of Osteosarcoma Cells in ..." in: **Cellular physiology and biochemistry : international journal of experimental cellular physiology, biochemistry, and pharmacology**, Vol. 41, Issue 2, pp. 451-465, (2017) ([PubMed](#)).

Images



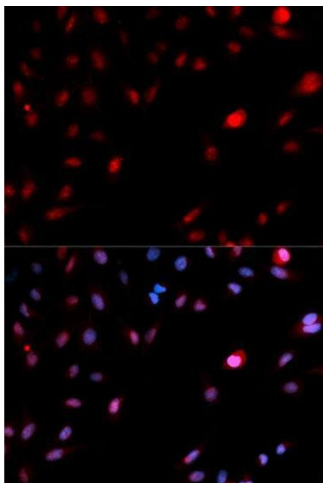
Immunohistochemistry

Image 1. Immunohistochemistry of paraffin-embedded mouse brain using Phospho-CDK1-Y15 antibody (ABIN3019442, ABIN3019443, ABIN3019444 and ABIN6225371) at dilution of 1:100 (40x lens). Perform microwave antigen retrieval with 10 mM Tris/EDTA buffer pH 9.0 before commencing with IHC staining protocol.



Western Blotting

Image 2.



Immunofluorescence

Image 3. Immunofluorescence analysis of MCF7 cell using Phospho-CDK1-Y15 antibody. Blue: DAPI for nuclear staining.

Please check the [product details page](#) for more images. Overall 9 images are available for ABIN3019443.