

Datasheet for ABIN3019485

anti-ASK1 antibody (pSer1033)**2** Images[Go to Product page](#)

Overview

Quantity:	100 µL
Target:	ASK1 (MAP3K5)
Binding Specificity:	pSer1033
Reactivity:	Human
Host:	Rabbit
Clonality:	Polyclonal
Conjugate:	This ASK1 antibody is un-conjugated
Application:	Western Blotting (WB)

Product Details

Immunogen:	A phospho specific peptide corresponding to residues surrounding S1033 of human MAP3K5
Isotype:	IgG
Cross-Reactivity:	Human, Mouse, Rat
Characteristics:	Phosphorylated Antibodies

Target Details

Target:	ASK1 (MAP3K5)
Alternative Name:	MAP3K5 (MAP3K5 Products)
Background:	Mitogen-activated protein kinase (MAPK) signaling cascades include MAPK or extracellular signal-regulated kinase (ERK), MAPK kinase (MKK or MEK), and MAPK kinase kinase (MAPKKK

Target Details

or MEKK). MAPKK kinase/MEKK phosphorylates and activates its downstream protein kinase, MAPK kinase/MEK, which in turn activates MAPK. The kinases of these signaling cascades are highly conserved, and homologs exist in yeast, Drosophila, and mammalian cells. MAPKKK5 contains 1,374 amino acids with all 11 kinase subdomains. Northern blot analysis shows that MAPKKK5 transcript is abundantly expressed in human heart and pancreas. The MAPKKK5 protein phosphorylates and activates MKK4 (aliases SERK1, MAPKK4) in vitro, and activates c-Jun N-terminal kinase (JNK)/stress-activated protein kinase (SAPK) during transient expression in COS and 293 cells, MAPKKK5 does not activate MAPK/ERK.,MAP3K5,ASK1,MAPKKK5,MEKK5,Signal Transduction,Kinase,Serine/threonine kinases,MAPK-JNK Signaling Pathway,MAPK-P38 Signaling Pathway,Cell Biology & Developmental Biology,Apoptosis,Cytoskeleton,Actins,Death Receptor Signaling Pathway,Immunology & Inflammation,B Cell Receptor Signaling Pathway,Neuroscience,Neurodegenerative Diseases,Cardiovascular,Heart,Hypertrophy,Protein phosphorylation,MAP3K5

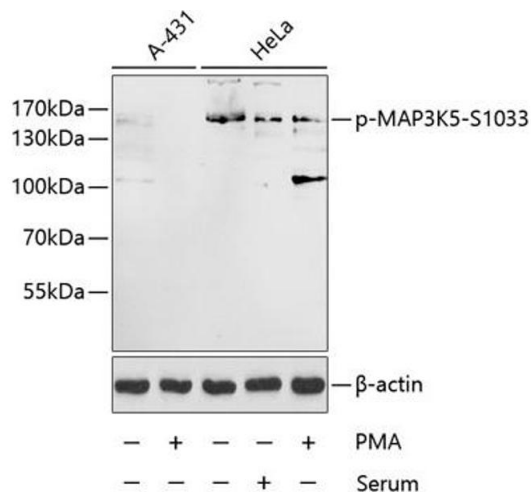
Molecular Weight:	69 kDa/154 kDa
Gene ID:	4217
UniProt:	Q99683
Pathways:	MAPK Signaling , Positive Regulation of Endopeptidase Activity , Unfolded Protein Response

Application Details

Application Notes:	WB,1:500 - 1:2000
Restrictions:	For Research Use only

Handling

Buffer:	PBS with 0.02 % sodium azide,50 % glycerol, pH 7.3.
Preservative:	Sodium azide
Precaution of Use:	This product contains Sodium azide: a POISONOUS AND HAZARDOUS SUBSTANCE which should be handled by trained staff only.
Storage:	-20 °C
Storage Comment:	Store at -20°C. Avoid freeze / thaw cycles.



Western Blotting

Image 1. Western blot analysis of extracts of A-431 and HeLa cells, using Phospho-MK5-S1033 antibody (ABIN3019484, ABIN3019485, ABIN3019486 and ABIN6225423) at 1:1000 dilution. cells were treated by PMA/TPA (200nM). HeLa cells were treated by 10 % FBS or treated by PMA/TPA (200nM) for 15 minutes after serum-starvation overnight. Secondary antibody: HRP Goat Anti-Rabbit IgG (H+L) (ABIN1684268 and ABIN3020597) at 1:10000 dilution. Lysates/proteins: 25 μ g per lane. Blocking buffer: 3 % BSA.

Western Blotting

Image 2.

