



[Go to Product page](#)

Datasheet for ABIN3019512
anti-MAP3K7 antibody (pSer412)

3 Images

Overview

Quantity:	100 µL
Target:	MAP3K7
Binding Specificity:	pSer412
Reactivity:	Human
Host:	Rabbit
Clonality:	Polyclonal
Conjugate:	This MAP3K7 antibody is un-conjugated
Application:	Western Blotting (WB)

Product Details

Immunogen:	A phospho specific peptide corresponding to residues surrounding S412 of human TAK1
Isotype:	IgG
Cross-Reactivity:	Human, Mouse, Rat
Characteristics:	Phosphorylated Antibodies

Target Details

Target:	MAP3K7
Alternative Name:	MAP3K7 (MAP3K7 Products)
Background:	The protein encoded by this gene is a member of the serine/threonine protein kinase family. This kinase mediates the signaling transduction induced by TGF beta and morphogenetic

Target Details

protein (BMP), and controls a variety of cell functions including transcription regulation and apoptosis. In response to IL-1, this protein forms a kinase complex including TRAF6, MAP3K7P1/TAB1 and MAP3K7P2/TAB2, this complex is required for the activation of nuclear factor kappa B. This kinase can also activate MAPK8/JNK, MAP2K4/MKK4, and thus plays a role in the cell response to environmental stresses. Four alternatively spliced transcript variants encoding distinct isoforms have been reported. CSCF, FMD2, MEKK7, TAK1, TGF1a, MAP3K7, Cancer, Signal Transduction, G protein signaling, G2/M DNA Damage Checkpoint, Kinase, Serine/threonine kinases, Tyrosine kinases, MAPK-Erk Signaling Pathway, MAPK-JNK Signaling Pathway, MAPK-P38 Signaling Pathway, Cell Biology & Developmental Biology, Apoptosis, Inhibition of Apoptosis, Cytoskeleton, Actins, TGF-b-Smad Signaling Pathway, Wnt/ β -Catenin Signaling Pathway, Immunology & Inflammation, B Cell Receptor Signaling Pathway, T Cell Receptor Signaling Pathway, NF-kB Signaling Pathway, Toll-like Receptor Signaling Pathway, Cell Intrinsic Innate Immunity Signaling Pathway, TLR Signaling, Cardiovascular, Protein phosphorylation, MAP3K7

Molecular Weight: 53 kDa/56 kDa/64 kDa/67 kDa

Gene ID: 6885

UniProt: [O43318](#)

Pathways: [NF-kappaB Signaling](#), [TCR Signaling](#), [TLR Signaling](#), [Fc-epsilon Receptor Signaling Pathway](#), [Activation of Innate immune Response](#), [Regulation of Leukocyte Mediated Immunity](#), [Positive Regulation of Immune Effector Process](#), [Production of Molecular Mediator of Immune Response](#), [Tube Formation](#), [Toll-Like Receptors Cascades](#), [BCR Signaling](#), [Ubiquitin Proteasome Pathway](#)

Application Details

Application Notes: WB, 1:500 - 1:2000

Restrictions: For Research Use only

Handling

Buffer: PBS with 0.02 % sodium azide, 50 % glycerol, pH 7.3.

Preservative: Sodium azide

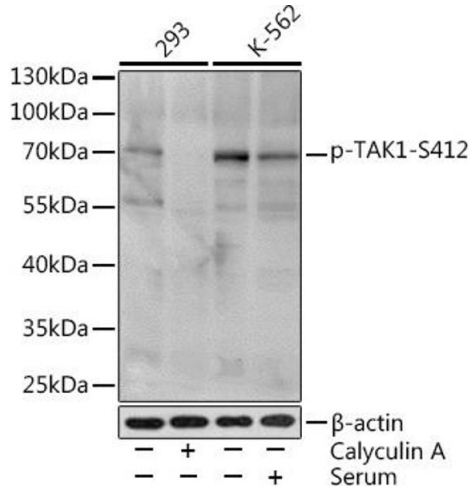
Precaution of Use: This product contains Sodium azide: a POISONOUS AND HAZARDOUS SUBSTANCE which

should be handled by trained staff only.

Storage: -20 °C

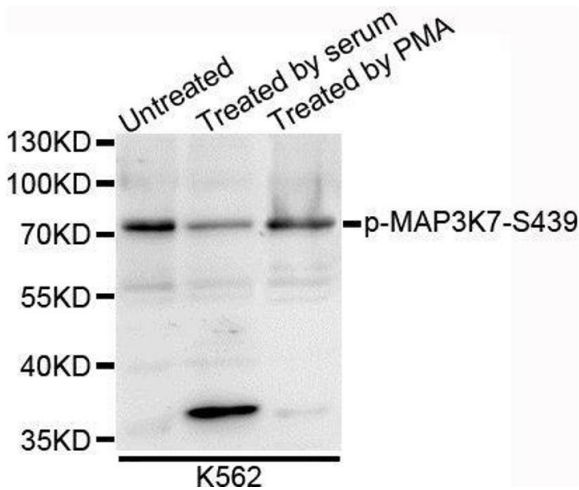
Storage Comment: Store at -20°C. Avoid freeze / thaw cycles.

Images



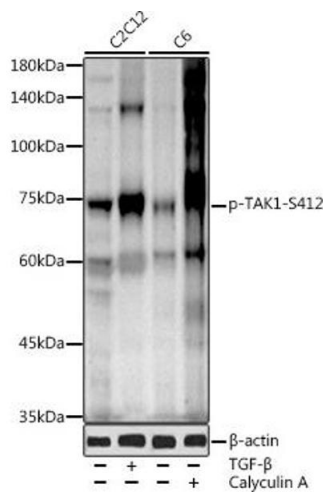
Western Blotting

Image 1. Western blot analysis of extracts of various cell lines, using Phospho-T-S412 Rabbit pAb (ABIN3019511, ABIN3019512, ABIN3019513 and ABIN6225441) at 1:1000 dilution. 293 cells were treated by Calyculin A (100 nM) at 37 °C for 30 minutes after serum-starvation overnight. K-562 cells were treated by 10 % FBS at 37 °C for 30 minutes after serum-starvation overnight. Secondary antibody: HRP Goat Anti-Rabbit IgG (H+L) (ABIN1684268 and ABIN3020597) at 1:10000 dilution. Lysates/proteins: 25 µg per lane. Blocking buffer: 3 % BSA. Detection: ECL Basic Kit (RM00020).



Western Blotting

Image 2. Western blot analysis of extracts of K562 cells, using Phospho-MAP3K7-S439 antibody.



Western Blotting

Image 3. Western blot analysis of extracts of various cell lines, using Phospho-T-S412 antibody (ABIN3019511, ABIN3019512, ABIN3019513 and ABIN6225441) at 1:1000 dilution. C2C12 cells were treated by TGF- β (10 ng/mL) at 37 °C for 30 minutes. C6 cells were treated by Calyculin A (100 nM) at 37 °C for 30 minutes after serum-starvation overnight. Secondary antibody: HRP Goat Anti-Rabbit IgG (H+L) (ABIN1684268 and ABIN3020597) at 1:10000 dilution. Lysates/proteins: 25 μ g per lane. Blocking buffer: 3 % nonfat dry milk in TBST. Detection: ECL Enhanced Kit (RM00021). Exposure time: 120s.