

Datasheet for ABIN3019554  
**anti-SMC1A antibody (pSer957)**[Go to Product page](#)

## 7 Images

## Overview

Quantity:	100 µL
Target:	SMC1A
Binding Specificity:	pSer957
Reactivity:	Human
Host:	Rabbit
Clonality:	Polyclonal
Conjugate:	This SMC1A antibody is un-conjugated
Application:	Western Blotting (WB), Immunohistochemistry (IHC), Immunoprecipitation (IP)

## Product Details

Immunogen:	A synthetic phosphorylated peptide around S957 of human SMC1A (NP_006297.2).
Sequence:	GSSQG
Isotype:	IgG
Cross-Reactivity:	Human, Mouse, Rat
Characteristics:	Phosphorylated Antibodies

## Target Details

Target:	SMC1A
Alternative Name:	SMC1A ( <a href="#">SMC1A Products</a> )
Background:	Proper cohesion of sister chromatids is a prerequisite for the correct segregation of

## Target Details

chromosomes during cell division. The cohesin multiprotein complex is required for sister chromatid cohesion. This complex is composed partly of two structural maintenance of chromosomes (SMC) proteins, SMC3 and either SMC1B or the protein encoded by this gene. Most of the cohesin complexes dissociate from the chromosomes before mitosis, although those complexes at the kinetochore remain. Therefore, the encoded protein is thought to be an important part of functional kinetochores. In addition, this protein interacts with BRCA1 and is phosphorylated by ATM, indicating a potential role for this protein in DNA repair. This gene, which belongs to the SMC gene family, is located in an area of the X-chromosome that escapes X inactivation. Mutations in this gene result in Cornelia de Lange syndrome. Alternative splicing results in multiple transcript variants encoding different isoforms.,SMC1A,CDLS2,DXS423E,SB1.8,SMC1,SMC1L1,SMC1alpha,SMCB,Epigenetics & Nuclear Signaling,Cell Biology & Developmental Biology,Apoptosis,Cell Cycle,Protein phosphorylation,SMC1A

Molecular Weight: 143 kDa

Gene ID: 8243

UniProt: [Q14683](#)

Pathways: [Stem Cell Maintenance](#)

## Application Details

Application Notes: WB,1:500 - 1:2000,IHC,1:50 - 1:200,IP,1:50 - 1:100

Restrictions: For Research Use only

## Handling

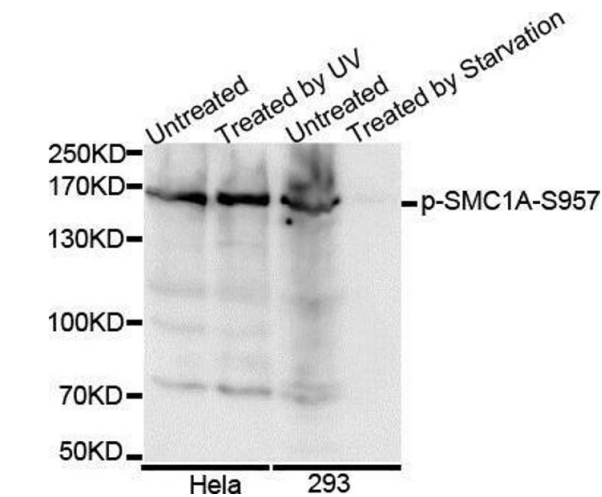
Buffer: PBS with 0.02 % sodium azide,50 % glycerol, pH 7.3.

Preservative: Sodium azide

Precaution of Use: This product contains Sodium azide: a POISONOUS AND HAZARDOUS SUBSTANCE which should be handled by trained staff only.

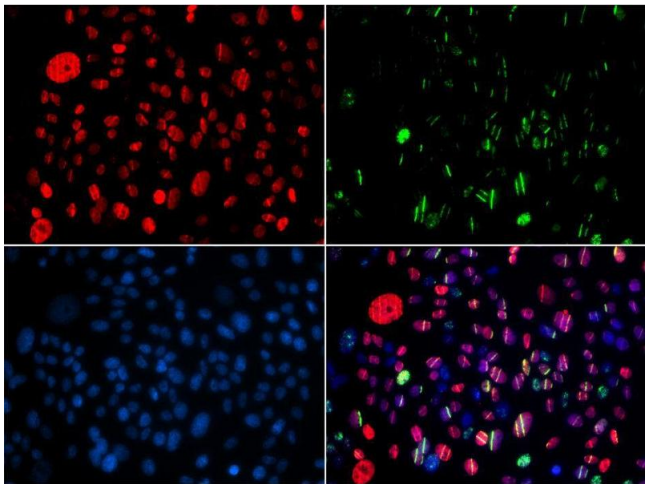
Storage: -20 °C

Storage Comment: Store at -20°C. Avoid freeze / thaw cycles.



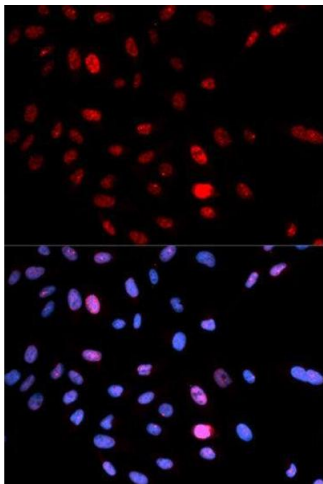
Western Blotting

Image 1.



Immunofluorescence

Image 2.



Immunofluorescence

Image 3.

Please check the [product details page](#) for more images. Overall 7 images are available for ABIN3019554.