



[Go to Product page](#)

Datasheet for ABIN3019959
anti-PKC theta antibody (pSer676)

3 Images

Overview

Quantity:	100 µL
Target:	PKC theta (PRKCQ)
Binding Specificity:	pSer676
Reactivity:	Human
Host:	Rabbit
Clonality:	Polyclonal
Conjugate:	This PKC theta antibody is un-conjugated
Application:	Western Blotting (WB), Immunohistochemistry (IHC), Immunofluorescence (IF)

Product Details

Immunogen:	Synthetic peptide
Cross-Reactivity:	Mouse (Murine), Rat (Rattus)

Target Details

Target:	PKC theta (PRKCQ)
Alternative Name:	PRKCQ (PRKCQ Products)
Molecular Weight:	706 kDa
Gene ID:	5588
UniProt:	Q04759
Pathways:	TCR Signaling , Fc-epsilon Receptor Signaling Pathway , Myometrial Relaxation and Contraction ,

Target Details

Regulation of G-Protein Coupled Receptor Protein Signaling, Thromboxane A2 Receptor Signaling

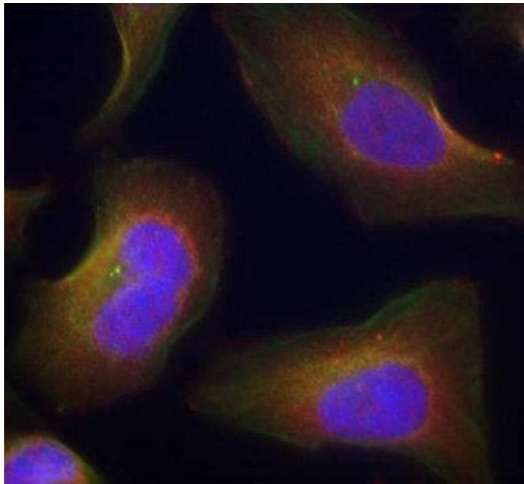
Application Details

Restrictions: For Research Use only

Handling

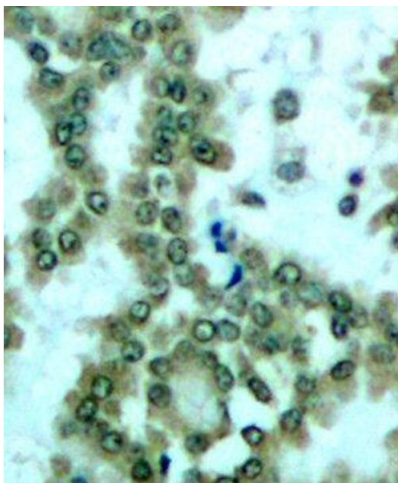
Storage: -20 °C

Images



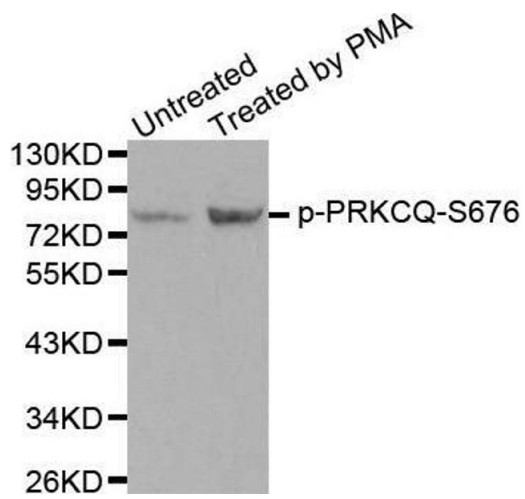
Immunofluorescence

Image 1. Immunofluorescence staining of methanol-fixed HeLa cells using Phospho-PRKCQ-S676 antibody.



Immunohistochemistry

Image 2.



Western Blotting

Image 3. Western blot analysis of extracts from PC12 cells using Phospho-PRKCQ-S676 antibody.