

Datasheet for ABIN301998  
**anti-HLA-DP/DR antibody (Biotin)**



[Go to Product page](#)

2 Images

1 Publication

## Overview

Quantity:	0.1 mg
Target:	HLA-DP/DR
Reactivity:	Human
Host:	Mouse
Clonality:	Monoclonal
Conjugate:	This HLA-DP/DR antibody is conjugated to Biotin
Application:	Flow Cytometry (FACS), Immunoprecipitation (IP), Western Blotting (WB), Immunohistochemistry (Paraffin-embedded Sections) (IHC (p))

## Product Details

Immunogen:	PHA-activated peripheral blood lymphocytes.
Clone:	MEM-136
Isotype:	IgG1
Specificity:	The antibody MEM-136 recognizes a common extracellular epitope on beta-chain of human HLA-DR and HLA-DP. It reacts with alpha/beta dimer as well as with dissociated beta-subunit. DR and DP are the isotypes of human MHC Class II molecules expressed on antigen-presenting cells (APC, dendritic cells, B lymphocytes, monocytes, macrophages).
Cross-Reactivity (Details):	Human
Purification:	Purified antibody is conjugated with biotin LC-NHS ester under optimum conditions and unconjugated antibody and free biotin are removed by size-exclusion chromatography.

## Target Details

---

Target:	HLA-DP/DR
Alternative Name:	HLA-DR+DP ( <a href="#">HLA-DP/DR Products</a> )

## Application Details

---

Application Notes:	Flow cytometry: Recommended dilution: 1 µg/mL.
Comment:	The purified antibody is conjugated with Biotin-LC-NHS under optimum conditions. The reagent is free of unconjugated biotin.
Restrictions:	For Research Use only

## Handling

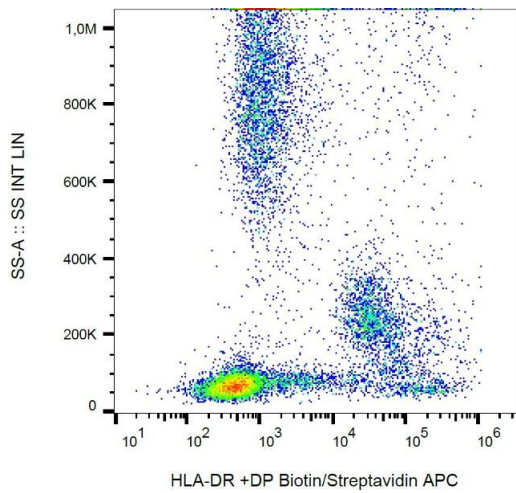
---

Concentration:	1 mg/mL
Buffer:	Phosphate buffered saline (PBS), pH 7.4, 15 mM sodium azide
Preservative:	Sodium azide
Precaution of Use:	This product contains Sodium azide: a POISONOUS AND HAZARDOUS SUBSTANCE which should be handled by trained staff only.
Handling Advice:	<b>Do not freeze.</b> Avoid prolonged exposure to light.
Storage:	4 °C
Storage Comment:	Store at 2-8°C. Do not freeze.

## Publications

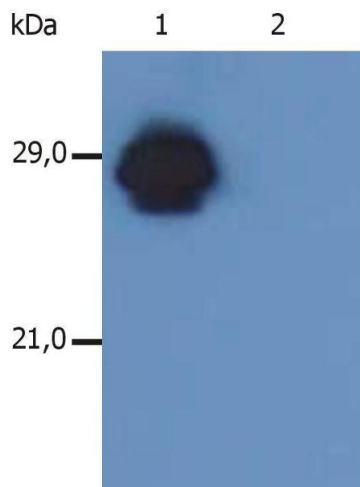
---

Product cited in:	Koch, Staffler, Hüttinger, Hilgert, Prager, Cerný, Steinlein, Majdic, Horejsí, Stockinger: "T cell activation-associated epitopes of CD147 in regulation of the T cell response, and their definition by antibody affinity and antigen density." in: <b>International immunology</b> , Vol. 11, Issue 5, pp. 777-86, (1999) ( <a href="#">PubMed</a> ).
-------------------	---



### Flow Cytometry

**Image 1.** Flow cytometry analysis (surface staining) of human peripheral blood with anti-human HLA-DR+DP (MEM-136) biotin.



### Western Blotting

**Image 2.** Western Blotting analysis of MHC Class II in whole cell lysate of RAJI human Burkitt lymphoma cell line using anti-human HLA-DR+DP (MEM-136). The antibody recognizes  $\beta$ -chain of HLA-DR antigen under non-reducing conditions. Lane 1: immunostaining with anti-human HLA-DR+DP () Lane 2: immunostaining with Isotype mouse IgG1 control (PPV-06; 11-457-C100)