

Datasheet for ABIN302015

Mouse anti-Human IgG Fc (Fc Region) Antibody (FITC)**4** Images[Go to Product page](#)

Overview

Quantity:	0.1 mg
Target:	IgG Fc
Binding Specificity:	Fc Region
Reactivity:	Human
Host:	Mouse
Clonality:	Monoclonal
Conjugate:	FITC
Application:	Flow Cytometry (FACS)

Product Details

Immunogen:	Fusion protein of human IgG Fc fragment.
Clone:	EM-07
Isotype:	IgG1
Specificity:	The mouse monoclonal antibody EM-07 reacts with Fc part of human IgG heavy chain and with isolated Fc fragments.
Cross-Reactivity (Details):	Human, Other not determined
Purification:	Purified antibody is conjugated with fluorescein isothiocyanate (FITC) under optimum conditions and unconjugated antibody and free fluorochrome are removed by size-exclusion chromatography.

Target Details

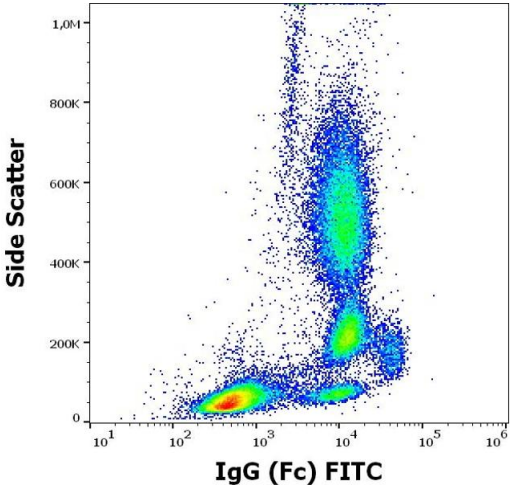
Target:	IgG Fc
Alternative Name:	IgG (Fc)
Target Type:	Antibody
Background:	Immunoglobulin G (IgG) is a 150 kDa soluble protein that serves as a major effector molecule of the humoral immune response in man. Its concentration in blood plasma of healthy individuals is approximately 10 g/l, which accounts for about 75 % of the total plasma immunoglobulins. IgG has the highest stability of blood immunoglobulins (T1/2 = 21 days) and is able of placental transfer. IgG is secreted by plasma cells at a comparably high rate as other immunoglobulins.,Immunoglobulin G Fc fragment
Molecular Weight:	150 kDa

Application Details

Application Notes:	Flow cytometry: Recommended dilution: 1-4 µg/mL.
Comment:	The purified antibody is conjugated with Fluorescein isothiocyanate (FITC) under optimum conditions. The reagent is free of unconjugated FITC.
Restrictions:	For Research Use only

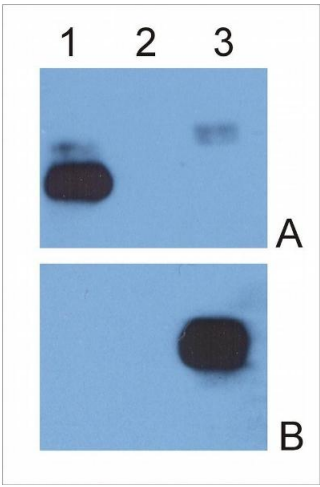
Handling

Format:	Liquid
Concentration:	0.1 mg/mL
Buffer:	Stabilizing phosphate buffered saline (PBS), pH 7.4, 15 mM sodium azide
Preservative:	Sodium azide
Precaution of Use:	This product contains Sodium azide: a POISONOUS AND HAZARDOUS SUBSTANCE which should be handled by trained staff only.
Handling Advice:	Do not freeze. Avoid prolonged exposure to light.
Storage:	4 °C
Storage Comment:	Store at 2-8°C. Protect from prolonged exposure to light. Do not freeze.



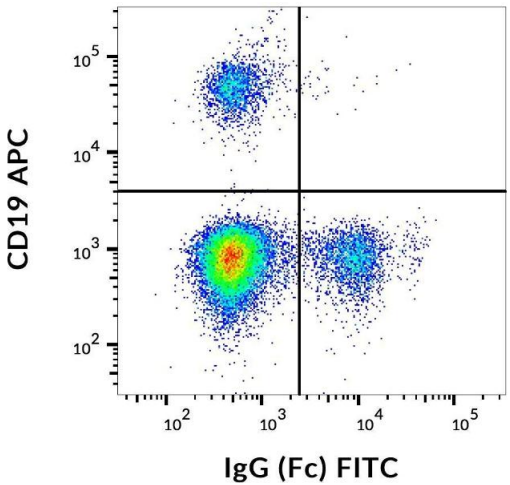
Flow Cytometry

Image 1. Flow cytometry surface staining pattern of human peripheral whole blood stained using anti-human IgG (Fc) (EM-07) FITC antibody (3 µL reagent / 100 µL of peripheral whole blood).



Western Blotting

Image 2. IgG κ light chain (1), IgG λ light chain (2) and IgG Fc fragment (3) purified from human serum were analysed by Western blotting with MEM-09 antibody against IgG κ light chain (A) and EM-07 antibody against IgG Fc fragment (B).



Flow Cytometry

Image 3. Flow cytometry analysis (surface staining) of human peripheral blood using anti-IgG (Fc), clone EM-07, FITC.

Please check the [product details page](#) for more images. Overall 4 images are available for ABIN302015.