

Datasheet for ABIN302031

**anti-LIME antibody (AA 141-295) (PE)****1** Image**1** Publication[Go to Product page](#)

## Overview

Quantity:	0.1 mg
Target:	LIME (LIME1)
Binding Specificity:	AA 141-295
Reactivity:	Human
Host:	Mouse
Clonality:	Monoclonal
Conjugate:	This LIME antibody is conjugated to PE
Application:	Flow Cytometry (FACS)

## Product Details

Immunogen:	Bacterially expressed intracellular fragment corresponding to aa 141-295 of human LIME.
Clone:	LIME-06
Isotype:	IgG1
Specificity:	The antibody LIME-06 was raised against intracellular fragment corresponding to aa 141-295 of human LIME, a 30 kDa Lck-interacting transmembrane adaptor expressed by T cells.
Cross-Reactivity (Details):	Human
Purification:	Purified antibody is conjugated with R-phycoerythrin (PE) under optimum conditions. Unconjugated antibody and free fluorochrome are removed by size-exclusion chromatography.

## Target Details

Target:	LIME (LIME1)
Alternative Name:	LIME ( <a href="#">LIME1 Products</a> )
Background:	Lck interacting transmembrane adaptor 1,LIME (Lck-interacting molecule) is a 30 kDa double-palmitoylated protein with unusually basic cytoplasmic domain, expressed by T cells. After ligation of CD4 or CD8 T cell coreceptors, LIME is phosphorylated by Src-family kinases and associates with Lck and Fyn kinases and with their negative regulator Csk. Interestingly, Csk-mediated phosphorylation of C-terminal negative-regulatory tyrosine of LIME-associated Lck can result in increase of enzymatic activity compared with the total pool of Lck, thus, LIME serves as a positive regulator of TCR-dependent T cell signaling. However, under some circumstances, LIME may mediate inhibitory signals.,LITA1
Gene ID:	54923
UniProt:	<a href="#">Q9H400</a>

## Application Details

Application Notes:	Flow cytometry: Recommended dilution: 1-5 µg/mL. Intracellular staining.
Comment:	The purified antibody is conjugated with R-Phycoerythrin (PE) under optimum conditions. The conjugate is purified by size-exclusion chromatography and adjusted for direct use. No reconstitution is necessary.
Restrictions:	For Research Use only

## Handling

Reconstitution:	No reconstitution is necessary.
Concentration:	0.1 mg/mL
Buffer:	Stabilizing phosphate buffered saline (PBS), pH 7.4, 15 mM sodium azide
Preservative:	Sodium azide
Precaution of Use:	This product contains Sodium azide: a POISONOUS AND HAZARDOUS SUBSTANCE which should be handled by trained staff only.
Handling Advice:	<b>Do not freeze.</b> Avoid prolonged exposure to light.
Storage:	4 °C

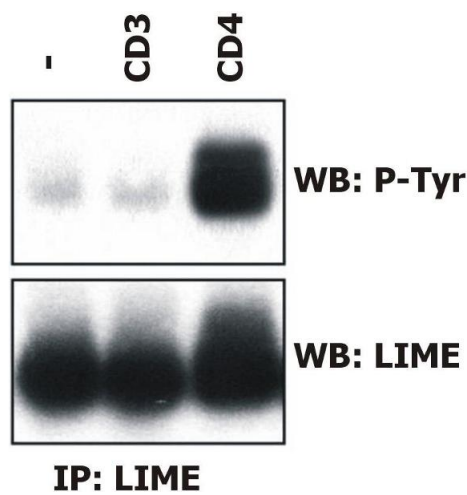
Handling

Storage Comment: Store at 2-8°C. Protect from prolonged exposure to light. Do not freeze.

Publications

Product cited in: Brdicková, Brdicka, Angelisová, Horváth, Spicka, Hilgert, Paces, Simeoni, Kliche, Merten, Schraven, Horejsí: "LIME: a new membrane Raft-associated adaptor protein involved in CD4 and CD8 coreceptor signaling." in: **The Journal of experimental medicine**, Vol. 198, Issue 10, pp. 1453-62, (2003) ([PubMed](#)).

Images



**Western Blotting**

**Image 1.** Induction of LIME tyrosine phosphorylation. Peripheral blood T cells were left unstimulated (-) or stimulated with anti-human CD3 (MEM-92