



[Go to Product page](#)

Datasheet for ABIN302033
anti-HLA-DR1 antibody (PE)

4 Images

Overview

Quantity:	0.1 mg
Target:	HLA-DR1
Reactivity:	Human
Host:	Mouse
Clonality:	Monoclonal
Conjugate:	This HLA-DR1 antibody is conjugated to PE
Application:	Flow Cytometry (FACS)

Product Details

Immunogen:	Purified, insoluble DR1 beta chain (DRB1*0101) expressed in E. coli inclusion bodies.
Clone:	MEM-267
Isotype:	IgG2b
Specificity:	The antibody MEM-267 specifically binds extracellularly to the empty but not peptide-loaded form of HLA-DR1. DR is the isotypes of human MHC Class II molecules expressed on antigen-presenting cells (APC, dendritic cells, B lymphocytes, monocytes, macrophages).
Cross-Reactivity (Details):	Human
Purification:	Purified antibody is conjugated with R-phycoerythrin (PE) under optimum conditions. Unconjugated antibody and free fluorochrome are removed by size-exclusion chromatography.

Target Details

Target:	HLA-DR1
---------	---------

Target Details

Alternative Name: HLA-DR1 ([HLA-DR1 Products](#))

Background: HLA-DR1 belongs to the HLA class II beta chain paralogues. The MHC Class II molecule is a heterodimer consisting of an alpha (DRA) and a beta chain (DRB), both anchored in the membrane. It plays a central role in the immune system by presenting peptides derived from extracellular proteins. MHC Class II molecules are expressed in antigen presenting cells (APC). The beta chain is approximately 26-28 kDa. Within the DR molecule the beta chain contains all the polymorphisms specifying the peptide binding specificities. Hundreds of DRB1 alleles have been described and typing for these polymorphisms is routinely done for bone marrow and kidney transplantation.

Application Details

Application Notes: Flow cytometry: The antibody MEM-267 stains immature dendritic cells that express empty cell surface MHC molecules, but not cells that express predominantly peptide loaded forms.
Recommended dilution: 1-5 µg/mL.

Comment: The purified antibody is conjugated with R-Phycoerythrin (PE) under optimum conditions. The conjugate is purified by size-exclusion chromatography.

Restrictions: For Research Use only

Handling

Concentration: 0.1 mg/mL

Buffer: Stabilizing phosphate buffered saline (PBS), pH 7.4, 15 mM sodium azide

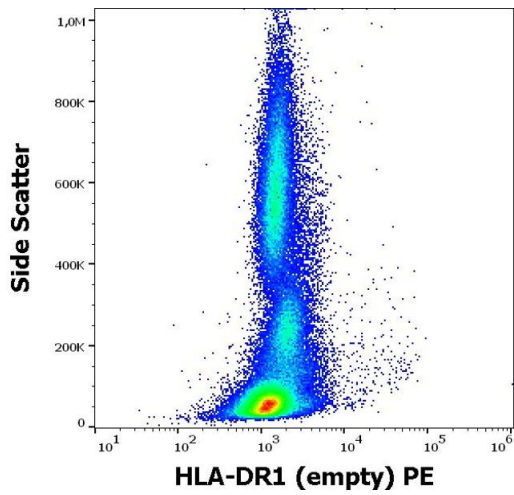
Preservative: Sodium azide

Precaution of Use: This product contains Sodium azide: a POISONOUS AND HAZARDOUS SUBSTANCE which should be handled by trained staff only.

Handling Advice: **Do not freeze.**
Avoid prolonged exposure to light.

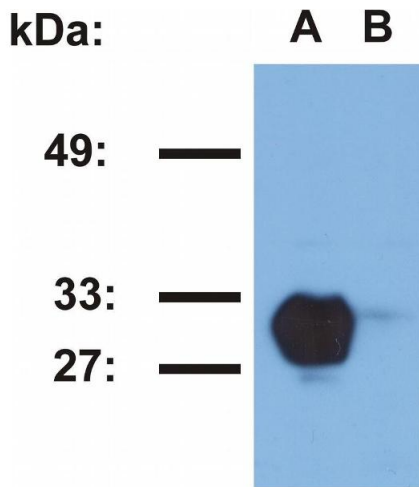
Storage: 4 °C

Storage Comment: Store at 2-8°C. Protect from prolonged exposure to light. Do not freeze.



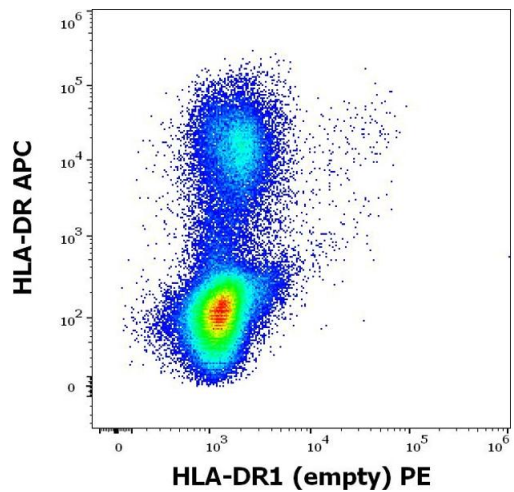
Flow Cytometry

Image 1. Flow cytometry surface staining pattern of human peripheral whole blood stained using anti-human HLA-DR1-empty (MEM-267) PE antibody (concentration in sample 9 μ g/mL).



Western Blotting

Image 2. Western blotting analysis of HLA-DR1 in Raji (A) and Jurkat (B) cell lines using MEM-267 antibody.



Flow Cytometry

Image 3. Flow cytometry multicolor surface staining pattern of human peripheral whole blood stained using anti-human HLA-DR1-empty (MEM-267) PE antibody (concentration in sample 9 μ g/mL) and anti-human HLA-DR (L243) APC antibody (10 μ L reagent / 100 μ L of peripheral whole blood).

Please check the [product details page](#) for more images. Overall 4 images are available for ABIN302033.