

Datasheet for ABIN3020538
anti-GAPDH antibody (AA 1-335)[Go to Product page](#)

12 Images

13 Publications

Overview

| | |
|----------------------|--|
| Quantity: | 100 µL |
| Target: | GAPDH |
| Binding Specificity: | AA 1-335 |
| Reactivity: | Human |
| Host: | Rabbit |
| Clonality: | Polyclonal |
| Conjugate: | This GAPDH antibody is un-conjugated |
| Application: | Western Blotting (WB), Immunohistochemistry (IHC), Immunofluorescence (IF), Immunoprecipitation (IP) |

Product Details

| | |
|-------------------|---|
| Immunogen: | Recombinant fusion protein containing a sequence corresponding to amino acids 1-335 of human GAPDH (NP_002037.2). |
| Sequence: | MGKVKVG VNG FGRIGRLVTR AAFNSGKVDI VAINDPFIDL NYMVYMFQYD STHGKFHGTV KAENGKLVIN GNPITIFQER DPSKIKWGDA GAEYVVESTG VFTTMEKAGA HLQGGA KRVI ISAPSADAPM FVMGVNHEKY DNSLKIISNA SCTTNCLAPL AKVIHDNFGI VEGMLTTVHA ITATQKTVDG PSGKLWRDGR GALQNIIPAS TGAAKAVGKV IPELNGKLTG MAFRVPTANV SVVDLTCRLE KPAKYDDIKK VVKQASEGPL KGILGYTEHQ VVSSDFNSDT HSSTFDAGAG IALNDHFVKL ISWYDNEFGY SNRVVDLMAH MASKE |
| Isotype: | IgG |
| Cross-Reactivity: | Human, Mouse, Rat |

Product Details

Characteristics: Loading control Antibodies

Purification: Affinity purification

Target Details

Target: GAPDH

Alternative Name: GAPDH ([GAPDH Products](#))

Background: This gene encodes a member of the glyceraldehyde-3-phosphate dehydrogenase protein family. The encoded protein has been identified as a moonlighting protein based on its ability to perform mechanistically distinct functions. The product of this gene catalyzes an important energy-yielding step in carbohydrate metabolism, the reversible oxidative phosphorylation of glyceraldehyde-3-phosphate in the presence of inorganic phosphate and nicotinamide adenine dinucleotide (NAD). The encoded protein has additionally been identified to have uracil DNA glycosylase activity in the nucleus. Also, this protein contains a peptide that has antimicrobial activity against *E. coli*, *P. aeruginosa*, and *C. albicans*. Studies of a similar protein in mouse have assigned a variety of additional functions including nitrosylation of nuclear proteins, the regulation of mRNA stability, and acting as a transferrin receptor on the cell surface of macrophage. Many pseudogenes similar to this locus are present in the human genome. Alternative splicing results in multiple transcript variants.,G3PD,GAPD,HEL-S-162eP,GAPDH,Cancer,Signal Transduction,Endocrine & Metabolism,Carbohydrate metabolism,Neuroscience,Neurodegenerative Diseases,Amyloid Plaque and Neurofibrillary Tangle Formation in Alzheimer's Disease,GAPDH

Molecular Weight: 31 kDa/36 kDa

Gene ID: 2597

UniProt: [P04406](#)

Application Details

Application Notes: WB,1:1000 - 1:10000,IHC,1:50 - 1:100,IF,1:20 - 1:50,IP,1:20 - 1:50

Restrictions: For Research Use only

Handling

Format: Liquid

Buffer: PBS with 0.02 % sodium azide,50 % glycerol, pH 7.3.

Handling

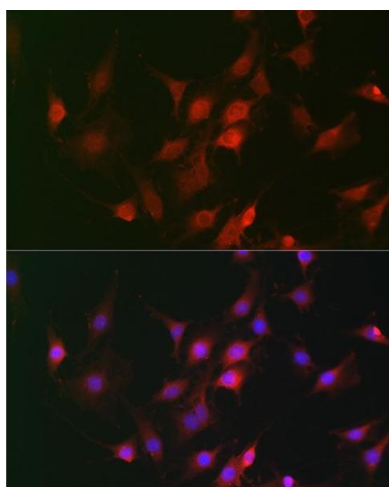
| | |
|--------------------|--|
| Preservative: | Sodium azide |
| Precaution of Use: | This product contains Sodium azide: a POISONOUS AND HAZARDOUS SUBSTANCE which should be handled by trained staff only. |
| Handling Advice: | Avoid freeze / thaw cycles |
| Storage: | -20 °C |
| Storage Comment: | Store at -20°C. Avoid freeze / thaw cycles. |

Publications

Product cited in: Sun, Ji, Guo, Liu, Wang, Ma, Hu, Wang, Jiang: "Early adventitial activation characterized by NADPH oxidase expression and neovascularization in an aortic transplantation model." in: **Experimental and molecular pathology**, Vol. 100, Issue 1, pp. 67-73, (2016) ([PubMed](#)).

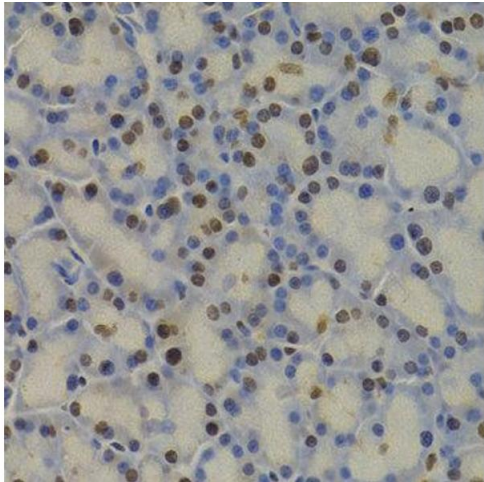
There are more publications referencing this product on: [Product page](#)

Validation report #104427 for Immunohistochemistry (IHC)



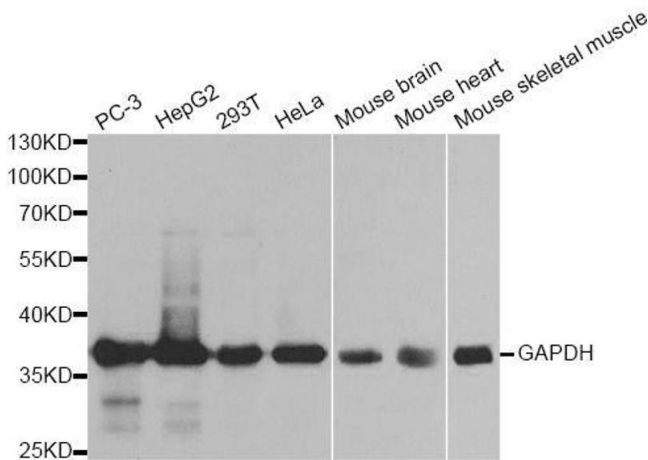
Immunohistochemistry

Image 1. Immunohistochemistry of paraffin-embedded mouse lung using GAPDH Rabbit pAb (ABIN3020537, ABIN3020538 and ABIN3020539) at dilution of 1:100 (40x lens). Perform high pressure antigen retrieval with 10 mM citrate buffer pH 6.0 before commencing with IHC staining protocol.



Immunohistochemistry

Image 2.



Western Blotting

Image 3. Western blot analysis of extracts of various cell lines, using GAPDH antibody.

Please check the [product details page](#) for more images. Overall 12 images are available for ABIN3020538.