



[Go to Product page](#)

Datasheet for ABIN302069

anti-LAT antibody (Cytoplasmic Domain)

5 Images

2 Publications

Overview

Quantity:	0.1 mg
Target:	LAT
Binding Specificity:	Cytoplasmic Domain
Reactivity:	Human
Host:	Mouse
Clonality:	Monoclonal
Conjugate:	This LAT antibody is un-conjugated
Application:	Western Blotting (WB), Immunoprecipitation (IP), Flow Cytometry (FACS)

Product Details

Immunogen:	Bacterially produced recombinant polypeptide corresponding to the entire cytoplasmic domain of human LAT.
Clone:	LAT-01
Isotype:	IgG1
Specificity:	The antibody LAT-01 reacts with an intracellular epitope of LAT, a 36-38 kDa transmembrane adaptor protein expressed by T cells, pre-B cells, NK cells, mast cells and platelets.
No Cross-Reactivity:	Mouse
Cross-Reactivity (Details):	Human
Purification:	Purified by protein-A affinity chromatography.
Purity:	> 95 % (by SDS-PAGE)

Target Details

Target:	LAT
Alternative Name:	LAT (LAT Products)
Background:	Linker for activation of T cells,LAT (linker for activation of T cells) is a 36-38 kDa double-palmitoylated transmembrane adaptor protein expressed by T cells, pre-B cells, NK cells, mast cells and platelets. After immunoreceptor triggering, LAT becomes multiply tyrosine-phosphorylated by Syk-, Src-, or Tec-family kinases, providing docking sites for downstream signaling molecules. LAT is essential for TCR-dependent T cell- and FcepsilonRI-dependent mast cell activation, as well as for maturation of early thymocytes. It is also involved in NK cell signaling and platelet activation.,IMD52
Gene ID:	27040
UniProt:	O43561
Pathways:	TCR Signaling , Fc-epsilon Receptor Signaling Pathway

Application Details

Application Notes:	Immunoprecipitation: Tyrosine-phosphorylated form of LAT is not optimally recognized. Flow cytometry: Recommended dilution: 1-4 µg/mL, intracellular staining. Tyrosine-phosphorylated form of LAT is not optimally recognized. Western blotting: Recommended dilution: 1-2 µg/mL.
--------------------	--

Restrictions:	For Research Use only
---------------	-----------------------

Handling

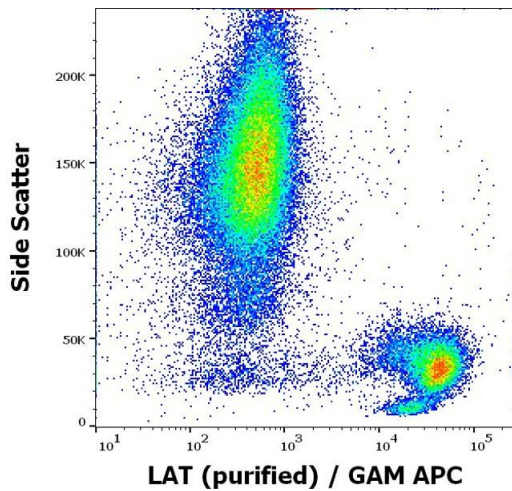
Concentration:	1 mg/mL
Buffer:	Phosphate buffered saline (PBS), pH 7.4, 15 mM sodium azide
Preservative:	Sodium azide
Precaution of Use:	This product contains Sodium azide: a POISONOUS AND HAZARDOUS SUBSTANCE which should be handled by trained staff only.
Handling Advice:	Do not freeze.
Storage:	4 °C
Storage Comment:	Store at 2-8°C. Do not freeze.

Product cited in:

Hrdinka, Dráber, Stepánek, Ormsby, Otáhal, Angelisová, Brdicka, Paces, Horejsí, Drbal: "PRR7 is a transmembrane adaptor protein expressed in activated T cells involved in regulation of T cell receptor signaling and apoptosis." in: **The Journal of biological chemistry**, Vol. 286, Issue 22, pp. 19617-29, (2011) ([PubMed](#)).

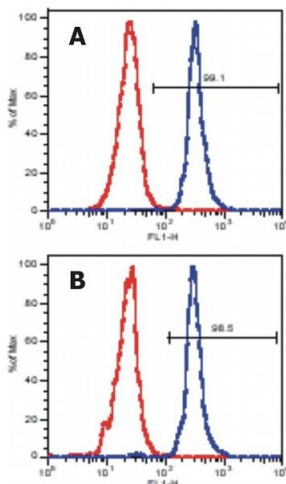
Tedoldi, Paterson, Hansmann, Natkunam, Rüdiger, Angelisova, Du, Robertson, Roncador, Sanchez, Pozzobon, Masir, Barry, Pileri, Mason, Marafioti, Horejsí: "Transmembrane adaptor molecules: a new category of lymphoid-cell markers." in: **Blood**, Vol. 107, Issue 1, pp. 213-21, (2005) ([PubMed](#)).

Images



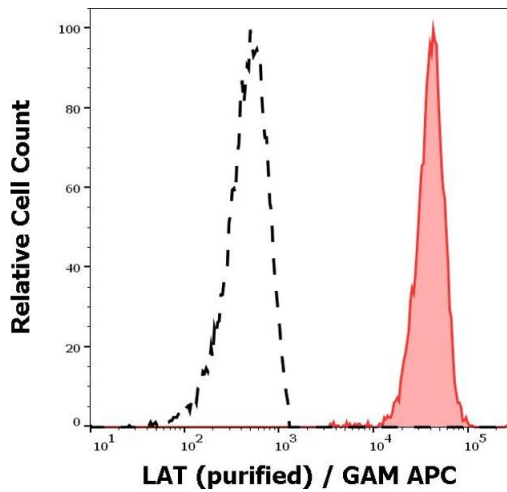
Flow Cytometry

Image 1. Flow cytometry intracellular staining pattern of human peripheral whole blood using anti-LAT (LAT-01) purified antibody (concentration in sample 1 µg/mL, GAM APC).



Flow Cytometry

Image 2. Flow Cytometry analysis of LAT expression in peripheral blood lymphocytes using anti-human LAT (LAT-01) (surface markers were stained prior to intracellular staining of human LAT). Panel A: gate on CD4+ cells Panel B: gate on CD8+ cells



Flow Cytometry

Image 3. Separation of human CD3 positive LAT positive lymphocytes (red-filled) from neutrophil granulocytes (black-dashed) in flow cytometry analysis (intracellular staining) of peripheral whole blood stained using anti-LAT (LAT-01) purified antibody (concentration in sample 1 µg/mL, GAM APC).

Please check the [product details page](#) for more images. Overall 5 images are available for ABIN302069.