



[Go to Product page](#)

Datasheet for ABIN3020691

## anti-BMI1 antibody (AA 120-326)

10 Images

### Overview

Quantity:	100 µL
Target:	BMI1
Binding Specificity:	AA 120-326
Reactivity:	Human
Host:	Rabbit
Clonality:	Polyclonal
Application:	Western Blotting (WB), Immunoprecipitation (IP)

### Product Details

Immunogen:	Recombinant fusion protein containing a sequence corresponding to amino acids 120-326 of human Bmi1 (NP_005171.4).
Sequence:	EDKRIITDDE IISLSIEFFD QNRLDRKVNK DKEKSKEEVN DKRYLRCPAA MTVMHLRKFL RSKMDIPNTF QIDVMYEEEP LKDYITLMDI AYIYTWRNG PLPLKYRVRP TCKRMKISHQ RDGLTNAGEL ESDSGSDKAN SPAGGIPSTS SCLPSPSTPV QSPHPQFPHI SSTMNGTSNS PSGNHQSSFA NRPRKSSVNG SSATSSG
Isotype:	IgG
Cross-Reactivity:	Human, Mouse, Rat
Characteristics:	Polyclonal Antibodies
Purification:	Affinity purification

## Target Details

---

Target:	BMI1
Alternative Name:	BMI1 ( <a href="#">BMI1 Products</a> )
Background:	<p>This gene encodes a ring finger protein that is major component of the polycomb group complex 1 (PRC1). This complex functions through chromatin remodeling as an essential epigenetic repressor of multiple regulatory genes involved in embryonic development and self-renewal in somatic stem cells. This protein also plays a central role in DNA damage repair. This gene is an oncogene and aberrant expression is associated with numerous cancers and is associated with resistance to certain chemotherapies. A pseudogene of this gene is found on chromosome X. Read-through transcription also exists between this gene and the upstream COMM domain containing 3 (COMMD3) gene.,BMI1,FLV12/BMI1,PCGF4,RNF51,flvi-2/bmi-1,Bmi1,Epigenetics &amp; Nuclear Signaling,Cell Biology &amp; Developmental Biology,Cell Cycle,G1/S Checkpoint,BMI1</p>
Molecular Weight:	36 kDa
Gene ID:	648
UniProt:	<a href="#">P35226</a>
Pathways:	<a href="#">Cell Division Cycle</a> , <a href="#">Autophagy</a>

## Application Details

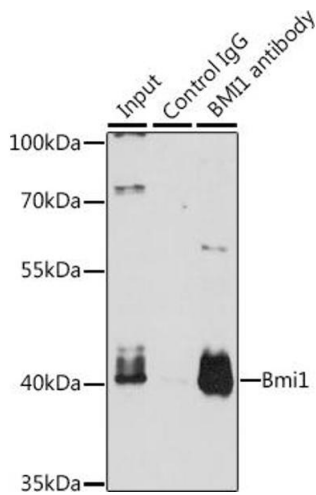
---

Application Notes:	WB,1:500 - 1:2000,IP,1:50 - 1:100
Restrictions:	For Research Use only

## Handling

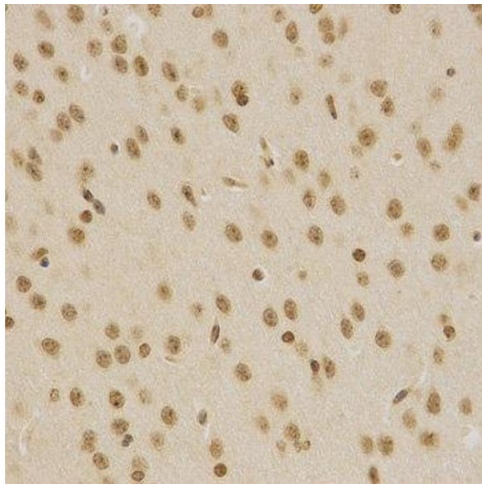
---

Format:	Liquid
Buffer:	PBS with 0.02 % sodium azide,50 % glycerol, pH 7.3.
Preservative:	Sodium azide
Precaution of Use:	This product contains Sodium azide: a POISONOUS AND HAZARDOUS SUBSTANCE which should be handled by trained staff only.
Handling Advice:	Avoid freeze / thaw cycles
Storage:	-20 °C
Storage Comment:	Store at -20°C. Avoid freeze / thaw cycles.



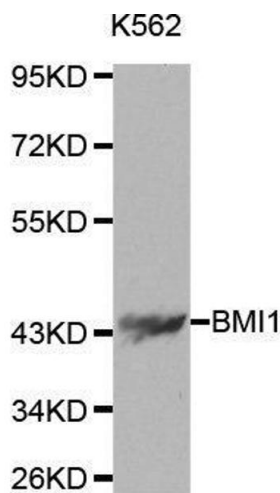
### Immunoprecipitation

**Image 1.** Immunoprecipitation analysis of 200 µg extracts of K-562 cells, using 3 µg Bmi1 antibody (ABIN3020690, ABIN3020691, ABIN3020692 and ABIN6213671). Western blot was performed from the immunoprecipitate using Bmi1 antibody (ABIN3020690, ABIN3020691, ABIN3020692 and ABIN6213671) at a dilution of 1:1000.



### Immunohistochemistry

**Image 2.** Immunohistochemistry of paraffin-embedded mouse brain using BMI1 antibody at dilution of 1:200 (x400 lens).



### Western Blotting

**Image 3.** Western blot analysis of extracts of K562 cells using BMI1 antibody.

Please check the [product details page](#) for more images. Overall 10 images are available for ABIN3020691.