



[Go to Product page](#)

Datasheet for ABIN3020716
anti-CRP antibody (AA 1-224)

6 Images

Overview

Quantity:	100 µL
Target:	CRP
Binding Specificity:	AA 1-224
Reactivity:	Human
Host:	Rabbit
Clonality:	Polyclonal
Application:	Western Blotting (WB), Immunofluorescence (IF)

Product Details

Immunogen:	Recombinant fusion protein containing a sequence corresponding to amino acids 1-224 of human C-Reactive Protein (C-Reactive Protein (CRP)) (NP_000558.2).
Sequence:	MEKLLCFLVL TSLSHAFGQT DMSRKAFVFP KESDTSYVSL KAPLTKPLKA FTVCLHFYTE LSSTRGYSIF SYATKRQDNE ILIFWSKDIG YSFTVGGSEI LFEVPEVTVV PVHICTSWES ASGIVEFWVD GKPRVRKSLK KGYTVGAEAS IILGQEQDSF GGNFEGSQSL VGDIGNVNMW DFVLSPEIN TIYLGPFSP NVLNRWALKY EVQGEVFTKP QLWP
Isotype:	IgG
Cross-Reactivity:	Human, Mouse, Rat
Characteristics:	Polyclonal Antibodies
Purification:	Affinity purification

Target Details

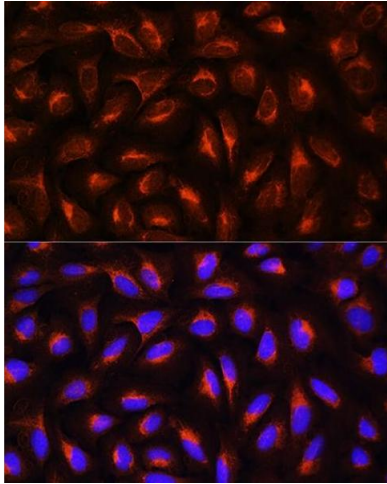
Target:	CRP
Alternative Name:	CRP (CRP Products)
Background:	<p>The protein encoded by this gene belongs to the pentaxin family. It is involved in several host defense related functions based on its ability to recognize foreign pathogens and damaged cells of the host and to initiate their elimination by interacting with humoral and cellular effector systems in the blood. Consequently, the level of this protein in plasma increases greatly during acute phase response to tissue injury, infection, or other inflammatory stimuli.,CRP,PTX1,Epigenetics & Nuclear Signaling,Cell Biology & Developmental Biology,Apoptosis,Endocrine & Metabolism,Endocrine and metabolic diseases,Metabolic disorders,Immunology & Inflammation,Cell Intrinsic Innate Immunity Signaling Pathway,Neuroscience,Neurodegenerative Diseases Markers,Other Neurological disorders,Cardiovascular,Blood,Heart,Cerebralvascular accident-CVA,CRP</p>
Molecular Weight:	10 kDa/25 kDa
Gene ID:	1401
UniProt:	P02741
Pathways:	Carbohydrate Homeostasis

Application Details

Application Notes:	WB,1:500 - 1:2000,IF,1:50 - 1:200
Restrictions:	For Research Use only

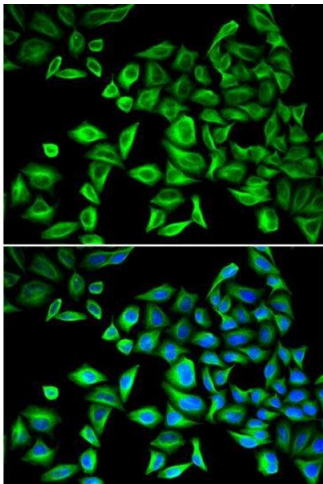
Handling

Format:	Liquid
Buffer:	PBS with 0.02 % sodium azide,50 % glycerol, pH 7.3.
Preservative:	Sodium azide
Precaution of Use:	This product contains Sodium azide: a POISONOUS AND HAZARDOUS SUBSTANCE which should be handled by trained staff only.
Handling Advice:	Avoid freeze / thaw cycles
Storage:	-20 °C
Storage Comment:	Store at -20°C. Avoid freeze / thaw cycles.



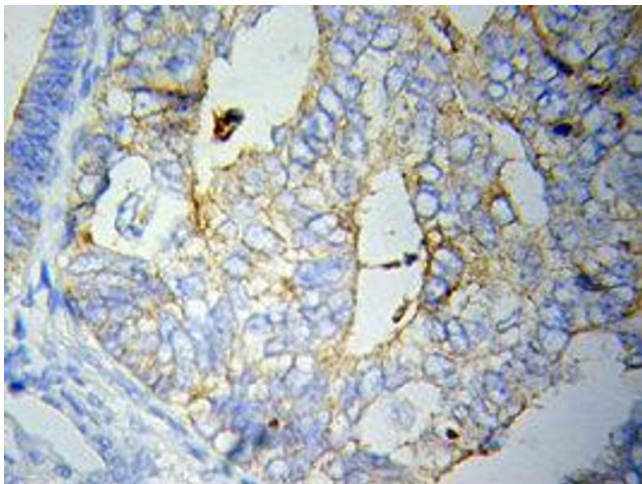
Immunofluorescence

Image 1. Immunofluorescence analysis of U2OS cells using C-Reactive Protein (C-Reactive Protein (CRP)) Rabbit pAb (ABIN3020715, ABIN3020716, ABIN3020717 and ABIN6213688) at dilution of 1:100. Blue: DAPI for nuclear staining.



Immunofluorescence

Image 2.



Immunohistochemistry

Image 3.

Please check the [product details page](#) for more images. Overall 6 images are available for ABIN3020716.