



[Go to Product page](#)

Datasheet for ABIN3020820

anti-Olfactomedin 1 antibody (AA 90-220)

2 Images

Overview

Quantity:	100 µL
Target:	Olfactomedin 1 (OLFM1)
Binding Specificity:	AA 90-220
Reactivity:	Human
Host:	Rabbit
Clonality:	Polyclonal
Conjugate:	This Olfactomedin 1 antibody is un-conjugated
Application:	Western Blotting (WB)

Product Details

Immunogen:	Recombinant fusion protein containing a sequence corresponding to amino acids 90-220 of human OLFM1 (NP_055094.1).
Sequence:	IEVLDRRTQR DLQYVEKMEN QMKGLESKFK QVEESHKQHL ARQFKAIKAK MDELRLIPV LEEYKADAKL VLQFKEEVQN LTSVLNELQE EIGAYDYDEL QSRVSNLEER LRACMQKLAC GKLTGISDPV T
Isotype:	IgG
Cross-Reactivity:	Human, Mouse
Characteristics:	Polyclonal Antibodies

Target Details

Target:	Olfactomedin 1 (OLFM1)
---------	------------------------

Target Details

Alternative Name:	OLFM1 (OLFM1 Products)
Background:	<p>This gene product shares extensive sequence similarity with the rat neuronal olfactomedin-related ER localized protein. While the exact function of the encoded protein is not known, its abundant expression in brain suggests that it may have an essential role in nerve tissue.</p> <p>Several alternatively spliced transcripts encoding different isoforms have been found for this gene.,OLFM1,AMY,NOE1,NOELIN1,OlfA,noelin,Neuroscience,Neurodegenerative Diseases,Stem Cells,Neural Stem Cells,OLFM1</p>

Molecular Weight:	15-17 kDa/52-55 kDa
-------------------	---------------------

Gene ID:	10439
----------	-------

UniProt:	Q99784
----------	------------------------

Application Details

Application Notes:	WB,1:500 - 1:2000
--------------------	-------------------

Restrictions:	For Research Use only
---------------	-----------------------

Handling

Format:	Liquid
---------	--------

Buffer:	PBS with 0.02 % sodium azide,50 % glycerol, pH 7.3.
---------	---

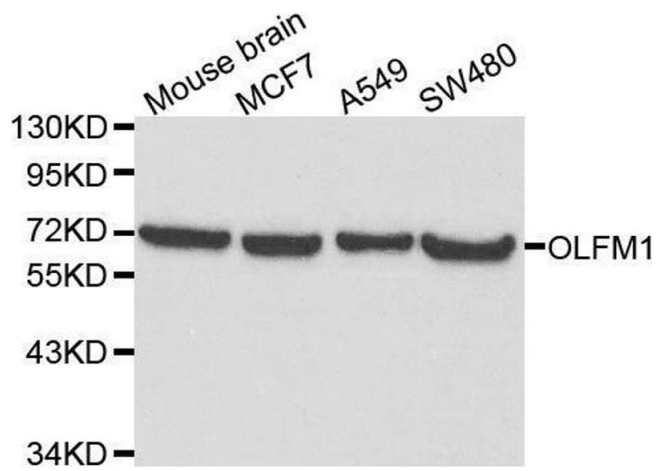
Preservative:	Sodium azide
---------------	--------------

Precaution of Use:	This product contains Sodium azide: a POISONOUS AND HAZARDOUS SUBSTANCE which should be handled by trained staff only.
--------------------	--

Handling Advice:	Avoid freeze / thaw cycles
------------------	----------------------------

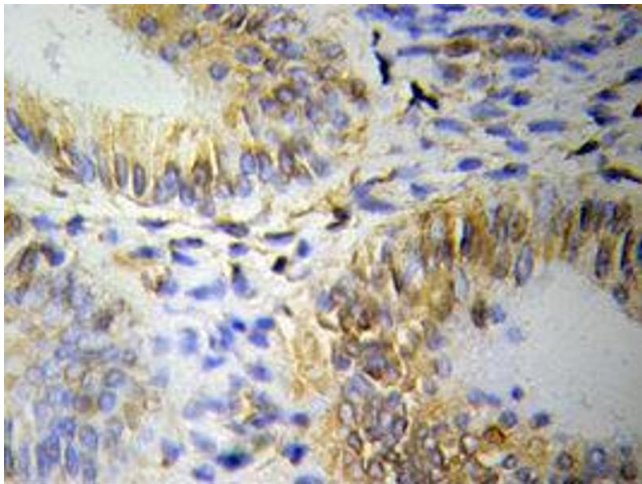
Storage:	-20 °C
----------	--------

Storage Comment:	Store at -20°C. Avoid freeze / thaw cycles.
------------------	---



Western Blotting

Image 1. Western blot analysis of extracts of various cell lines, using OLFM1 antibody.



Immunohistochemistry

Image 2.