



Datasheet for ABIN3020849
anti-RHOA antibody (C-Term)



[Go to Product page](#)

4 Images

Overview

Quantity:	100 µL
Target:	RHOA
Binding Specificity:	C-Term
Reactivity:	Human
Host:	Rabbit
Clonality:	Polyclonal
Conjugate:	This RHOA antibody is un-conjugated
Application:	Western Blotting (WB), Immunohistochemistry (IHC), Immunofluorescence (IF)

Product Details

Immunogen:	A synthetic peptide corresponding to a sequence within amino acids 100 to the C-terminus of human RhoA (NP_001655.1).
Sequence:	TPEVKHFPCPN VPIILVGNKK DLRNDEHTRR ELAKMKQEPV KPEEGRDMAN RIGAFGYMEC SAKTKDGVRE VFEMATRAAL QARRGKKKSG CLVL
Isotype:	IgG
Cross-Reactivity:	Human, Mouse, Rat
Characteristics:	Polyclonal Antibodies
Purification:	Affinity purification

Target Details

Target:	RHOA
Alternative Name:	RHOA (RHOA Products)
Background:	<p>This gene encodes a member of the Rho family of small GTPases, which cycle between inactive GDP-bound and active GTP-bound states and function as molecular switches in signal transduction cascades. Rho proteins promote reorganization of the actin cytoskeleton and regulate cell shape, attachment, and motility. Overexpression of this gene is associated with tumor cell proliferation and metastasis. Multiple alternatively spliced variants have been identified.,ARH12,ARHA,RHO12,RHOH12,Rho,RHOA,RhoA,Cancer,Signal Transduction,G protein signaling,Signal Transduction,MAPK-JNK Signaling Pathway,Cell Biology & Developmental Biology,Cell Adhesion,Cytoskeleton,Microfilaments,Microtubules,Actins,TGF-b-Smad Signaling Pathway,Immunology & Inflammation,B Cell Receptor Signaling Pathway,RHOA</p>
Molecular Weight:	21 kDa
Gene ID:	387
UniProt:	P61586
Pathways:	Microtubule Dynamics , WNT Signaling , Neurotrophin Signaling Pathway , Intracellular Steroid Hormone Receptor Signaling Pathway , Regulation of Intracellular Steroid Hormone Receptor Signaling , Regulation of Actin Filament Polymerization , Cell-Cell Junction Organization , Positive Regulation of Endopeptidase Activity , Signaling Events mediated by VEGFR1 and VEGFR2 , Thromboxane A2 Receptor Signaling , SARS-CoV-2 Protein Interactome

Application Details

Application Notes:	WB,1:500 - 1:2000,IHC,1:50 - 1:200,IF,1:50 - 1:200
Restrictions:	For Research Use only

Handling

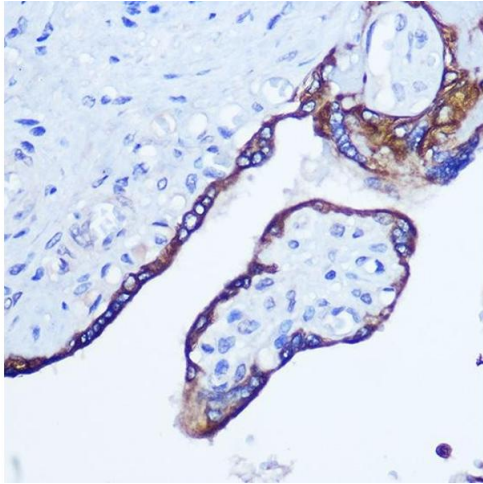
Format:	Liquid
Buffer:	PBS with 0.02 % sodium azide,50 % glycerol, pH 7.3.
Preservative:	Sodium azide
Precaution of Use:	This product contains Sodium azide: a POISONOUS AND HAZARDOUS SUBSTANCE which should be handled by trained staff only.
Handling Advice:	Avoid freeze / thaw cycles

Handling

Storage: -20 °C

Storage Comment: Store at -20°C. Avoid freeze / thaw cycles.

Images

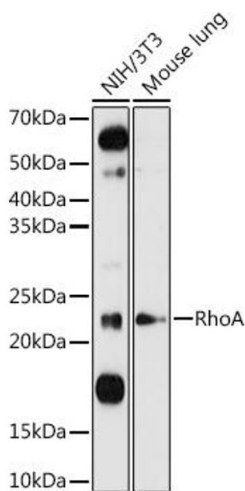
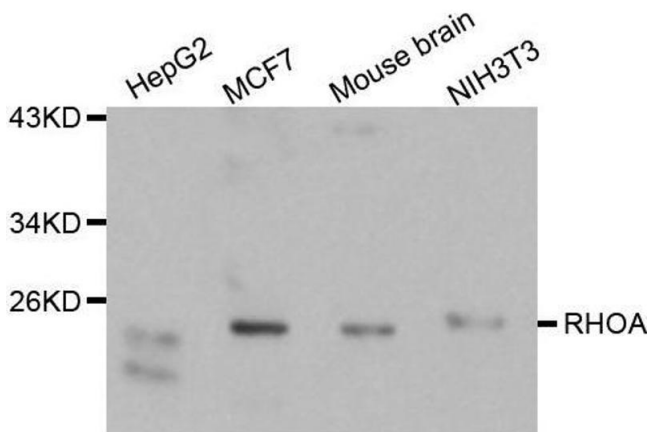


Immunohistochemistry

Image 1. Immunohistochemistry of paraffin-embedded human placenta using RhoA Rabbit pAb (ABIN3020848, ABIN3020849, ABIN3020850 and ABIN6213755) at dilution of 1:100 (40x lens). Perform microwave antigen retrieval with 10 mM Tris/EDTA buffer pH 9.0 before commencing with IHC staining protocol.

Western Blotting

Image 2. Western blot analysis of extracts of various cell lines, using RHOA antibody.



Western Blotting

Image 3. Western blot analysis of extracts of various cell lines, using RhoA antibody (ABIN3020848, ABIN3020849, ABIN3020850 and ABIN6213755) at 1:1000 dilution. Secondary antibody: HRP Goat Anti-Rabbit IgG (H+L) (ABIN1684268 and ABIN3020597) at 1:10000 dilution. Lysates/proteins: 25 µg per lane. Blocking buffer: 3 % nonfat dry milk in TBST. Detection: ECL Basic Kit (RM00020). Exposure time: 90s.

Please check the [product details page](#) for more images. Overall 4 images are available for ABIN3020849.