



Datasheet for ABIN3020895
anti-TREM1 antibody (AA 21-130)



[Go to Product page](#)

2 Images

Overview

Quantity:	100 µL
Target:	TREM1
Binding Specificity:	AA 21-130
Reactivity:	Human
Host:	Rabbit
Clonality:	Polyclonal
Conjugate:	This TREM1 antibody is un-conjugated
Application:	Western Blotting (WB), Immunohistochemistry (IHC)

Product Details

Immunogen:	Recombinant fusion protein containing a sequence corresponding to amino acids 21-130 of human TREM1 (NP_061113.1).
Sequence:	ATKLTEEKYE LKEGQTLQDK CDYTLKLFAS SQKAWQIIRD GEMPKTLACT ERPSKNSHPV QVGRILEEDY HDHGLLRVRM VNLQVEDSGL YQCVIYQPPK EPHMLFDRIR
Isotype:	IgG
Cross-Reactivity:	Human, Rat
Characteristics:	Polyclonal Antibodies

Target Details

Target:	TREM1
---------	-------

Target Details

Alternative Name: [TREM1 \(TREM1 Products\)](#)

Background: This gene encodes a receptor belonging to the Ig superfamily that is expressed on myeloid cells. This protein amplifies neutrophil and monocyte-mediated inflammatory responses triggered by bacterial and fungal infections by stimulating release of pro-inflammatory chemokines and cytokines, as well as increased surface expression of cell activation markers. Alternatively spliced transcript variants encoding different isoforms have been noted for this gene.,TREM1,CD354,TREM-1,Immunology & Inflammation,CD markers,Cell Intrinsic Innate Immunity Signaling Pathway,TREM1

Molecular Weight: 17 kDa/25 kDa/26 kDa

Gene ID: 54210

UniProt: [Q9NP99](#)

Application Details

Application Notes: WB,1:500 - 1:2000,IHC,1:100 - 1:200

Restrictions: For Research Use only

Handling

Format: Liquid

Buffer: PBS with 0.02 % sodium azide,50 % glycerol, pH 7.3.

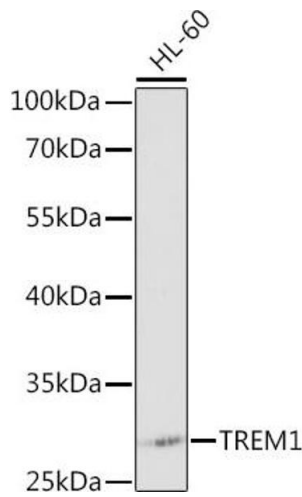
Preservative: Sodium azide

Precaution of Use: This product contains Sodium azide: a POISONOUS AND HAZARDOUS SUBSTANCE which should be handled by trained staff only.

Handling Advice: Avoid freeze / thaw cycles

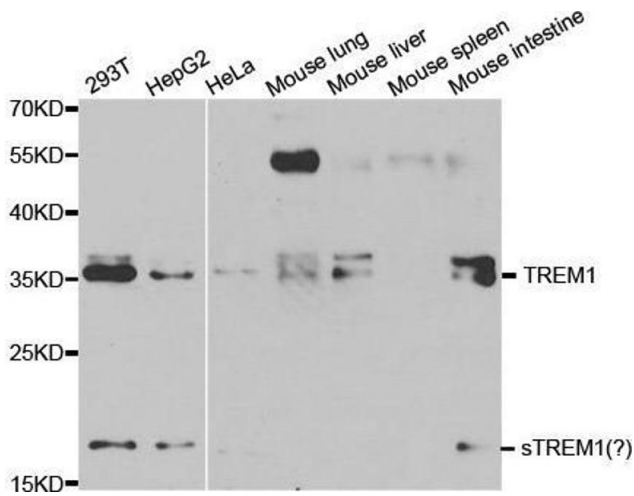
Storage: -20 °C

Storage Comment: Store at -20°C. Avoid freeze / thaw cycles.



Western Blotting

Image 1. Western blot analysis of extracts of HL-60 cells, using TREM1 antibody (ABIN3020894, ABIN3020895, ABIN3020896 and ABIN6213780) at 1:1000 dilution. Secondary antibody: HRP Goat Anti-Rabbit IgG (H+L) (ABIN1684268 and ABIN3020597) at 1:10000 dilution. Lysates/proteins: 25 µg per lane. Blocking buffer: 3 % nonfat dry milk in TBST.



Western Blotting

Image 2. Western blot analysis of extracts of various cell lines, using TREM1 antibody.