



[Go to Product page](#)

Datasheet for ABIN302091
anti-GRB2 antibody (AA 198-217)

2 Images

Overview

Quantity:	0.1 mg
Target:	GRB2
Binding Specificity:	AA 198-217
Reactivity:	Human
Host:	Rabbit
Clonality:	Polyclonal
Conjugate:	This GRB2 antibody is un-conjugated
Application:	Western Blotting (WB)

Product Details

Immunogen:	Synthetic peptide corresponding to C-terminus of human Grb2 (amino acids 198-217).
Specificity:	The polyclonal antibody recognizes Grb2, a highly conserved approximately 26 kDa intracellular adaptor protein. The immunogen has 100 % identity between man, cow, rat and mouse.
Cross-Reactivity (Details):	Human, Other species Not tested
Purification:	Purified by ligand affinity chromatography.
Purity:	> 95 % (by SDS-PAGE)

Target Details

Target:	GRB2
Alternative Name:	Grb2 (GRB2 Products)

Target Details

Background: Growth factor receptor bound protein 2, Grb2 (growth factor receptor-bound protein 2) is a highly conserved adaptor protein composed of central SH2 domain flanked by two terminal SH3 domains. Grb2 mediates coupling of receptor protein tyrosine kinases to a guanine nucleotide exchange factor Sos, thereby enabling the tyrosine kinases to stimulate activity of Ras and hence of MAP kinase pathway. Grb2 also can bind to receptor protein tyrosine phosphatases and affect their signaling.,ASH, NCKAP2

Gene ID: 2885

UniProt: [P62993](#)

Pathways: [RTK Signaling](#), [TCR Signaling](#), [Fc-epsilon Receptor Signaling Pathway](#), [EGFR Signaling Pathway](#), [Neurotrophin Signaling Pathway](#), [Regulation of Actin Filament Polymerization](#), [Hepatitis C, Signaling Events mediated by VEGFR1 and VEGFR2](#), [Signaling of Hepatocyte Growth Factor Receptor](#), [EGFR Downregulation](#)

Application Details

Application Notes: Western blotting: Recommended dilution: 1-2 µg/mL, reducing conditions.

Restrictions: For Research Use only

Handling

Concentration: 1 mg/mL

Buffer: Stabilizing phosphate buffered saline (PBS), pH 7.4, 15 mM sodium azide

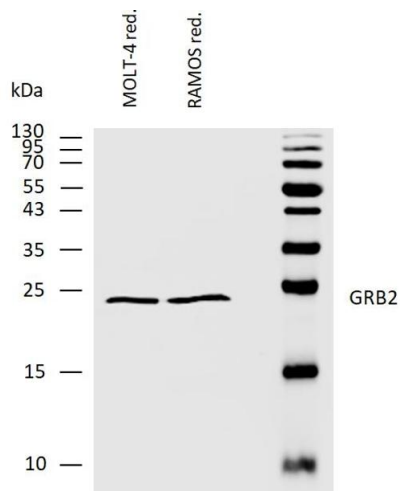
Preservative: Sodium azide

Precaution of Use: This product contains Sodium azide: a POISONOUS AND HAZARDOUS SUBSTANCE which should be handled by trained staff only.

Handling Advice: **Do not freeze.**

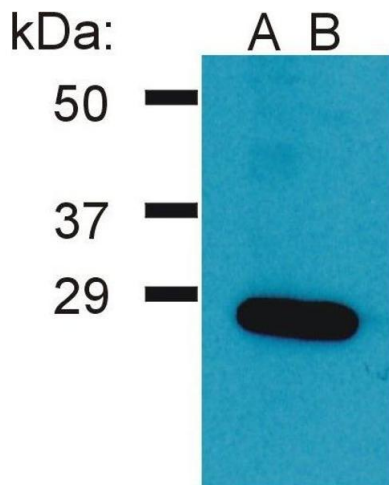
Storage: 4 °C

Storage Comment: Store at 2-8°C. Do not freeze.



Western Blotting

Image 1. Western blotting analysis of human GRB2 using rabbit polyclonal antibody PAb (554) on lysates of MOLT-4 and RAMOS cell lines under reducing conditions. Nitrocellulose membrane was probed with 2 µg/mL of rabbit anti-GRB2 antibody followed by IRDye800-conjugated anti-rabbit secondary antibody. A specific band was detected for GRB2 at approximately 24 kDa.



Western Blotting

Image 2. Western Blotting analysis (reducing conditions) of Ramos cell lysate using two batches of rabbit anti-Grb2 polyclonal (A, B).