



[Go to Product page](#)

Datasheet for ABIN3020912
anti-IGF1 antibody (C-Term)

3 Images

Overview

Quantity:	100 µL
Target:	IGF1
Binding Specificity:	C-Term
Reactivity:	Human
Host:	Rabbit
Clonality:	Polyclonal
Conjugate:	This IGF1 antibody is un-conjugated
Application:	Western Blotting (WB), Immunohistochemistry (IHC)

Product Details

Immunogen:	A synthetic peptide corresponding to a sequence within amino acids 90 to the C-terminus of human IGF1 (NP_000609.1).
Sequence:	GIVDECCFRS CDLRRLEMYC APLKPAKSAR SVRAQRHTDM PKTQKQEVHLK NASRGSAGNK NYRM
Isotype:	IgG
Cross-Reactivity:	Human, Mouse, Rat
Characteristics:	Polyclonal Antibodies
Purification:	Affinity purification

Target Details

Target:	IGF1
Alternative Name:	IGF1 (IGF1 Products)
Background:	The protein encoded by this gene is similar to insulin in function and structure and is a member of a family of proteins involved in mediating growth and development. The encoded protein is processed from a precursor, bound by a specific receptor, and secreted. Defects in this gene are a cause of insulin-like growth factor I deficiency. Alternative splicing results in multiple transcript variants encoding different isoforms that may undergo similar processing to generate mature protein.,IGF1,IGF-I,IGFI,MGF,Cancer,Signal Transduction,Cell Biology & Developmental Biology,Growth factor,Insulin and insulin-like,IGF1
Molecular Weight:	15 kDa/17 kDa/21 kDa
Gene ID:	3479
UniProt:	P05019
Pathways:	RTK Signaling , Intracellular Steroid Hormone Receptor Signaling Pathway , Peptide Hormone Metabolism , Hormone Activity , Regulation of Intracellular Steroid Hormone Receptor Signaling , Regulation of Hormone Metabolic Process , Regulation of Hormone Biosynthetic Process , Stem Cell Maintenance , Glycosaminoglycan Metabolic Process , Regulation of Carbohydrate Metabolic Process , Autophagy , Smooth Muscle Cell Migration , Activated T Cell Proliferation , Positive Regulation of fat Cell Differentiation

Application Details

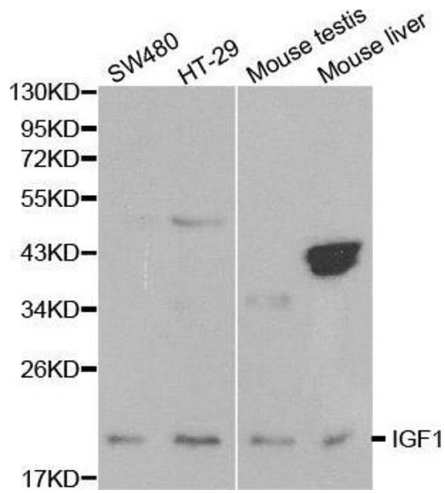
Application Notes:	WB,1:500 - 1:2000,IHC,1:50 - 1:200
Restrictions:	For Research Use only

Handling

Format:	Liquid
Buffer:	PBS with 0.02 % sodium azide,50 % glycerol, pH 7.3.
Preservative:	Sodium azide
Precaution of Use:	This product contains Sodium azide: a POISONOUS AND HAZARDOUS SUBSTANCE which should be handled by trained staff only.
Handling Advice:	Avoid freeze / thaw cycles
Storage:	-20 °C

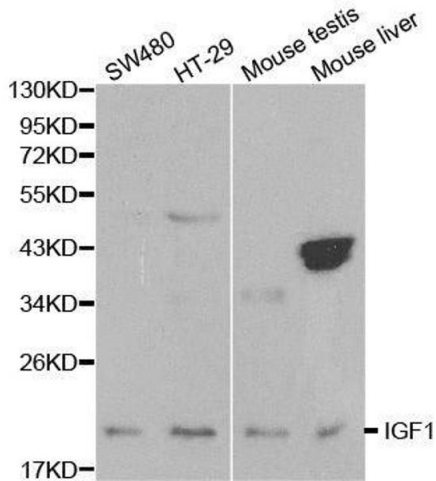
Storage Comment: Store at -20°C. Avoid freeze / thaw cycles.

Images



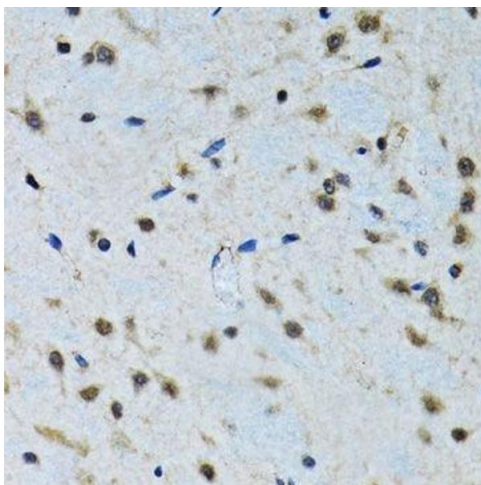
Western Blotting

Image 1. Western blot analysis of extracts of various cell lines, using IGF1 antibody.



Western Blotting

Image 2. Western blot analysis of extracts of various cell lines, using IGF1 antibody.



Immunohistochemistry (Paraffin-embedded Sections)

Image 3. Immunohistochemistry of paraffin-embedded rat brain using IGF1 antibody.