



[Go to Product page](#)

Datasheet for ABIN3021063
anti-SMNDC1 antibody (AA 1-238)

2 Images

Overview

Quantity:	100 µL
Target:	SMNDC1
Binding Specificity:	AA 1-238
Reactivity:	Human
Host:	Rabbit
Clonality:	Polyclonal
Conjugate:	This SMNDC1 antibody is un-conjugated
Application:	Western Blotting (WB)

Product Details

Immunogen:	Recombinant fusion protein containing a sequence corresponding to amino acids 1-238 of human SMNDC1 (NP_005862.1).
Sequence:	MSEDLAKQLA SYKAQLQQVE AALSGNGENE DLLKLLKDLQ EVIELTKDLL STQPSETLAS SDSFASTQPT HSWKVGDKCM AVWSEDGQCY EAEIEEIDEE NGTAAITFAG YGNAEVTPLL NLKPVVEGRK AKEDSGNKPM SKKEMIAQQR EYKKKKALKK AQRILELEQE REDQKVKWQQ FNNRAYSKNK KGQVKRSIFA SPESVTGKVG VGTGCIADKP MTQYQDTSKY NVRHLMPQ
Isotype:	IgG
Cross-Reactivity:	Human, Mouse, Rat
Characteristics:	Polyclonal Antibodies

Target Details

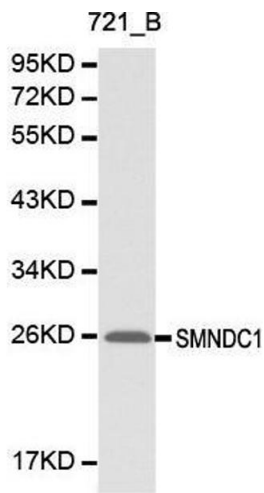
Target:	SMNDC1
Alternative Name:	SMNDC1 (SMNDC1 Products)
Background:	<p>This gene is a paralog of SMN1 gene, which encodes the survival motor neuron protein, mutations in which are cause of autosomal recessive proximal spinal muscular atrophy. The protein encoded by this gene is a nuclear protein that has been identified as a constituent of the spliceosome complex. This gene is differentially expressed, with abundant levels in skeletal muscle, and may share similar cellular function as the SMN1 gene.,SMNDC1,SMNR,SPF30,TDRD16C,Epigenetics & Nuclear Signaling,RNA Binding,Cell Biology & Developmental Biology,Apoptosis,Cell Cycle,Endocrine & Metabolism,SMNDC1</p>
Molecular Weight:	26 kDa
Gene ID:	10285
UniProt:	075940

Application Details

Application Notes:	WB,1:500 - 1:2000
Restrictions:	For Research Use only

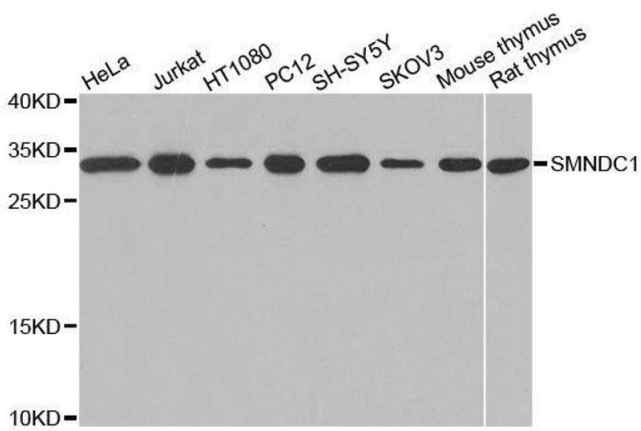
Handling

Format:	Liquid
Buffer:	PBS with 0.02 % sodium azide,50 % glycerol, pH 7.3.
Preservative:	Sodium azide
Precaution of Use:	This product contains Sodium azide: a POISONOUS AND HAZARDOUS SUBSTANCE which should be handled by trained staff only.
Handling Advice:	Avoid freeze / thaw cycles
Storage:	-20 °C
Storage Comment:	Store at -20°C. Avoid freeze / thaw cycles.



Western Blotting

Image 1. Western blot analysis of 721-B cell lysate using SMNDC1 antibody.



Western Blotting

Image 2. Western blot analysis of extracts of various cell lines, using SMNDC1 antibody.