



[Go to Product page](#)

Datasheet for ABIN3021088
anti-ATG13 antibody (AA 281-480)

6 Images

Overview

Quantity:	100 µL
Target:	ATG13
Binding Specificity:	AA 281-480
Reactivity:	Human
Host:	Rabbit
Clonality:	Polyclonal
Conjugate:	This ATG13 antibody is un-conjugated
Application:	Western Blotting (WB)

Product Details

Immunogen:	Recombinant fusion protein containing a sequence corresponding to amino acids 281-480 of human ATG13 (NP_055556.2).
Sequence:	VHGTQADQER LATCTPSDRT HCAATPSSSE DTETVSNSSE GRASPHDVLE TIFVRKVGAF VNKPINQVTL TSLDIPFAMF APKNLELEDT DPMVNPPDSP ETESPLQGSL HSDGSSGGSS GNTHDDFVMI DFKPAFSKDD ILPMDLGTFY REFQNPQQLS SLSIDIGAQS MAEDLDSLPE KLAVHEKNVR EFDAFVETLQ
Isotype:	IgG
Cross-Reactivity:	Human, Mouse, Rat
Characteristics:	Polyclonal Antibodies
Purification:	Affinity purification

Target Details

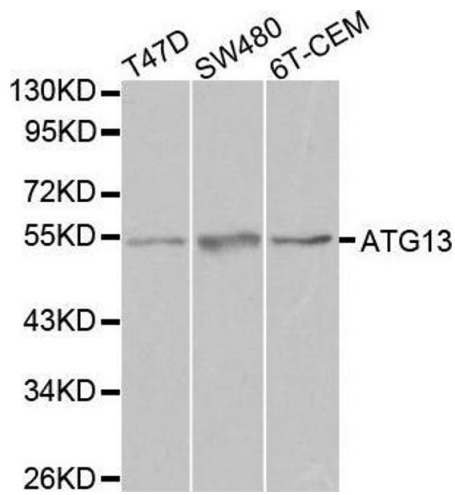
Target:	ATG13
Alternative Name:	ATG13 (ATG13 Products)
Background:	The protein encoded by this gene is an autophagy factor and a target of the TOR kinase signaling pathway. The encoded protein is essential for autophagosome formation and mitophagy. KIAA0652 , PARATARG8 , ATG13 , Cancer , Signal Transduction , PI3K-Akt Signaling Pathway , mTOR Signaling Pathway , Cell Biology & Developmental Biology , Autophagy , Endocrine & Metabolism , Mitochondrial metabolism , Akt downstream targets , ATGs , ATG13
Molecular Weight:	44 kDa/52 kDa/56 kDa/60 kDa
Gene ID:	9776
UniProt:	O75143
Pathways:	PI3K-Akt Signaling , Autophagy

Application Details

Application Notes:	WB, 1:500 - 1:2000
Restrictions:	For Research Use only

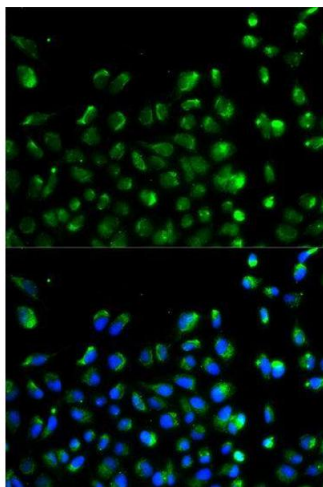
Handling

Format:	Liquid
Buffer:	PBS with 0.02 % sodium azide, 50 % glycerol, pH 7.3.
Preservative:	Sodium azide
Precaution of Use:	This product contains Sodium azide: a POISONOUS AND HAZARDOUS SUBSTANCE which should be handled by trained staff only.
Handling Advice:	Avoid freeze / thaw cycles
Storage:	-20 °C
Storage Comment:	Store at -20°C. Avoid freeze / thaw cycles.



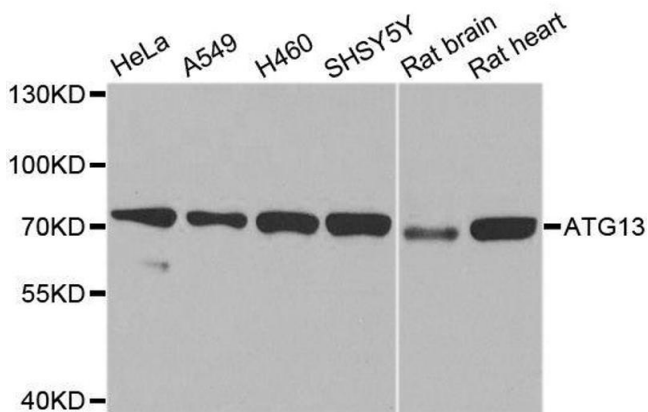
Western Blotting

Image 1. Western blot analysis of extracts of various cell lines, using ATG13 antibody.



Immunofluorescence

Image 2. Immunofluorescence analysis of A549 cell using ATG13 antibody. Blue: DAPI for nuclear staining.



Western Blotting

Image 3. Western blot analysis of extracts of various cell lines, using ATG13 antibody.

Please check the [product details page](#) for more images. Overall 6 images are available for ABIN3021088.