

Datasheet for ABIN3021168
anti-JUP antibody (AA 1-300)



[Go to Product page](#)

4 Images

Overview

Quantity:	100 µL
Target:	JUP
Binding Specificity:	AA 1-300
Reactivity:	Human
Host:	Rabbit
Clonality:	Polyclonal
Conjugate:	This JUP antibody is un-conjugated
Application:	Western Blotting (WB), Immunoprecipitation (IP)

Product Details

Immunogen:	Recombinant fusion protein containing a sequence corresponding to amino acids 1-300 of human gamma-Catenin (NP_002221.1).
Sequence:	MEVMNLMEQP IKVTEWQQT YDSGIHSGA NTCVPSVSSK GIMEEDEACG RQYTLKKT TT YTGQVPPSQG DLEYQMSTTA RAKRVREAMC PGVSGEDSSL LLATQVEGQA TNLQRLAEP S QLLKSAIVHL INYQDDAELA TRALPELTKL LNDEDPVVVT KAAMIVNQLS KKEASRRALM GSPQLVAAV RTMQNTSDLD TARCTTSILH NLSHHREGLL AIFKSGGIPA LVRMLSSPVE SVLFYAITTL HNLLLYQEGA KMAVRLADGL QKMVPLLKNK NPKFLAITTD CLQLLAYGNQ
Isotype:	IgG
Cross-Reactivity:	Human, Mouse
Characteristics:	Polyclonal Antibodies

Target Details

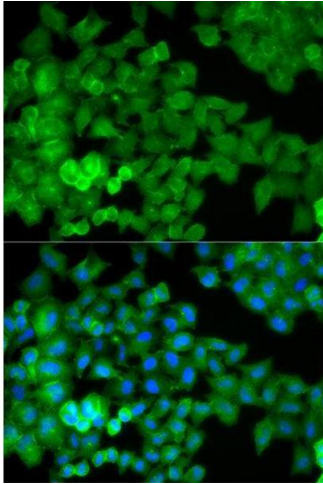
Target:	JUP
Alternative Name:	JUP (JUP Products)
Background:	<p>This gene encodes a major cytoplasmic protein which is the only known constituent common to submembranous plaques of both desmosomes and intermediate junctions. This protein forms distinct complexes with cadherins and desmosomal cadherins and is a member of the catenin family since it contains a distinct repeating amino acid motif called the armadillo repeat. Mutation in this gene has been associated with Naxos disease. Alternative splicing occurs in this gene, however, not all transcripts have been fully described.,JUP,ARVD12,CTNNG,DP3,DPIII,PDGB,PKGB,Signal Transduction,Cell Biology & Developmental Biology,Cell Adhesion,Tight Junctions,Cytoskeleton,Microfilaments,JUP</p>
Molecular Weight:	81 kDa
Gene ID:	3728
UniProt:	P14923
Pathways:	Cell-Cell Junction Organization , Maintenance of Protein Location

Application Details

Application Notes:	WB,1:500 - 1:2000,IP,1:50 - 1:100
Restrictions:	For Research Use only

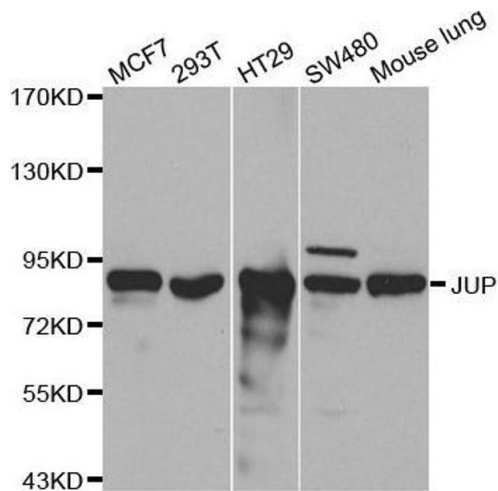
Handling

Format:	Liquid
Buffer:	PBS with 0.02 % sodium azide,50 % glycerol, pH 7.3.
Preservative:	Sodium azide
Precaution of Use:	This product contains Sodium azide: a POISONOUS AND HAZARDOUS SUBSTANCE which should be handled by trained staff only.
Handling Advice:	Avoid freeze / thaw cycles
Storage:	-20 °C
Storage Comment:	Store at -20°C. Avoid freeze / thaw cycles.



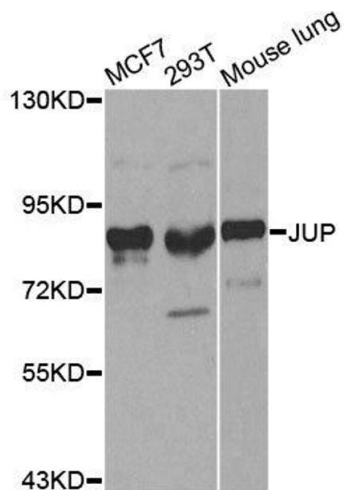
Immunofluorescence

Image 1. Immunofluorescence analysis of HeLa cell using JUP antibody. Blue: DAPI for nuclear staining.



Western Blotting

Image 2. Western blot analysis of extracts of various cell lines, using JUP antibody.



Western Blotting

Image 3. Western blot analysis of extracts of various cell lines, using JUP antibody.

Please check the [product details page](#) for more images. Overall 4 images are available for ABIN3021168.