

Datasheet for ABIN3021176  
**anti-Cathepsin B antibody (AA 1-339)**

## 8 Images

[Go to Product page](#)

## Overview

Quantity:	100 µL
Target:	Cathepsin B (CTSB)
Binding Specificity:	AA 1-339
Reactivity:	Human
Host:	Rabbit
Clonality:	Polyclonal
Conjugate:	This Cathepsin B antibody is un-conjugated
Application:	Western Blotting (WB), Immunohistochemistry (IHC), Immunofluorescence (IF)

## Product Details

Immunogen:	Recombinant fusion protein containing a sequence corresponding to amino acids 1-339 of human Cathepsin B (NP_001899.1).
Sequence:	MWQLWASLCC LLVLANARSR PSFHPLSDEL VNYVNRNTT WQAGHNFYNV DMSYLRKLCG TFLGGPKPPQ RVMFTEDLKL PASFDAREQW PQCPTIKEIR DQGSCGSCWA FGAVEAISDR ICIHTNAHVS VEVSADLLT CCGSMCGDGC NGGYPAEAWN FWTRKGLVSG GLYESHVGCGR PYSIPPCEHH VNGSRPPCTG EGDTPKCSKI CEPGYSPTYK QDKHYGYNSY SVSNSEKDIM AEIYKNGPVE GAFSVYSDFL LYKSGVYQHV TGEMMGGHAI RILGWGVENG TPYWLVANSW NTDWGDNGFF KILRGQDHCG IESEVVAGIP RTDQYWEKI
Isotype:	IgG
Cross-Reactivity:	Human, Mouse, Rat
Characteristics:	Polyclonal Antibodies

## Product Details

Purification: Affinity purification

## Target Details

Target: Cathepsin B (CTSB)

Alternative Name: CTSB ([CTSB Products](#))

Background: This gene encodes a member of the C1 family of peptidases. Alternative splicing of this gene results in multiple transcript variants. At least one of these variants encodes a preproprotein that is proteolytically processed to generate multiple protein products. These products include the cathepsin B light and heavy chains, which can dimerize to form the double chain form of the enzyme. This enzyme is a lysosomal cysteine protease with both endopeptidase and exopeptidase activity that may play a role in protein turnover. It is also known as amyloid precursor protein secretase and is involved in the proteolytic processing of amyloid precursor protein (APP). Incomplete proteolytic processing of APP has been suggested to be a causative factor in Alzheimer's disease, the most common cause of dementia. Overexpression of the encoded protein has been associated with esophageal adenocarcinoma and other tumors. Multiple pseudogenes of this gene have been identified.,APPS,CPSB,Cathepsin B,CTSB,Cancer,Invasion and Metastasis,Signal Transduction,Cell Biology & Developmental Biology,Apoptosis,Cell Adhesion,Cytoskeleton,Extracellular Matrix,Neuroscience,CTSB

Molecular Weight: 37 kDa

Gene ID: 1508

UniProt: [P07858](#)

Pathways: [Activation of Innate immune Response](#), [Toll-Like Receptors Cascades](#)

## Application Details

Application Notes: WB,1:500 - 1:2000,IHC,1:50 - 1:200,IF,1:50 - 1:200

Restrictions: For Research Use only

## Handling

Format: Liquid

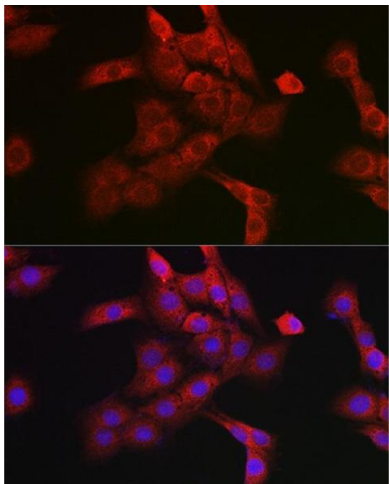
Buffer: PBS with 0.02 % sodium azide,50 % glycerol, pH 7.3.

Preservative: Sodium azide

Handling

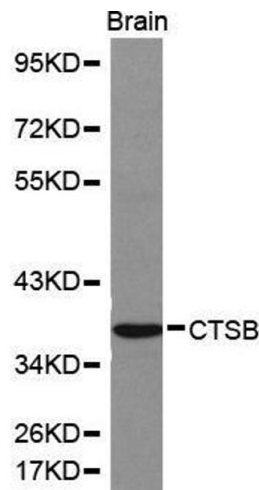
Precaution of Use:	This product contains Sodium azide: a POISONOUS AND HAZARDOUS SUBSTANCE which should be handled by trained staff only.
Handling Advice:	Avoid freeze / thaw cycles
Storage:	-20 °C
Storage Comment:	Store at -20°C. Avoid freeze / thaw cycles.

Images



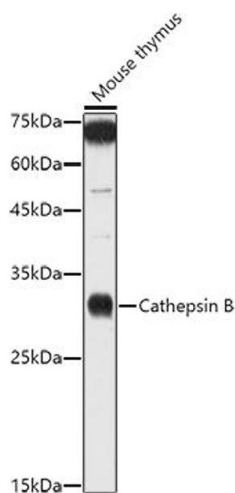
**Immunofluorescence**

**Image 1.** Immunofluorescence analysis of PC-12 cells using Cathepsin B Rabbit pAb (ABIN3021175, ABIN3021176, ABIN3021177 and ABIN6214050) at dilution of 1:100 (40x lens). Blue: DAPI for nuclear staining.



**Western Blotting**

**Image 2.**



### Western Blotting

**Image 3.** Western blot analysis of extracts of Mouse thymus, using Cathepsin B antibody (ABIN3021175, ABIN3021176, ABIN3021177 and ABIN6214050) at 1:1000 dilution. Secondary antibody: HRP Goat Anti-Rabbit IgG (H+L) (ABIN1684268 and ABIN3020597) at 1:10000 dilution. Lysates/proteins: 25 µg per lane. Blocking buffer: 3 % nonfat dry milk in TBST. Detection: ECL Enhanced Kit (RM00021). Exposure time: 180s.

Please check the [product details page](#) for more images. Overall 8 images are available for ABIN3021176.