

Datasheet for ABIN3021200  
**anti-RAP1A antibody (AA 50-150)**

## 5 Images

[Go to Product page](#)

## Overview

Quantity:	100 µL
Target:	RAP1A
Binding Specificity:	AA 50-150
Reactivity:	Human
Host:	Rabbit
Clonality:	Polyclonal
Conjugate:	This RAP1A antibody is un-conjugated
Application:	Western Blotting (WB), Immunohistochemistry (IHC), Immunofluorescence (IF)

## Product Details

Immunogen:	A synthetic peptide corresponding to a sequence within amino acids 50-150 of human Rap1A (NP_002875.1).
Sequence:	QCMLEILDTA GTEQFTAMRD LYMKNGQGFA LVYSITAQST FNDLQDLREQ ILRVKDTEDV PMILVGKCD LEDERVVGKE QGQNLARQWC NCAFLESSAK S
Isotype:	IgG
Cross-Reactivity:	Human, Mouse, Rat
Characteristics:	Polyclonal Antibodies

## Target Details

Target:	RAP1A
---------	-------

## Target Details

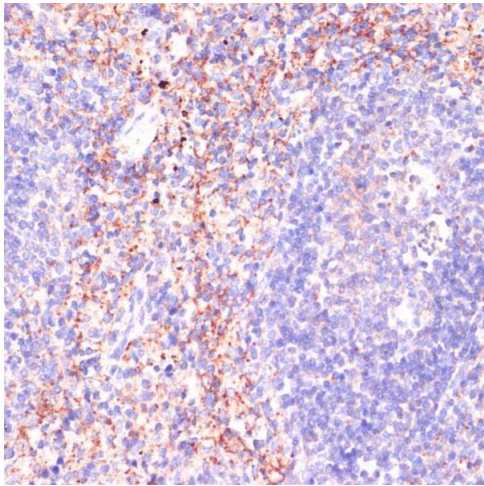
Alternative Name:	RAP1A ( <a href="#">RAP1A Products</a> )
Background:	<p>This gene encodes a member of the Ras family of small GTPases. The encoded protein undergoes a change in conformational state and activity, depending on whether it is bound to GTP or GDP. This protein is activated by several types of guanine nucleotide exchange factors (GEFs), and inactivated by two groups of GTPase-activating proteins (GAPs). The activation status of the encoded protein is therefore affected by the balance of intracellular levels of GEFs and GAPs. The encoded protein regulates signaling pathways that affect cell proliferation and adhesion, and may play a role in tumor malignancy. Pseudogenes of this gene have been defined on chromosomes 14 and 17. Alternative splicing results in multiple transcript variants.,RAP1A,C21KG,G-22K,KREV-1,KREV1,RAP1,SMGP21,Signal Transduction,G protein signaling,Signal Transduction,G2/M DNA Damage Checkpoint,MAPK-Erk Signaling Pathway,Immunology &amp; Inflammation,B Cell Receptor Signaling Pathway,RAP1A</p>
Molecular Weight:	20 kDa
Gene ID:	5906
UniProt:	<a href="#">P62834</a>
Pathways:	<a href="#">TCR Signaling</a> , <a href="#">Neurotrophin Signaling Pathway</a> , <a href="#">Signaling of Hepatocyte Growth Factor Receptor</a>

## Application Details

Application Notes:	WB,1:500 - 1:2000,IHC,1:50 - 1:100,IF,1:50 - 1:100
Restrictions:	For Research Use only

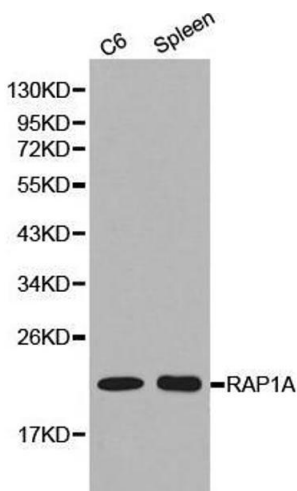
## Handling

Format:	Liquid
Buffer:	PBS with 0.02 % sodium azide,50 % glycerol, pH 7.3.
Preservative:	Sodium azide
Precaution of Use:	This product contains Sodium azide: a POISONOUS AND HAZARDOUS SUBSTANCE which should be handled by trained staff only.
Handling Advice:	Avoid freeze / thaw cycles
Storage:	-20 °C
Storage Comment:	Store at -20°C. Avoid freeze / thaw cycles.



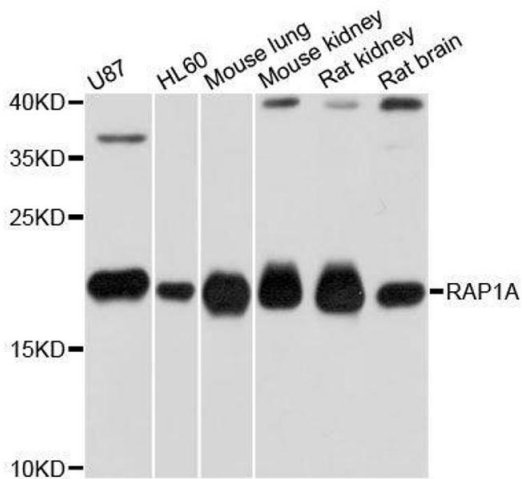
### Immunohistochemistry

**Image 1.** Immunohistochemistry of paraffin-embedded human colon carcinoma using Rap1A antibody (ABIN3021199, ABIN3021200, ABIN3021201 and ABIN6214062) at dilution of 1:100 (40x lens). Perform microwave antigen retrieval with 10 mM PBS buffer pH 7.2 before commencing with IHC staining protocol.



### Western Blotting

**Image 2.** Western blot analysis of C6 cell and spleen cell lysate using RAP1A antibody.



### Western Blotting

**Image 3.** Western blot analysis of extracts of various cell lines, using RAP1A antibody.

Please check the [product details page](#) for more images. Overall 5 images are available for ABIN3021200.