



[Go to Product page](#)

Datasheet for ABIN3021214
anti-MYD88 antibody (AA 60-309)

4 Images

Overview

Quantity:	100 µL
Target:	MYD88
Binding Specificity:	AA 60-309
Reactivity:	Human
Host:	Rabbit
Clonality:	Polyclonal
Application:	Western Blotting (WB), Immunofluorescence (IF)

Product Details

Immunogen:	Recombinant fusion protein containing a sequence corresponding to amino acids 60-309 of human MyD88 (NP_002459.2).
Sequence:	WTALAEEMDF EYLEIRQLET QADPTGRLLD AWQGRPGASV GRLLLELLTKL GRDDVLLLELG PSIEEDCQKY ILKQQQEEAE KPLQVAAVDS SVPRTAELAG ITTLDDPLGH MPERFDAFIC YCPSDIQFVQ EMIRQLEQTN YRLKLCVSDR DVLPGTCVWS IASELIEKRC RRMVVVVSDD YLQSKECDFQ TKFALSLSPG AHQKRLIPIK YKAMKKEFPS ILRFITVCDY TNPCTKSWFW TRLAKALSLP
Isotype:	IgG
Cross-Reactivity:	Human, Mouse, Rat
Characteristics:	Polyclonal Antibodies
Purification:	Affinity purification

Target Details

Target:	MYD88
Alternative Name:	MYD88 (MYD88 Products)
Background:	<p>This gene encodes a cytosolic adapter protein that plays a central role in the innate and adaptive immune response. This protein functions as an essential signal transducer in the interleukin-1 and Toll-like receptor signaling pathways. These pathways regulate that activation of numerous proinflammatory genes. The encoded protein consists of an N-terminal death domain and a C-terminal Toll-interleukin1 receptor domain. Patients with defects in this gene have an increased susceptibility to pyogenic bacterial infections. Alternate splicing results in multiple transcript variants.,MYD88,MYD88D,myeloid differentiation primary response 88,MyD88,Signal Transduction,Immunology & Inflammation,NF-kB Signaling Pathway,Toll-like Receptor Signaling Pathway,Cell Intrinsic Innate Immunity Signaling Pathway,TLR Signaling,Cardiovascular,MYD88</p>
Molecular Weight:	15 kDa/20 kDa/28 kDa/31 kDa/33 kDa/34 kDa
Gene ID:	4615
UniProt:	Q99836
Pathways:	NF-kappaB Signaling , TLR Signaling , Neurotrophin Signaling Pathway , Activation of Innate immune Response , Cellular Response to Molecule of Bacterial Origin , Positive Regulation of Immune Effector Process , Production of Molecular Mediator of Immune Response , Toll-Like Receptors Cascades

Application Details

Application Notes:	WB,1:500 - 1:2000,IF,1:50 - 1:200
Restrictions:	For Research Use only

Handling

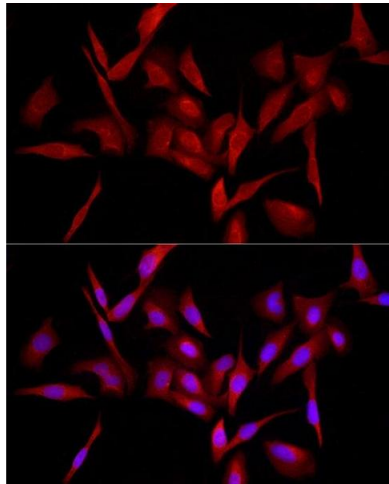
Format:	Liquid
Buffer:	PBS with 0.02 % sodium azide,50 % glycerol, pH 7.3.
Preservative:	Sodium azide
Precaution of Use:	This product contains Sodium azide: a POISONOUS AND HAZARDOUS SUBSTANCE which should be handled by trained staff only.
Handling Advice:	Avoid freeze / thaw cycles

Handling

Storage: -20 °C

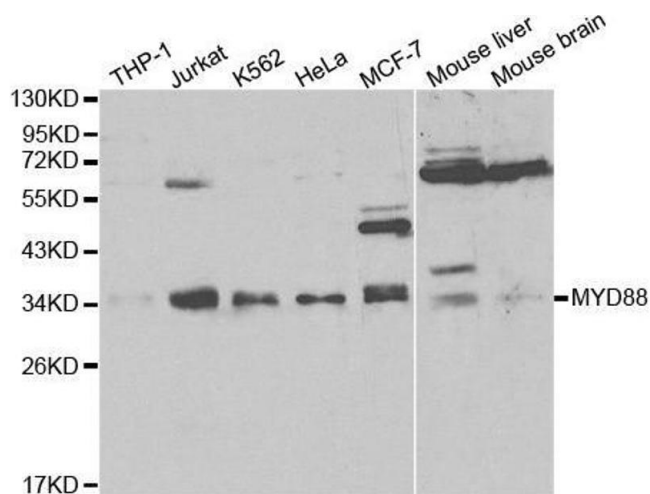
Storage Comment: Store at -20°C. Avoid freeze / thaw cycles.

Images



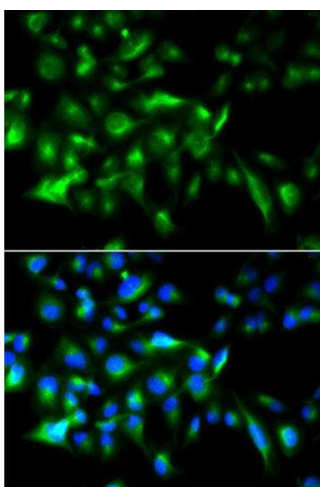
Immunofluorescence

Image 1. Immunofluorescence analysis of U2OS cells using MyD88 Rabbit pAb (ABIN3021213, ABIN3021214, ABIN3021215, ABIN1513232 and ABIN6214069) at dilution of 1:100 (40x lens). Blue: DAPI for nuclear staining.



Western Blotting

Image 2. Western blot analysis of extracts of various cell lines, using MYD88 antibody.



Immunofluorescence

Image 3. Immunofluorescence analysis of HeLa cell using MYD88 antibody. Blue: DAPI for nuclear staining.

Please check the [product details page](#) for more images. Overall 4 images are available for ABIN3021214.