

Datasheet for ABIN3021247
anti-TLR7 antibody (AA 30-230)

6 Images

[Go to Product page](#)

Overview

Quantity:	100 µL
Target:	TLR7
Binding Specificity:	AA 30-230
Reactivity:	Human
Host:	Rabbit
Clonality:	Polyclonal
Conjugate:	This TLR7 antibody is un-conjugated
Application:	Western Blotting (WB), Immunofluorescence (IF)

Product Details

Immunogen:	Recombinant fusion protein containing a sequence corresponding to amino acids 30-230 of human TLR7 (NP_057646.1).
Sequence:	FPKTLPCDVT LDVPKNHVIV DCTDKHLTEI PGGIPTNTTN LTLTINHIPD ISPASFHRLD HLVEIDFRCN CVPIPLGSKN NMCIKRLQIK PRSFSGLTYL KSLYLDGNQL LEIPQGLPPS LQLLSLEANN IFSIRKENLT ELANIEILYL GQNCYYRNP YVSYSIEKDA FLNLTKLKV L SLKDNNVTAV PTVLPSTL TE L
Isotype:	IgG
Cross-Reactivity:	Human, Mouse, Rat
Characteristics:	Polyclonal Antibodies

Target Details

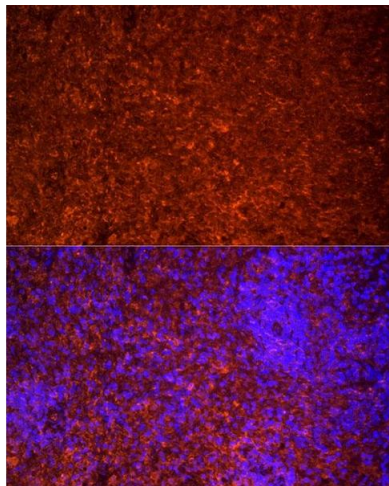
Target:	TLR7
Alternative Name:	TLR7 (TLR7 Products)
Background:	<p>The protein encoded by this gene is a member of the Toll-like receptor (TLR) family which plays a fundamental role in pathogen recognition and activation of innate immunity. TLRs are highly conserved from Drosophila to humans and share structural and functional similarities. They recognize pathogen-associated molecular patterns (PAMPs) that are expressed on infectious agents, and mediate the production of cytokines necessary for the development of effective immunity. The various TLRs exhibit different patterns of expression. This gene is predominantly expressed in lung, placenta, and spleen, and lies in close proximity to another family member, TLR8, on chromosome X.,TLR7,TLR7-like,Epigenetics & Nuclear Signaling,Signal Transduction,Immunology & Inflammation,NF-kB Signaling Pathway,Toll-like Receptor Signaling Pathway,Cell Intrinsic Innate Immunity Signaling Pathway,TLR Signaling,TLR7</p>
Molecular Weight:	120 kDa
Gene ID:	51284
UniProt:	Q9NYK1
Pathways:	TLR Signaling , Activation of Innate immune Response , Toll-Like Receptors Cascades

Application Details

Application Notes:	WB,1:500 - 1:2000,IF,1:50 - 1:200
Restrictions:	For Research Use only

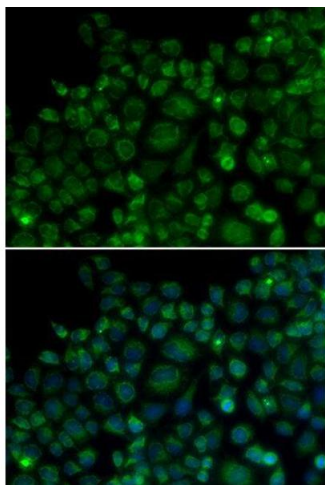
Handling

Format:	Liquid
Buffer:	PBS with 0.02 % sodium azide,50 % glycerol, pH 7.3.
Preservative:	Sodium azide
Precaution of Use:	This product contains Sodium azide: a POISONOUS AND HAZARDOUS SUBSTANCE which should be handled by trained staff only.
Handling Advice:	Avoid freeze / thaw cycles
Storage:	-20 °C
Storage Comment:	Store at -20°C. Avoid freeze / thaw cycles.



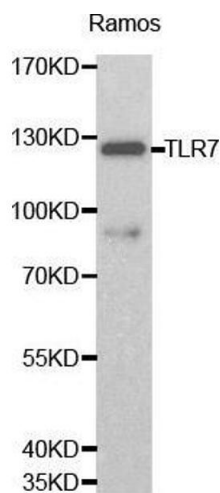
Immunofluorescence

Image 1. Immunofluorescence analysis of rat spleen cells using TLR7 Rabbit pAb (ABIN3021246, ABIN3021247, ABIN3021248 and ABIN6214083) at dilution of 1:25 (40x lens). Blue: DAPI for nuclear staining.



Immunofluorescence

Image 2. Immunofluorescence analysis of MCF7 cell using TLR7 antibody. Blue: DAPI for nuclear staining.



Western Blotting

Image 3. Western blot analysis of Ramos cell lysate using TLR7 antibody.

Please check the [product details page](#) for more images. Overall 6 images are available for ABIN3021247.