

Datasheet for ABIN3021288  
**anti-KRT8 antibody (AA 1-483)**



[Go to Product page](#)

8 Images

Overview

Quantity:	100 µL
Target:	KRT8
Binding Specificity:	AA 1-483
Reactivity:	Human
Host:	Rabbit
Clonality:	Polyclonal
Conjugate:	This KRT8 antibody is un-conjugated
Application:	Western Blotting (WB), Immunofluorescence (IF), Immunohistochemistry (IHC)

Product Details

Immunogen:	Recombinant fusion protein containing a sequence corresponding to amino acids 1-483 of human Cytokeratin 8 (NP_002264.1).
Sequence:	MSIRVTQKSY KVSTSGPRAF SRSYTSVSGPG SRISSSSFSR VGSSNFRGGL GGGYGGASGM GGITAVTVNQ SLLSPLVLEV DPNIQAVRTQ EKEQIKTLNN KFASFIDKVR FLEQQNKMLE TKWSLLQQQK TARSNMDNMF ESYINNLRQ LETLGQEKLK LEAELGNMQG LVEDFKNKYE DEINKRTEME NEFVLIKKDV DEAYMNKVEL ESRLEGLTDE INFLRQLYEE EIRELQSQIS DTSVLSMDN SRSLDMSII AEVKAQYEDI ANRSRAEAE MYQIKYEELQ SLAGKHGDDL RRTKTEISEM NRNISRLQAE IEGKLGQRAS LEAAIADAEQ RGELAIKDAN AKLSELEAAL QRAKQDMARQ LREYQELMNV KLALDIEIAT YRKLLEGEES RLESGMQNMS IHTKTTSGYA GGLSSAYGGL TSPGLSYSLG SSFGSGAGSS SFSRTSSSRA VVVKKIETRD GKLVSSESDV LPK
Isotype:	IgG

## Product Details

---

Cross-Reactivity: Human, Mouse, Rat

Characteristics: Polyclonal Antibodies

## Target Details

---

Target: KRT8

Alternative Name: KRT8 ([KRT8 Products](#))

Background: This gene is a member of the type II keratin family clustered on the long arm of chromosome 12. Type I and type II keratins heteropolymerize to form intermediate-sized filaments in the cytoplasm of epithelial cells. The product of this gene typically dimerizes with keratin 18 to form an intermediate filament in simple single-layered epithelial cells. This protein plays a role in maintaining cellular structural integrity and also functions in signal transduction and cellular differentiation. Mutations in this gene cause cryptogenic cirrhosis. Alternatively spliced transcript variants have been found for this gene.,KRT8,CARD2,CK-8,CK8,CYK8,K2C8,K8,KO,keratin 8,Cancer,Invasion and Metastasis,Signal Transduction,Cell Biology & Developmental Biology,Cell Adhesion,Cytoskeleton,Intermediate Filaments,KRT8

Molecular Weight: 53 kDa/56 kDa

Gene ID: 3856

UniProt: [P05787](#)

## Application Details

---

Application Notes: WB,1:500 - 1:2000,IHC,1:50 - 1:200,IF,1:50 - 1:200

Restrictions: For Research Use only

## Handling

---

Format: Liquid

Buffer: PBS with 0.02 % sodium azide,50 % glycerol, pH 7.3.

Preservative: Sodium azide

Precaution of Use: This product contains Sodium azide: a POISONOUS AND HAZARDOUS SUBSTANCE which should be handled by trained staff only.

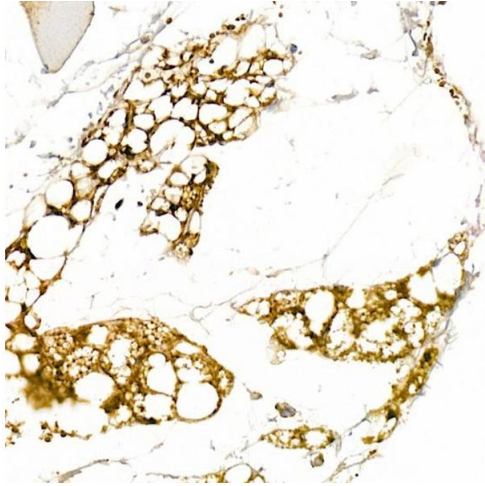
Handling Advice: Avoid freeze / thaw cycles

## Handling

Storage: -20 °C

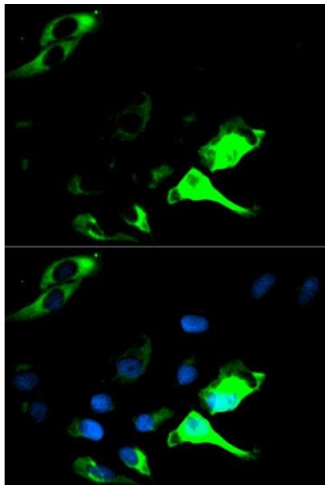
Storage Comment: Store at -20°C. Avoid freeze / thaw cycles.

## Images



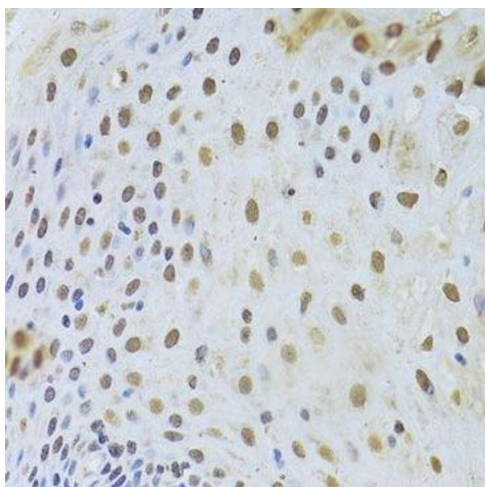
### Immunohistochemistry

**Image 1.** Immunohistochemistry of paraffin-embedded human liver using [KO Validated] Cytokeratin 8 Rabbit pAb (ABIN3021287, ABIN3021288, ABIN3021289, ABIN1513142 and ABIN1514287) at dilution of 1:50 (40x lens). Perform high pressure antigen retrieval with 10 mM citrate buffer pH 6.0 before commencing with IHC staining protocol.



### Immunofluorescence

**Image 2.** Immunofluorescence analysis of HeLa cell using KRT8 antibody. Blue: DAPI for nuclear staining.



### Immunohistochemistry (Paraffin-embedded Sections)

**Image 3.** Immunohistochemistry of paraffin-embedded human esophagus using KRT8 Antibody.

Please check the [product details page](#) for more images. Overall 8 images are available for ABIN3021288.