

Datasheet for ABIN3021309
anti-Hexokinase 1 antibody (AA 20-300)



[Go to Product page](#)

8 Images

Overview

Quantity:	100 µL
Target:	Hexokinase 1 (HK1)
Binding Specificity:	AA 20-300
Reactivity:	Human
Host:	Rabbit
Clonality:	Polyclonal
Conjugate:	This Hexokinase 1 antibody is un-conjugated
Application:	Western Blotting (WB), Immunohistochemistry (IHC), Immunofluorescence (IF), Immunoprecipitation (IP)

Product Details

Immunogen:	Recombinant fusion protein containing a sequence corresponding to amino acids 20-300 of human HK1 (NP_000179.2).
Sequence:	KKIDKYLAM RLSDETLIDI MTRFRKEMKN GLSRDFNPTA TVKMLPTFVR SIPDGSEKGD FIALDLGGSS FRILRVQVNH EKNQNVHMES EYDTPENIV HGSGSQLFDH VAELGDFME KRKIKDKKLP VGFTFSFPCQ QSKIDEAILI TWTKRFKASG VEGADVVKLL NKAIKKRGDY DANIVAVVND TVGTMTCGY DDQHCEVGLI IGTGTNACYM EELRHIDLVE GDEGRMCINT EWGAFGDDGS LEDIRTEFDR EIDRGSLNPG KQLFEKMOVSG M
Isotype:	IgG
Cross-Reactivity:	Human, Mouse, Rat
Characteristics:	Polyclonal Antibodies

Product Details

Purification: Affinity purification

Target Details

Target: Hexokinase 1 (HK1)

Alternative Name: HK1 ([HK1 Products](#))

Background: Hexokinases phosphorylate glucose to produce glucose-6-phosphate, the first step in most glucose metabolism pathways. This gene encodes a ubiquitous form of hexokinase which localizes to the outer membrane of mitochondria. Mutations in this gene have been associated with hemolytic anemia due to hexokinase deficiency. Alternative splicing of this gene results in several transcript variants which encode different isoforms, some of which are tissue-specific. HK1, HK, HK1-ta, HK1-tb, HK1-tc, HKD, HKI, HMSNR, HXK1, hexokinase, RP79, Cancer, Signal Transduction, Endocrine & Metabolism, Carbohydrate metabolism, Warburg Effect, Cardiovascular, Blood, Heart, Cardiac metabolism, HK1

Molecular Weight: 101 kDa/102 kDa

Gene ID: 3098

UniProt: [P19367](#)

Pathways: [Carbohydrate Homeostasis](#), [Warburg Effect](#)

Application Details

Application Notes: WB, 1:500 - 1:2000, IHC, 1:50 - 1:200, IF, 1:50 - 1:200, IP, 1:50 - 1:200

Restrictions: For Research Use only

Handling

Format: Liquid

Buffer: PBS with 0.02 % sodium azide, 50 % glycerol, pH 7.3.

Preservative: Sodium azide

Precaution of Use: This product contains Sodium azide: a POISONOUS AND HAZARDOUS SUBSTANCE which should be handled by trained staff only.

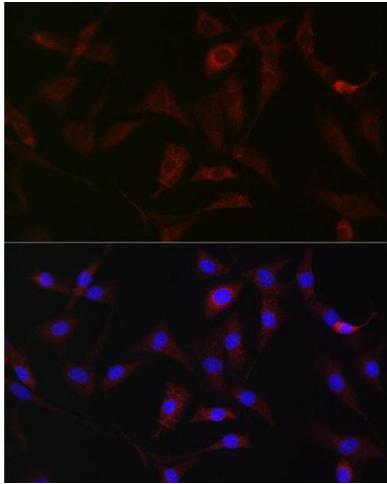
Handling Advice: Avoid freeze / thaw cycles

Storage: -20 °C

Handling

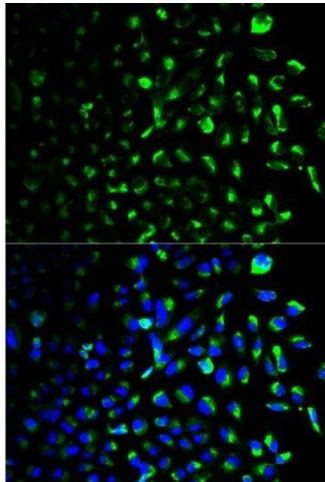
Storage Comment: Store at -20°C. Avoid freeze / thaw cycles.

Images



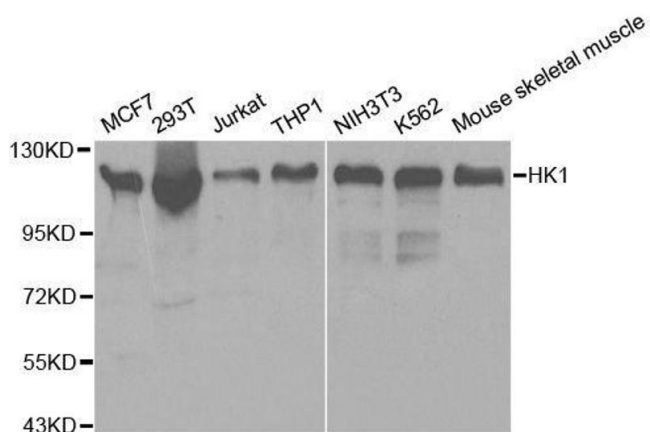
Immunofluorescence

Image 1. Immunofluorescence analysis of NIH/3T3 cells using [KO Validated] HK1 Rabbit pAb (ABIN3021308, ABIN3021309, ABIN3021310 and ABIN6214823) at dilution of 1:50 (40x lens). Blue: DAPI for nuclear staining.



Immunofluorescence

Image 2. Immunofluorescence analysis of U2OS cells using HK1 antibody.



Western Blotting

Image 3. Western blot analysis of extracts of various cell lines, using HK1 antibody.

Please check the [product details page](#) for more images. Overall 8 images are available for ABIN3021309.