

Datasheet for ABIN3021315
anti-MCM2 antibody (AA 360-700)

4 Images

[Go to Product page](#)

Overview

Quantity:	100 µL
Target:	MCM2
Binding Specificity:	AA 360-700
Reactivity:	Human
Host:	Rabbit
Clonality:	Polyclonal
Application:	Western Blotting (WB)

Product Details

Immunogen:	Recombinant fusion protein containing a sequence corresponding to amino acids 360-700 of human MCM2 (NP_004517.2).
Sequence:	PFEVNMEETI YQNYQRIRIQ ESPGKVAAGR LPRSKDAILL ADLVDSCKPG DEIELTGIYH NNYDGSLNTA NGFPVFATVI LANHVAKKDN KVAVGELTDE DVKMITSLSK DQQIGEKIFA SIAPSIYGHE DIKRGLALAL FGGEPKNPGG KHKVRGDINV LLCGDPGTAK SQFLKYIEKV SSRAIFTTGQ GASAVGLTAY VQRHPVSREW TLEAGALVLA DRGVCLIDEF DKMNDQDRTS IHEAMEQQSI SISKAGIVTS LQARCTVIAA ANPIGGRYDP SLTFSENVDL TEPIISRFDI LCVVRD TVDP VQDEMLARFV VGSHVRHHP S NKEEEGLANG S
Isotype:	IgG
Cross-Reactivity:	Human, Mouse
Characteristics:	Polyclonal Antibodies

Target Details

Target:	MCM2
Alternative Name:	MCM2 (MCM2 Products)
Background:	<p>The protein encoded by this gene is one of the highly conserved mini-chromosome maintenance proteins (MCM) that are involved in the initiation of eukaryotic genome replication. The hexameric protein complex formed by MCM proteins is a key component of the pre-replication complex (pre_RC) and may be involved in the formation of replication forks and in the recruitment of other DNA replication related proteins. This protein forms a complex with MCM4, 6, and 7, and has been shown to regulate the helicase activity of the complex. This protein is phosphorylated, and thus regulated by, protein kinases CDC2 and CDC7. Multiple alternatively spliced transcript variants have been found, but the full-length nature of some variants has not been defined.,MCM2,BM28,CCNL1,CDCL1,D3S3194,DFNA70,MITOTIN,cdc19,Epigenetics & Nuclear Signaling,Cell Biology & Developmental Biology,Cell Cycle,Centrosome,Stem Cells,MCM2</p>
Molecular Weight:	101 kDa
Gene ID:	4171
UniProt:	P49736
Pathways:	DNA Damage Repair , Mitotic G1-G1/S Phases , DNA Replication , Chromatin Binding , Synthesis of DNA

Application Details

Application Notes:	WB,1:500 - 1:2000
Restrictions:	For Research Use only

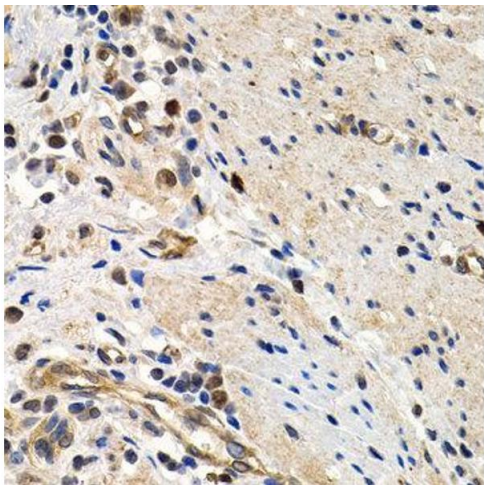
Handling

Format:	Liquid
Buffer:	PBS with 0.02 % sodium azide,50 % glycerol, pH 7.3.
Preservative:	Sodium azide
Precaution of Use:	This product contains Sodium azide: a POISONOUS AND HAZARDOUS SUBSTANCE which should be handled by trained staff only.
Handling Advice:	Avoid freeze / thaw cycles
Storage:	-20 °C

Handling

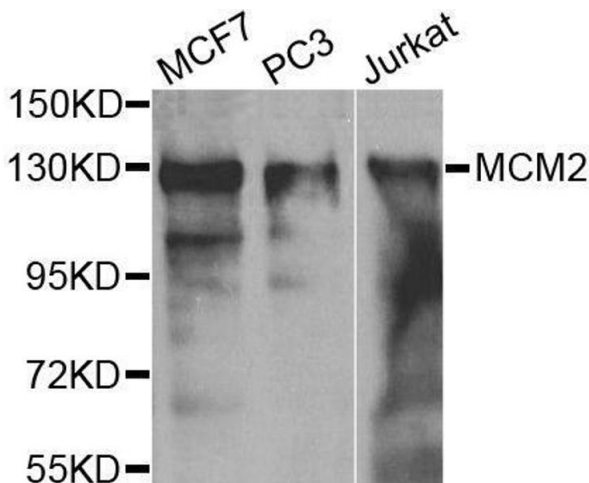
Storage Comment: Store at -20°C. Avoid freeze / thaw cycles.

Images



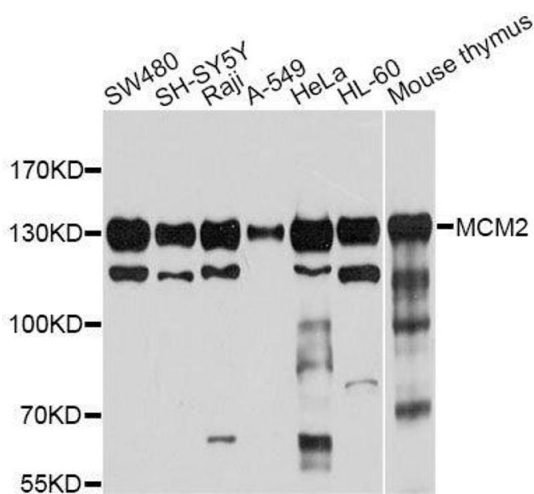
Immunohistochemistry

Image 1.



Western Blotting

Image 2. Western blot analysis of extracts of various cell lines, using MCM2 antibody.



Western Blotting

Image 3. Western blot analysis of extracts of various cell lines, using MCM2 antibody.

Please check the [product details page](#) for more images. Overall 4 images are available for ABIN3021315.