

Datasheet for ABIN302132

**anti-Lactate Dehydrogenase C antibody (AA 217-231)**[Go to Product page](#)**2** Images

## Overview

|                      |                                                          |
|----------------------|----------------------------------------------------------|
| Quantity:            | 100 µg                                                   |
| Target:              | Lactate Dehydrogenase C (LDHC)                           |
| Binding Specificity: | AA 217-231                                               |
| Reactivity:          | Mouse                                                    |
| Host:                | Goat                                                     |
| Clonality:           | Polyclonal                                               |
| Conjugate:           | This Lactate Dehydrogenase C antibody is un-conjugated   |
| Application:         | Western Blotting (WB), ELISA, Immunohistochemistry (IHC) |

## Product Details

|                   |                                                                                                                                       |
|-------------------|---------------------------------------------------------------------------------------------------------------------------------------|
| Purpose:          | LDHC (aa 217 - 231)                                                                                                                   |
| Immunogen:        | C-KLGTDSKDKEHWKNIH                                                                                                                    |
| Sequence:         | KLGTDSKDEH WKNIH                                                                                                                      |
| Isotype:          | IgG                                                                                                                                   |
| Specificity:      | Both variants represent identical product (NP_002292.1 and NP_059144.1).                                                              |
| Cross-Reactivity: | Human, Mouse                                                                                                                          |
| Purification:     | Purified from goat serum by ammonium sulphate precipitation followed by antigen affinity chromatography using the immunizing peptide. |
| Grade:            | Verified                                                                                                                              |

## Target Details

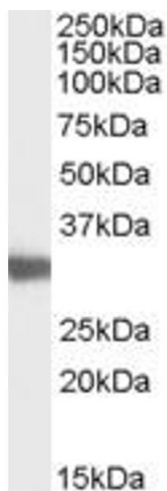
|                   |                                                                                      |
|-------------------|--------------------------------------------------------------------------------------|
| Target:           | Lactate Dehydrogenase C (LDHC)                                                       |
| Alternative Name: | LDHC ( <a href="#">LDHC Products</a> )                                               |
| Background:       | LDHC, MGC111073, lactate dehydrogenase C, LDH3, LDHX                                 |
| Gene ID:          | 3948, 16833                                                                          |
| NCBI Accession:   | <a href="#">NP_002292</a> , <a href="#">NP_059144</a>                                |
| Pathways:         | <a href="#">Ribonucleoside Biosynthetic Process</a> , <a href="#">Warburg Effect</a> |

## Application Details

|                    |                                                                                                                                                                                                                                                                                                                                                                                                                                                                                                                                                                                      |
|--------------------|--------------------------------------------------------------------------------------------------------------------------------------------------------------------------------------------------------------------------------------------------------------------------------------------------------------------------------------------------------------------------------------------------------------------------------------------------------------------------------------------------------------------------------------------------------------------------------------|
| Application Notes: | <p>Immunohistochemistry: In paraffin embedded Mouse Testis shows strong signal in seminiferous tubules of Mouse Testis. Recommended concentration, 1-2 µg/mL. This antibody has been successfully used in IHC on Mouse, PMID: 36464740.</p> <p>Western Blot: Approx 30-35 kDa band observed in Mouse Testis lysates (calculated MW of 36.6 kDa according to human NP_002292.1 and 35.9 kDa according to mouse NP_038608.1). Recommended concentration: 0.03-0.1 µg/mL. This antibody has been successfully used</p> <p>Peptide ELISA: antibody detection limit dilution 1:16000.</p> |
| Restrictions:      | For Research Use only                                                                                                                                                                                                                                                                                                                                                                                                                                                                                                                                                                |

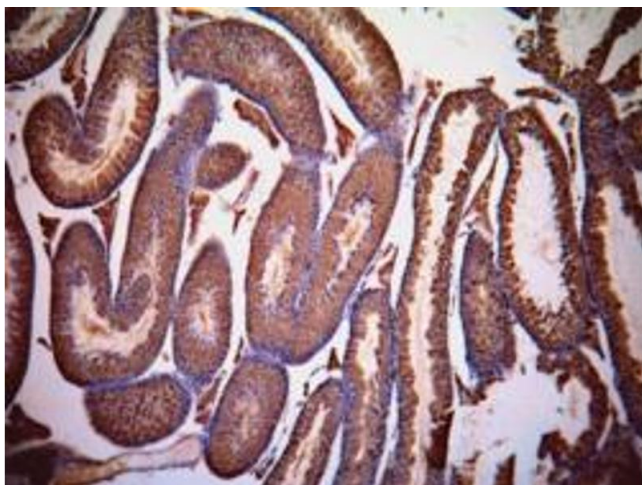
## Handling

|                    |                                                                                                                                                |
|--------------------|------------------------------------------------------------------------------------------------------------------------------------------------|
| Format:            | Liquid                                                                                                                                         |
| Concentration:     | 0.5 mg/mL                                                                                                                                      |
| Buffer:            | Supplied at 0.5 mg/mL in Tris saline, 0.02 % sodium azide, pH 7.3 with 0.5 % bovine serum albumin.                                             |
| Preservative:      | Sodium azide                                                                                                                                   |
| Precaution of Use: | This product contains Sodium azide: a POISONOUS AND HAZARDOUS SUBSTANCE which should be handled by trained staff only.                         |
| Handling Advice:   | Minimize freezing and thawing.                                                                                                                 |
| Storage:           | -20 °C                                                                                                                                         |
| Storage Comment:   | Aliquot and store at -20°C, with minimal freeze/thawing. A working aliquot may be refrigerated at 4°C for a few weeks and still remain viable. |



#### Western Blotting

**Image 1.** ABIN302132 (0.03µg/ml) staining of Mouse Testis lysate (35µg protein in RIPA buffer). Primary incubation was 1 hour. Detected by chemiluminescence.



#### Immunohistochemistry

**Image 2.** ABIN302132 (1µg/ml) staining of paraffin embedded Mouse Testis. Data kindly provided by Dr. Erwin Goldberg, Northwestern University, Evanston, IL USA.