



[Go to Product page](#)

Datasheet for ABIN3021324
anti-GBL antibody (AA 1-326)

4 Images

Overview

Quantity:	100 µL
Target:	GBL
Binding Specificity:	AA 1-326
Reactivity:	Human
Host:	Rabbit
Clonality:	Polyclonal
Conjugate:	This GBL antibody is un-conjugated
Application:	Western Blotting (WB)

Product Details

Immunogen:	Recombinant fusion protein containing a sequence corresponding to amino acids 1-326 of human MLST8 (NP_001186103.1).
Sequence:	MNTSPGTVGS DPVILATAGY DHTVRFWQAH SGICTRTVQH QDSQVNALEV TPDRSMIAAA GYQHIRMVYDL NSNNPNPIIS YDGVNKNIAS VGFHEDGRWM YTGGEDCTAR IWDLRSRNLQ CQRIFQVNAP INCVCLHPNQ AELIVGDQSG AIHIWDLKTD HNEQLIPEPE VSITSAHIDP DASYMAAVNS TGNCYVWNLT GGIGDEVTQL IPKTKIPAHT RYALQCRFSP DSTLLATCSA DQTCKIWRTS NFSLMTELSI KSGNPGESSR GMMWGCAFSG DSQYIVTASS DNLARLWCVE TGEIKREYGG HQKAVVCLAF NDSVLG
Isotype:	IgG
Cross-Reactivity:	Human, Mouse, Rat
Characteristics:	Polyclonal Antibodies

Target Details

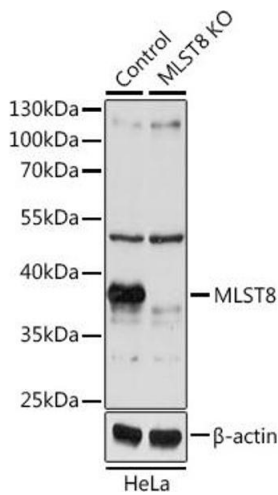
Target:	GBL
Alternative Name:	MLST8 (GBL Products)
Background:	MLST8,GBL,GbetaL,LST8,POP3,WAT1,Epigenetics & Nuclear Signaling,Translation Control,Regulation of eIF4 and p70 S6 Kinase,Signal Transduction,G protein signaling,Signal Transduction,PI3K-Akt Signaling Pathway,mTOR Signaling Pathway,Cell Biology & Developmental Biology,Autophagy,Endocrine & Metabolism,AMPK Signaling Pathway,Insulin Receptor Signaling Pathway,Immunology & Inflammation,T Cell Receptor Signaling Pathway,Regulators,MLST8
Molecular Weight:	23 kDa/28 kDa/35 kDa
Gene ID:	64223
UniProt:	Q9BVC4
Pathways:	PI3K-Akt Signaling , RTK Signaling , Fc-epsilon Receptor Signaling Pathway , EGFR Signaling Pathway , Neurotrophin Signaling Pathway , Regulation of Actin Filament Polymerization , Autophagy , CXCR4-mediated Signaling Events , BCR Signaling , Warburg Effect

Application Details

Application Notes:	WB,1:500 - 1:2000
Restrictions:	For Research Use only

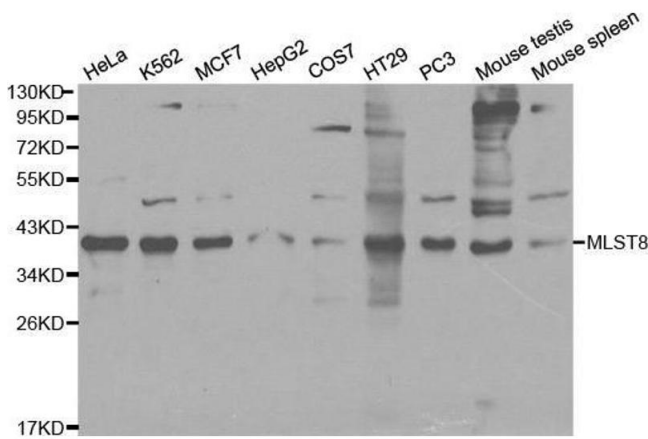
Handling

Format:	Liquid
Buffer:	PBS with 0.02 % sodium azide,50 % glycerol, pH 7.3.
Preservative:	Sodium azide
Precaution of Use:	This product contains Sodium azide: a POISONOUS AND HAZARDOUS SUBSTANCE which should be handled by trained staff only.
Handling Advice:	Avoid freeze / thaw cycles
Storage:	-20 °C
Storage Comment:	Store at -20°C. Avoid freeze / thaw cycles.



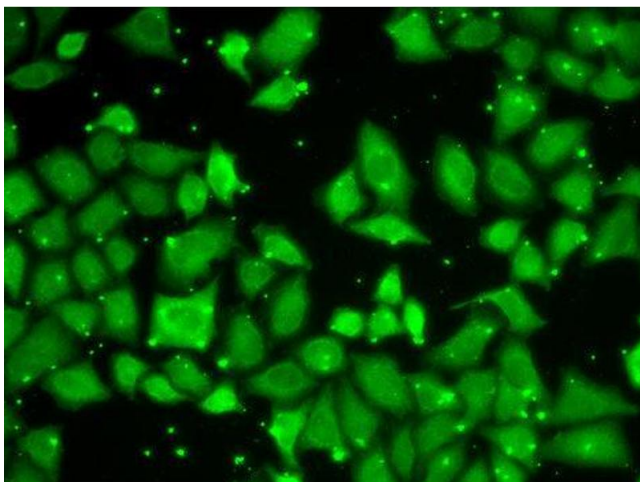
Western Blotting

Image 1. Western blot analysis of extracts from normal (control) and MLST8 knockout (KO) HeLa cells, using MLST8 antibody (ABIN3021323, ABIN3021324, ABIN3021325 and ABIN1513207) at 1:1000 dilution. Secondary antibody: HRP Goat Anti-Rabbit IgG (H+L) (ABIN1684268 and ABIN3020597) at 1:10000 dilution. Lysates/proteins: 25 µg per lane. Blocking buffer: 3 % nonfat dry milk in TBST. Detection: ECL Basic Kit (RM00020). Exposure time: 5s.



Western Blotting

Image 2. Western blot analysis of extracts of various cell lines, using MLST8 antibody.



Immunofluorescence

Image 3.

Please check the [product details page](#) for more images. Overall 4 images are available for ABIN3021324.