

Datasheet for ABIN3021327
anti-MCM3 antibody (AA 1-295)

7 Images

[Go to Product page](#)

Overview

Quantity:	100 µL
Target:	MCM3
Binding Specificity:	AA 1-295
Reactivity:	Human
Host:	Rabbit
Clonality:	Polyclonal
Conjugate:	This MCM3 antibody is un-conjugated
Application:	Western Blotting (WB), Immunoprecipitation (IP)

Product Details

Immunogen:	Recombinant fusion protein containing a sequence corresponding to amino acids 1-295 of human MCM3 (NP_002379.2).
Sequence:	MAGTVVLDDV ELREAQRDYL DFLDDEEDQG IYQSKVRELI SDNQYRLIVN VNDLRRKNEK RANRLNNAF EELVAFQRAL KDFVASIDAT YAKQYEEFYV GLEGSFGSKH VSPRTLTSCT LSCVVCVEGI VTKCSLVRPK VVRSVHYCPA TKKTIERRY S DLTLVAFPS SSVYPTKDEE NNPLETEYGL SVYKDHQTIT IQEMPEKAPA GQLPRSVDVI LDDDLVDKAK PGDRVQVVG YRCLPGKKGG YTSGETFRTVL IACNVKQMSK DAQPSFSAED IAKIKKFSKT RSKDI
Isotype:	IgG
Cross-Reactivity:	Human, Mouse, Rat
Characteristics:	Polyclonal Antibodies

Target Details

Target:	MCM3
Alternative Name:	MCM3 (MCM3 Products)
Background:	<p>The protein encoded by this gene is one of the highly conserved mini-chromosome maintenance proteins (MCM) that are involved in the initiation of eukaryotic genome replication. The hexameric protein complex formed by MCM proteins is a key component of the pre-replication complex (pre_RC) and may be involved in the formation of replication forks and in the recruitment of other DNA replication related proteins. This protein is a subunit of the protein complex that consists of MCM2-7. It has been shown to interact directly with MCM5/CDC46. This protein also interacts with and is acetylated by MCM3AP, a chromatin-associated acetyltransferase. The acetylation of this protein inhibits the initiation of DNA replication and cell cycle progression. Two transcript variants encoding different isoforms have been found for this gene.,MCM3,HCC5,P1-MCM3,P1.h,RLFB,Epigenetics & Nuclear Signaling,Cell Biology & Developmental Biology,Cell Cycle,Centrosome,MCM3</p>
Molecular Weight:	90 kDa/95 kDa
Gene ID:	4172
UniProt:	P25205
Pathways:	DNA Damage Repair , Mitotic G1-G1/S Phases , DNA Replication , Chromatin Binding , Synthesis of DNA

Application Details

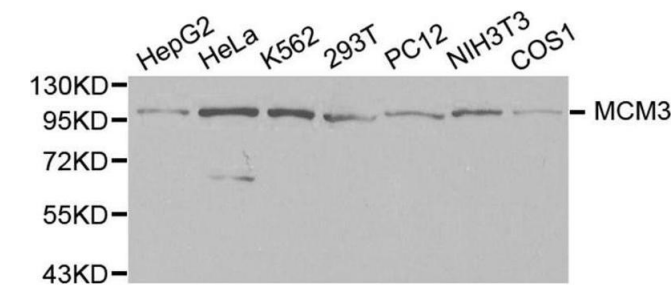
Application Notes:	WB,1:500 - 1:2000,IP,1:50 - 1:200
Restrictions:	For Research Use only

Handling

Format:	Liquid
Buffer:	PBS with 0.02 % sodium azide,50 % glycerol, pH 7.3.
Preservative:	Sodium azide
Precaution of Use:	This product contains Sodium azide: a POISONOUS AND HAZARDOUS SUBSTANCE which should be handled by trained staff only.
Handling Advice:	Avoid freeze / thaw cycles
Storage:	-20 °C

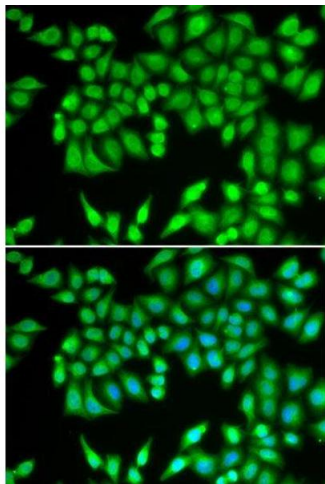
Storage Comment: Store at -20°C. Avoid freeze / thaw cycles.

Images



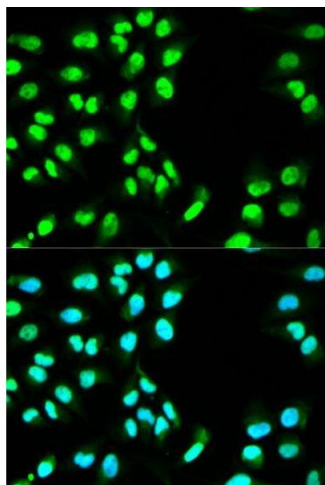
Western Blotting

Image 1. Western blot analysis of extracts of various cell lines, using MCM3 antibody.



Immunofluorescence

Image 2.



Immunofluorescence

Image 3. Immunofluorescence analysis of HeLa cell using MCM3 antibody. Blue: DAPI for nuclear staining.

Please check the [product details page](#) for more images. Overall 7 images are available for ABIN3021327.