



[Go to Product page](#)

Datasheet for ABIN302133

anti-Lactate Dehydrogenase C antibody (AA 221-233)

5 Images

Overview

Quantity:	100 µg
Target:	Lactate Dehydrogenase C (LDHC)
Binding Specificity:	AA 221-233
Reactivity:	Human, Mouse
Host:	Goat
Clonality:	Polyclonal
Conjugate:	This Lactate Dehydrogenase C antibody is un-conjugated
Application:	Western Blotting (WB), ELISA, Immunohistochemistry (IHC)

Product Details

Purpose:	LDHC (aa 221 - 233)
Immunogen:	C-DSDKEHWKKNVHKQ
Sequence:	DSDKEHWKNV HKQ
Isotype:	IgG
Specificity:	Both variants represent identical product (NP_002292.1 and NP_059144.1).
Cross-Reactivity:	Human, Mouse
Purification:	Purified from goat serum by ammonium sulphate precipitation followed by antigen affinity chromatography using the immunizing peptide.
Grade:	Verified

Target Details

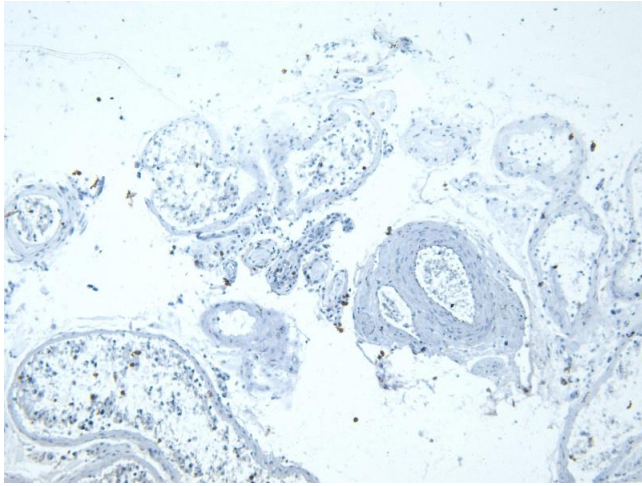
Target:	Lactate Dehydrogenase C (LDHC)
Alternative Name:	LDHC (LDHC Products)
Background:	LDHC, MGC111073, lactate dehydrogenase C, LDH3, LDHX
Gene ID:	3948, 16833
NCBI Accession:	NP_002292 , NP_059144
Pathways:	Ribonucleoside Biosynthetic Process , Warburg Effect

Application Details

Application Notes:	Immunohistochemistry: Paraffin embedded Human Testis. Recommended concentration: 5-6 µg/mL. Western Blot: Approx 35 kDa band observed in Mouse Testis lysates (calculated MW of 35.9 kDa according to Mouse NP_038608.1). Recommended concentration: 0.3-1 µg/mL. Primary incubation was 1 hour. Peptide ELISA: antibody detection limit dilution 1:1000.
Restrictions:	For Research Use only

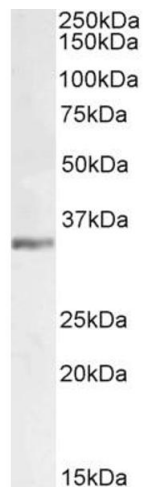
Handling

Format:	Liquid
Concentration:	0.5 mg/mL
Buffer:	Supplied at 0.5 mg/mL in Tris saline, 0.02 % sodium azide, pH 7.3 with 0.5 % bovine serum albumin.
Preservative:	Sodium azide
Precaution of Use:	This product contains Sodium azide: a POISONOUS AND HAZARDOUS SUBSTANCE which should be handled by trained staff only.
Handling Advice:	Minimize freezing and thawing.
Storage:	-20 °C
Storage Comment:	Aliquot and store at -20°C, with minimal freeze/thawing. A working aliquot may be refrigerated at 4°C for a few weeks and still remain viable.



Immunohistochemistry

Image 1. (ABIN302133) Negative Control showing staining of paraffin embedded Human Testis, with no primary antibody.



Western Blotting

Image 2. ABIN302133 (1 μ g/ml) staining of Mouse Testes lysate (35 μ g protein in RIPA buffer). Detected by chemiluminescence.



Image 3. ABIN302133 (0.03 μ g/ml) staining of Mouse Testis lysate (35 μ g protein in RIPA buffer). Primary incubation was 1 hour. Detected by chemiluminescence.

Please check the [product details page](#) for more images. Overall 5 images are available for ABIN302133.