



Datasheet for ABIN3021348
anti-LYZL6 antibody (AA 20-148)



[Go to Product page](#)

2 Images

Overview

Quantity:	100 µL
Target:	LYZL6
Binding Specificity:	AA 20-148
Reactivity:	Human
Host:	Rabbit
Clonality:	Polyclonal
Conjugate:	This LYZL6 antibody is un-conjugated
Application:	Western Blotting (WB)

Product Details

Immunogen:	Recombinant fusion protein containing a sequence corresponding to amino acids 20-148 of human LYZL6 (NP_065159.1).
Sequence:	SLISRCDLAQ VLQLEDLDGF EGYSLSDWLC LAFVESKFNI SKINENADGS FDYGLFQINS HYWCNDYKSY SENLCHVDCQ DLLNPNLLAG IHCAKRIVSG ARGMNNWVEW RLHCSGRPLF YWLTGCRLR
Isotype:	IgG
Cross-Reactivity:	Human
Characteristics:	Polyclonal Antibodies

Target Details

Target:	LYZL6
---------	-------

Target Details

Alternative Name: [LYZL6 \(LYZL6 Products\)](#)

Background: This gene encodes a member of the C-type lysozyme/alpha-lactalbumin family. C-type lysozymes are bacteriolytic factors that play a role in host defense, whereas alpha-lactalbumins mediate lactose biosynthesis. The encoded protein contains catalytic residues characteristic of C-type lysozymes and may play a role in male reproduction. Alternatively spliced transcript variants have been observed for this gene.,LYZL6,HEL-S-6a,LYC1,LYZB,PRO1485,TKAL754,UNQ754,Cell Biology & Developmental Biology,Immunology & Inflammation,Cell Intrinsic Innate Immunity Signaling Pathway,LYZL6

Molecular Weight: 16 kDa

Gene ID: 57151

UniProt: [O75951](#)

Application Details

Application Notes: WB,1:500 - 1:2000

Restrictions: For Research Use only

Handling

Format: Liquid

Buffer: PBS with 0.02 % sodium azide,50 % glycerol, pH 7.3.

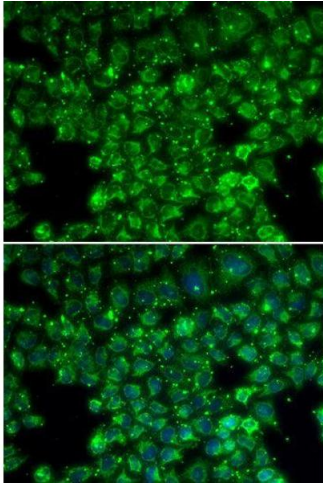
Preservative: Sodium azide

Precaution of Use: This product contains Sodium azide: a POISONOUS AND HAZARDOUS SUBSTANCE which should be handled by trained staff only.

Handling Advice: Avoid freeze / thaw cycles

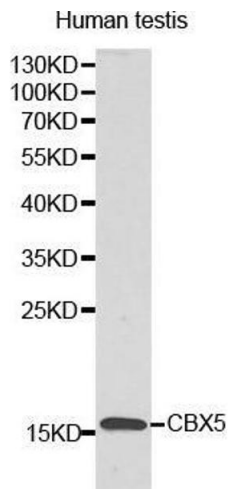
Storage: -20 °C

Storage Comment: Store at -20°C. Avoid freeze / thaw cycles.



Immunofluorescence

Image 1. Immunofluorescence analysis of U2OS cell using LYZL6 antibody. Blue: DAPI for nuclear staining.



Western Blotting

Image 2.