



[Go to Product page](#)

Datasheet for ABIN3021360  
**anti-CSRP1 antibody (AA 1-193)**

4 Images

Overview

Quantity:	100 µL
Target:	CSRP1
Binding Specificity:	AA 1-193
Reactivity:	Human
Host:	Rabbit
Clonality:	Polyclonal
Conjugate:	This CSRP1 antibody is un-conjugated
Application:	Western Blotting (WB), Immunoprecipitation (IP), RNA-Binding Protein Immunoprecipitation (RIP)

Product Details

Immunogen:	Recombinant fusion protein containing a sequence corresponding to amino acids 1-193 of human CSRP1 (NP_004069.1).
Sequence:	MPNWGGGKKC GVCQKTVYFA EEVQCEGNSF HKSCFLCMVC KKNLDSTTVA VHGEIYCKS CYGKKYGPKG YGYGQGAGTL STDKGESLGI KHEEAPGHRP TTNPNASKFA QKIGGSERCP RCSQAVYAAE KVIGAGKSWH KACFRCAKCG KGLESTTLAD KDGEIYCKGC YAKNFGPKGF GFGQGAGALV HSE
Isotype:	IgG
Cross-Reactivity:	Human, Mouse
Characteristics:	Polyclonal Antibodies
Purification:	Affinity purification

## Target Details

---

Target:	CSRP1
Alternative Name:	CSRP1 ( <a href="#">CSRP1 Products</a> )
Background:	<p>This gene encodes a member of the cysteine-rich protein (CSRP) family. This gene family includes a group of LIM domain proteins, which may be involved in regulatory processes important for development and cellular differentiation. The LIM/double zinc-finger motif found in this gene product occurs in proteins with critical functions in gene regulation, cell growth, and somatic differentiation. Alternatively spliced transcript variants have been described.,CSRP1,CRP,CRP1,CSRP,CYRP,D1S181E,HEL-141,HEL-S-286,Epigenetics &amp; Nuclear Signaling,Transcription Factors,RNA Binding,Stem Cells,CSRP1</p>
Molecular Weight:	20 kDa
Gene ID:	1465
UniProt:	<a href="#">P21291</a>

## Application Details

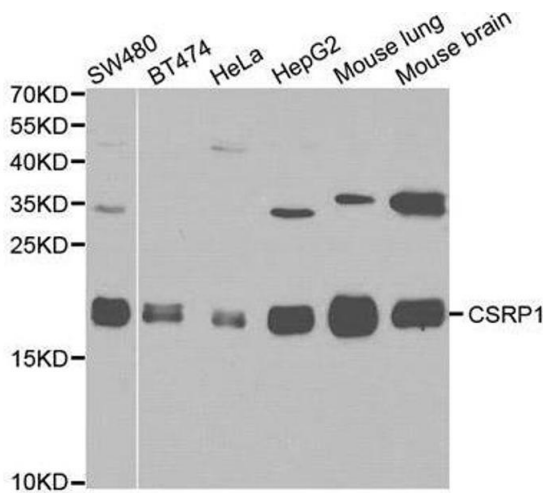
---

Application Notes:	WB,1:500 - 1:2000,IP,1:50 - 1:200,RIP,1:20 - 1:50
Restrictions:	For Research Use only

## Handling

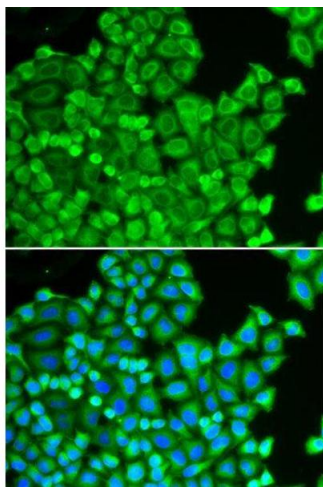
---

Format:	Liquid
Buffer:	PBS with 0.02 % sodium azide,50 % glycerol, pH 7.3.
Preservative:	Sodium azide
Precaution of Use:	This product contains Sodium azide: a POISONOUS AND HAZARDOUS SUBSTANCE which should be handled by trained staff only.
Handling Advice:	Avoid freeze / thaw cycles
Storage:	-20 °C
Storage Comment:	Store at -20°C. Avoid freeze / thaw cycles.



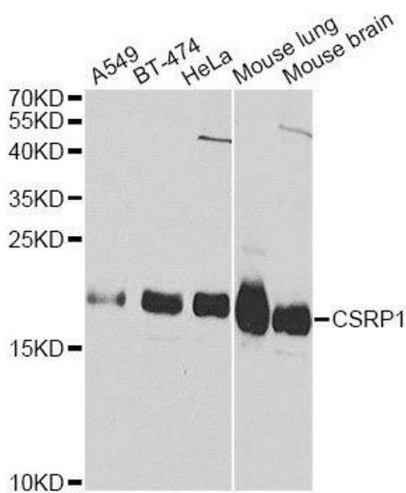
### Western Blotting

**Image 1.** Western blot analysis of various cell lines, using CSRP1 antibody.



### Immunofluorescence

**Image 2.**



### Western Blotting

**Image 3.** Western blot analysis of extracts of various cell lines, using CSRP1 Antibody.

Please check the [product details page](#) for more images. Overall 4 images are available for ABIN3021360.