



Datasheet for ABIN3021366
anti-RNASE13 antibody (AA 1-156)



[Go to Product page](#)

5 Images

Overview

Quantity:	100 µL
Target:	RNASE13
Binding Specificity:	AA 1-156
Reactivity:	Human
Host:	Rabbit
Clonality:	Polyclonal
Conjugate:	This RNASE13 antibody is un-conjugated
Application:	Western Blotting (WB), Immunohistochemistry (IHC)

Product Details

Immunogen:	Recombinant fusion protein containing a sequence corresponding to amino acids 1-156 of human RNASE13 (NP_001012264.1).
Sequence:	MAPAVTRLLF LQLVLGPTLV MDIKMQIGSR NFYTLSIDYP RVNYPKGFRG YCNGLMSYMR GKMQNSDCPK IHYVIHAPWK AIQKFKKYSD SFCENYNEYC TLTQDSLPIIT VCSLSHQPPP TSCYYNSTLT NQKLYLLCSR KYEADPIGIA GLYSGI
Isotype:	IgG
Cross-Reactivity:	Human, Mouse, Rat
Characteristics:	Polyclonal Antibodies

Target Details

Target:	RNASE13
---------	---------

Target Details

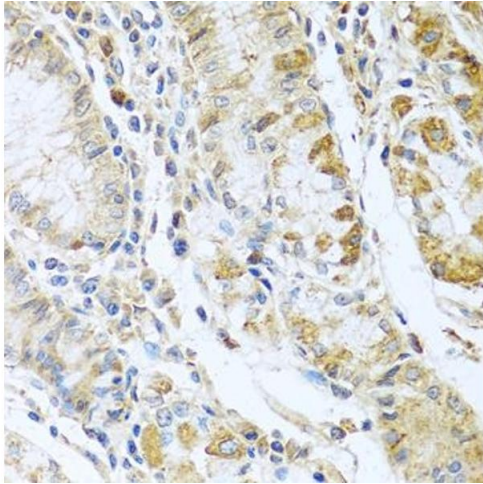
Alternative Name:	RNASE13 (RNASE13 Products)
Background:	Does not exhibit any ribonuclease activity.,RNASE13,HEL-S-86p,RAL1,Epigenetics & Nuclear Signaling,RNASE13
Molecular Weight:	17 kDa
Gene ID:	440163
UniProt:	Q5GAN3

Application Details

Application Notes:	WB,1:500 - 1:2000,IHC,1:100 - 1:200
Restrictions:	For Research Use only

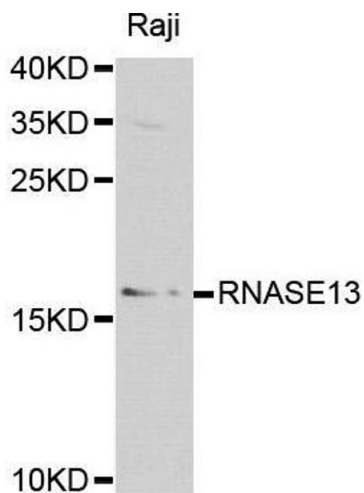
Handling

Format:	Liquid
Buffer:	PBS with 0.02 % sodium azide,50 % glycerol, pH 7.3.
Preservative:	Sodium azide
Precaution of Use:	This product contains Sodium azide: a POISONOUS AND HAZARDOUS SUBSTANCE which should be handled by trained staff only.
Handling Advice:	Avoid freeze / thaw cycles
Storage:	-20 °C
Storage Comment:	Store at -20°C. Avoid freeze / thaw cycles.



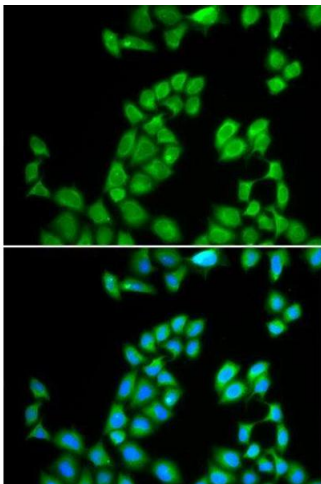
Immunohistochemistry

Image 1. Immunohistochemistry of paraffin-embedded human stomach using RN antibody at dilution of 1:100 (40x lens). Perform microwave antigen retrieval with 10 mM PBS buffer pH 7.2 before commencing with IHC staining protocol.



Western Blotting

Image 2. Western blot analysis of extracts of various cell lines, using RNASE13 antibody.



Immunofluorescence

Image 3. Immunofluorescence analysis of MCF-7 cell using RNASE13 antibody. Blue: DAPI for nuclear staining.

Please check the [product details page](#) for more images. Overall 5 images are available for ABIN3021366.