

Datasheet for ABIN302137

anti-GCH1 antibody (Internal Region)

3 Images



[Go to Product page](#)

Overview

Quantity:	100 µg
Target:	GCH1
Binding Specificity:	Internal Region
Reactivity:	Human
Host:	Goat
Clonality:	Polyclonal
Conjugate:	This GCH1 antibody is un-conjugated
Application:	ELISA, Immunohistochemistry (IHC)

Product Details

Purpose:	GCH1
Immunogen:	Peptide with sequence C-GKVHIGYLPNKQ, from the internal region of the protein sequence according to NP_000152.1 , NP_001019195.1 , NP_001019241.1 , NP_001019242.1 .
Sequence:	GKVHIGYLPN KQ
Isotype:	IgG
Specificity:	This antibody is expected to recognize all four isoforms (NP_000152.1 , NP_001019195.1 , NP_001019241.1 , NP_001019242.1)
Cross-Reactivity:	Human, Mouse, Rat
Purification:	Purified from goat serum by ammonium sulphate precipitation followed by antigen affinity chromatography using the immunizing peptide.

Product Details

Grade: Verified

Target Details

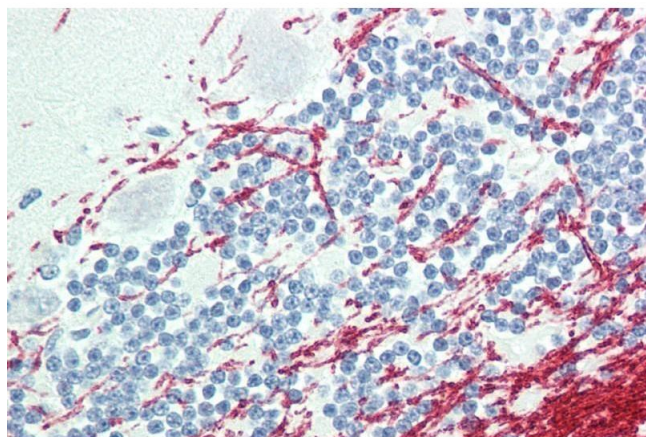
Target:	GCH1
Alternative Name:	GCH1 (GCH1 Products)
Background:	GCH1 , GTP cyclohydrolase 1 (dopa-responsive dystonia) , DYT5, GCH, GTP-CH-1, GTPCH1, GTP cyclohydrolase 1, guanosine 5'-triphosphate cyclohydrolase I
Gene ID:	2643, 14528, 29244
NCBI Accession:	NP_000152 , NP_001019195 , NP_001019241 , NP_001019242

Application Details

Application Notes:	Immunohistochemistry: Paraffin embedded Human Brain (Cerebellum) and Small Intestine. Recommended concentration: 5 µg/mL. Peptide ELISA: antibody detection limit dilution 1:16000.
Restrictions:	For Research Use only

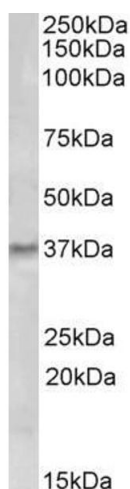
Handling

Format:	Liquid
Concentration:	0.5 mg/mL
Buffer:	Supplied at 0.5 mg/mL in Tris saline, 0.02 % sodium azide, pH 7.3 with 0.5 % bovine serum albumin.
Preservative:	Sodium azide
Precaution of Use:	This product contains Sodium azide: a POISONOUS AND HAZARDOUS SUBSTANCE which should be handled by trained staff only.
Handling Advice:	Minimize freezing and thawing.
Storage:	-20 °C
Storage Comment:	Aliquot and store at -20°C, with minimal freeze/thawing. A working aliquot may be refrigerated at 4°C for a few weeks and still remain viable.



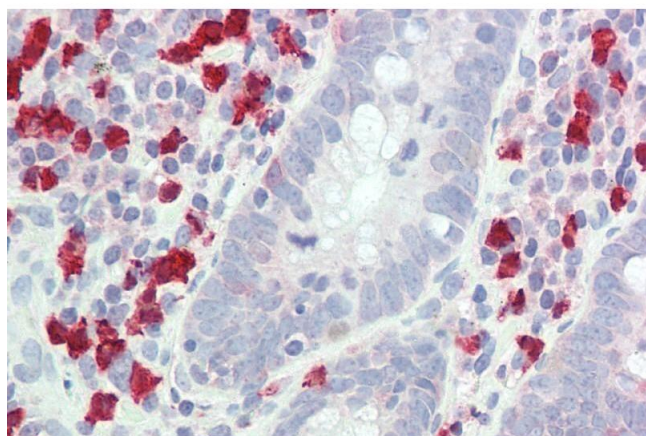
Immunohistochemistry

Image 1. ABIN302137 (5µg/ml) staining of paraffin embedded Human Cerebellum. Steamed antigen retrieval with citrate buffer pH 6, AP-staining.



Western Blotting

Image 2. ABIN302137 (0.5µg/ml) staining of Human Tonsil lysate (35µg protein in RIPA buffer). Detected by chemiluminescence.



Immunohistochemistry

Image 3. ABIN302137 (5µg/ml) staining of paraffin embedded Human Small Intestine. Steamed antigen retrieval with citrate buffer pH 6, AP-staining.