

Datasheet for ABIN3021372
anti-GPX5 antibody (AA 1-100)[Go to Product page](#)

1 Image

Overview

Quantity:	100 µL
Target:	GPX5
Binding Specificity:	AA 1-100
Reactivity:	Human
Host:	Rabbit
Clonality:	Polyclonal
Conjugate:	This GPX5 antibody is un-conjugated
Application:	Western Blotting (WB)

Product Details

Immunogen:	Recombinant fusion protein containing a sequence corresponding to amino acids 1-100 of human GPX5 (NP_003987.2).
Sequence:	MTTQLRVVHL LPLLLACFVQ TSPKQEKMKM DCHKDEKGTI YDYEIALNK NEYVSFKQYV GKHILFVNVA TYCGLTAQYP GMSVQGEDLY LVSSFLRKGM
Isotype:	IgG
Cross-Reactivity:	Human, Mouse, Rat
Characteristics:	Polyclonal Antibodies
Purification:	Affinity purification

Target Details

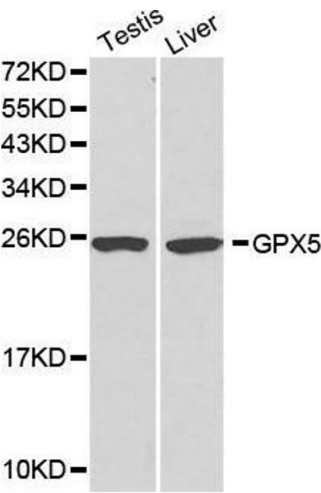
Target:	GPX5
Alternative Name:	GPX5 (GPX5 Products)
Background:	This gene belongs to the glutathione peroxidase family. It is specifically expressed in the epididymis in the mammalian male reproductive tract, and is androgen-regulated. Unlike several other characterized glutathione peroxidases, this enzyme is not a selenoprotein, lacking the selenocysteine residue. Thus, it is selenium-independent, and has been proposed to play a role in protecting the membranes of spermatozoa from the damaging effects of lipid peroxidation and/or preventing premature acrosome reaction. Alternatively spliced transcript variants have been found for this gene.,GPX5,HEL-S-75p,Signal Transduction,Cell Biology & Developmental Biology,Endocrine & Metabolism,Lipid Metabolism,GPX5
Molecular Weight:	11 kDa/25 kDa
Gene ID:	2880
UniProt:	O75715
Pathways:	Thyroid Hormone Synthesis

Application Details

Application Notes:	WB,1:500 - 1:2000
Restrictions:	For Research Use only

Handling

Format:	Liquid
Buffer:	PBS with 0.02 % sodium azide,50 % glycerol, pH 7.3.
Preservative:	Sodium azide
Precaution of Use:	This product contains Sodium azide: a POISONOUS AND HAZARDOUS SUBSTANCE which should be handled by trained staff only.
Handling Advice:	Avoid freeze / thaw cycles
Storage:	-20 °C
Storage Comment:	Store at -20°C. Avoid freeze / thaw cycles.



Western Blotting

Image 1.