

Datasheet for ABIN302138

## anti-GTPase NRas antibody (Internal Region)



[Go to Product page](#)

### 7 Images

#### Overview

Quantity:	100 µg
Target:	GTPase NRas (NRAS)
Binding Specificity:	Internal Region
Reactivity:	Human
Host:	Goat
Clonality:	Polyclonal
Conjugate:	This GTPase NRas antibody is un-conjugated
Application:	Western Blotting (WB), ELISA

#### Product Details

Purpose:	NRAS
Immunogen:	Peptide with sequence C-RMKKLNSSDDGTQ, from the internal region of the protein sequence according to NP_002515.1.
Sequence:	RMKKLNSSDD GTQ
Isotype:	IgG
Cross-Reactivity:	Human, Mouse, Rat
Purification:	Purified from goat serum by ammonium sulphate precipitation followed by antigen affinity chromatography using the immunizing peptide.
Grade:	Verified

## Target Details

Target:	GTPase NRas (NRAS)
Alternative Name:	NRAS ( <a href="#">NRAS Products</a> )
Background:	NRAS , neuroblastoma RAS viral (v-ras) oncogene homolog , N-ras , NRAS1, N-ras protein part 4 , v-ras neuroblastoma RAS viral oncogene homolog
Gene ID:	4893, 18176, 24605
NCBI Accession:	<a href="#">NP_002515</a>
Pathways:	<a href="#">p53 Signaling</a> , <a href="#">MAPK Signaling</a> , <a href="#">RTK Signaling</a> , <a href="#">Fc-epsilon Receptor Signaling Pathway</a> , <a href="#">EGFR Signaling Pathway</a> , <a href="#">Neurotrophin Signaling Pathway</a> , <a href="#">Hepatitis C</a> , <a href="#">Regulation of long-term Neuronal Synaptic Plasticity</a> , <a href="#">VEGF Signaling</a>

## Application Details

Application Notes:	Western Blot: Approx. 21-22 kDa band observed in lysates of cell line MCF7 (calculated MW of 21.2 kDa according to NP_002515.1). Recommended concentration: 0.3-1 µg/mL. Primary incubation 1 hour at room temperature. Peptide ELISA: antibody detection limit dilution 1:64000.
Comment:	<b>Immunofluorescence:</b> A customer obtained weak cytoplasmic staining in MCF7 cells at 10µg/ml.
Restrictions:	For Research Use only

## Handling

Format:	Liquid
Concentration:	0.5 mg/mL
Buffer:	Supplied at 0.5 mg/mL in Tris saline, 0.02 % sodium azide, pH 7.3 with 0.5 % bovine serum albumin.
Preservative:	Sodium azide
Precaution of Use:	This product contains Sodium azide: a POISONOUS AND HAZARDOUS SUBSTANCE which should be handled by trained staff only.
Handling Advice:	Minimize freezing and thawing.
Storage:	-20 °C
Storage Comment:	Aliquot and store at -20°C, with minimal freeze/thawing. A working aliquot may be refrigerated

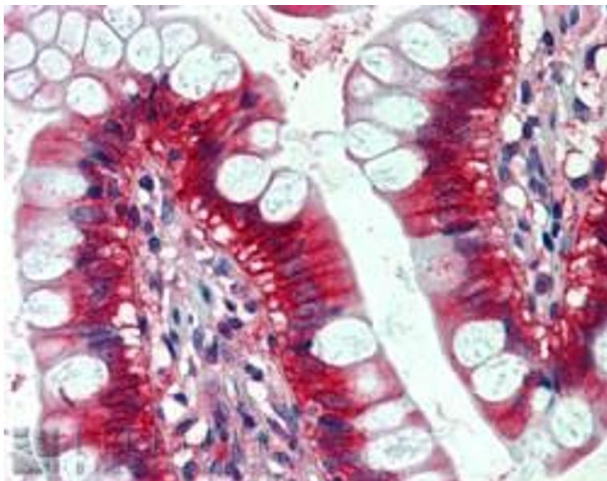
at 4°C for a few weeks and still remain viable.

Images



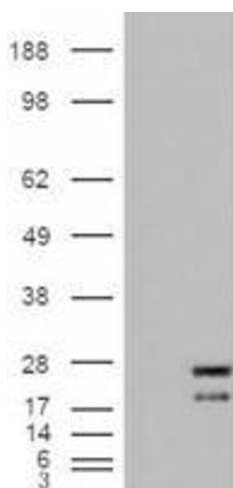
**Immunohistochemistry**

**Image 1.** (ABIN302138) (0.5 µg/mL) staining of MCF7 cell lysate (35 µg protein in RIPA buffer). Detected by chemiluminescence.



**Immunohistochemistry**

**Image 2.** ABIN302138 (2.5µg/ml) staining of paraffin embedded Human Small Intestine. Steamed antigen retrieval with citrate buffer pH 6, AP-staining.



**Western Blotting**

**Image 3.** HEK293 overexpressing NRAS (ABIN5357760) and probed with ABIN302138 (mock transfection in first lane).

Please check the [product details page](#) for more images. Overall 7 images are available for ABIN302138.