

Datasheet for ABIN302142
anti-ABCA5 antibody (Internal Region)[Go to Product page](#)

1 Image

Overview

Quantity:	100 µg
Target:	ABCA5
Binding Specificity:	Internal Region
Reactivity:	Human
Host:	Goat
Clonality:	Polyclonal
Conjugate:	This ABCA5 antibody is un-conjugated
Application:	ELISA, Flow Cytometry (FACS)

Product Details

Purpose:	ABCA5
Immunogen:	Peptide with sequence DYSSETSEDDSLKC, from the internal region of the protein sequence according to NP_758424.1.
Sequence:	DYSSETSEDD DSLKC
Isotype:	IgG
Specificity:	Reported variants represent identical protein: NP_061142.2 and NP_758424.1
Predicted Reactivity:	Human
Purification:	Purified from goat serum by ammonium sulphate precipitation followed by antigen affinity chromatography using the immunizing peptide.
Grade:	Verified

Target Details

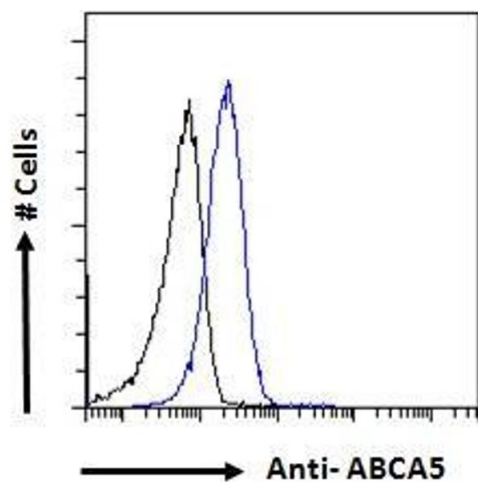
Target:	ABCA5
Alternative Name:	ABCA5 (ABCA5 Products)
Background:	ABCA5, ATP-binding cassette, sub-family A (ABC1), member 5, ABC13, DKFZp451F117, DKFZp779N2435, EST90625, FLJ16381, ATP-binding cassette A5, ATP-binding cassette, sub-family A , member 5
Gene ID:	23461
NCBI Accession:	NP_758424

Application Details

Application Notes:	Peptide ELISA: antibody detection limit dilution 1:1000.
Comment:	Flow Cytometry: Flow cytometric analysis of HepG2 cells. Recommended concentration: 10ug/ml.
Restrictions:	For Research Use only

Handling

Format:	Liquid
Concentration:	0.5 mg/mL
Buffer:	Supplied at 0.5 mg/mL in Tris saline, 0.02 % sodium azide, pH 7.3 with 0.5 % bovine serum albumin.
Preservative:	Sodium azide
Precaution of Use:	This product contains Sodium azide: a POISONOUS AND HAZARDOUS SUBSTANCE which should be handled by trained staff only.
Handling Advice:	Minimize freezing and thawing.
Storage:	-20 °C
Storage Comment:	Aliquot and store at -20°C, with minimal freeze/thawing. A working aliquot may be refrigerated at 4°C for a few weeks and still remain viable.



Flow Cytometry

Image 1. ABIN302142 Flow cytometric analysis of paraformaldehyde fixed HepG2 cells (blue line), permeabilized with 0.5% Triton. Primary incubation 1hr (10ug/ml) followed by Alexa Fluor 488 secondary antibody (1ug/ml). IgG control: Unimmunized goat IgG (black line) followed by Alexa Fluor 488 secondary antibody.