



[Go to Product page](#)

Datasheet for ABIN3021430  
**anti-ATP2A2 antibody (AA 111-253)**

8 Images

Overview

Quantity:	100 µL
Target:	ATP2A2
Binding Specificity:	AA 111-253
Reactivity:	Human
Host:	Rabbit
Clonality:	Polyclonal
Application:	Western Blotting (WB), Immunohistochemistry (IHC), Immunofluorescence (IF)

Product Details

Immunogen:	Recombinant fusion protein containing a sequence corresponding to amino acids 111-253 of human SERCA2/ATP2A2 (NP_733765.1).
Sequence:	NAENAIEALK EYEPENMGKVVY RQDRKSVQRI KAKDIVPGDI VEIavgdkvp ADIRLTSIKS TTLRVDQSIL TGESVSVIKH TDPVPDPRAV NQDKKNMLFS GTNIAAGKAM GVVVATGVNT EIGKIRDEMVA TEQERTPLQ QKL
Isotype:	IgG
Cross-Reactivity:	Human, Mouse, Rat
Characteristics:	Polyclonal Antibodies
Purification:	Affinity purification

Target Details

Target:	ATP2A2
---------	--------

## Target Details

---

Alternative Name:	ATP2A2 ( <a href="#">ATP2A2 Products</a> )
Background:	<p>This gene encodes one of the SERCA Ca(2+)-ATPases, which are intracellular pumps located in the sarcoplasmic or endoplasmic reticula of muscle cells. This enzyme catalyzes the hydrolysis of ATP coupled with the translocation of calcium from the cytosol into the sarcoplasmic reticulum lumen, and is involved in regulation of the contraction/relaxation cycle. Mutations in this gene cause Darier-White disease, also known as keratosis follicularis, an autosomal dominant skin disorder characterized by loss of adhesion between epidermal cells and abnormal keratinization. Alternative splicing results in multiple transcript variants encoding different isoforms.,ATP2B,DAR,DD,SERCA2,ATP2A2/SERCA2,ATP2A2,Cancer,Signal Transduction,Endocrine &amp; Metabolism,Neuroscience,Calcium Signaling,Neurodegenerative Diseases,Cardiovascular,Heart,Contractility,ATP2A2</p>
Molecular Weight:	109 kDa/111 kDa/114 kDa
Gene ID:	488
UniProt:	<a href="#">P16615</a>
Pathways:	<a href="#">Myometrial Relaxation and Contraction</a> , <a href="#">ER-Nucleus Signaling</a> , <a href="#">Ribonucleoside Biosynthetic Process</a>

## Application Details

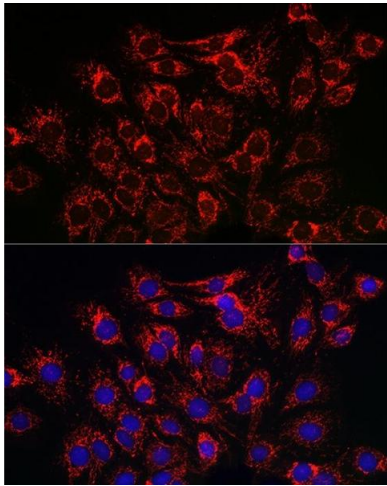
---

Application Notes:	WB,1:500 - 1:2000,IHC,1:50 - 1:200,IF,1:10 - 1:100
Restrictions:	For Research Use only

## Handling

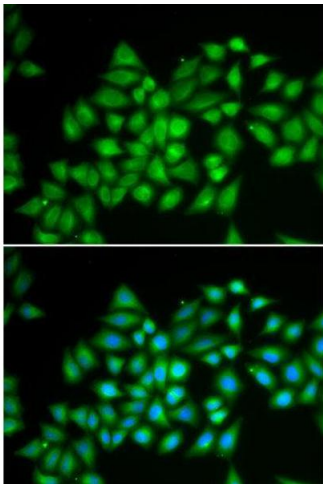
---

Format:	Liquid
Buffer:	PBS with 0.02 % sodium azide,50 % glycerol, pH 7.3.
Preservative:	Sodium azide
Precaution of Use:	This product contains Sodium azide: a POISONOUS AND HAZARDOUS SUBSTANCE which should be handled by trained staff only.
Handling Advice:	Avoid freeze / thaw cycles
Storage:	-20 °C
Storage Comment:	Store at -20°C. Avoid freeze / thaw cycles.



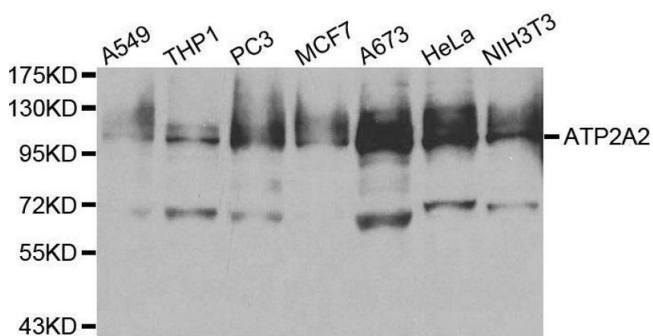
### Immunohistochemistry

**Image 1.** Immunohistochemistry of paraffin-embedded rat heart using SERC/ Rabbit pAb (ABIN3021429, ABIN3021430, ABIN3021431 and ABIN6215028) at dilution of 1:150 (40x lens). Perform high pressure antigen retrieval with 10 mM citrate buffer pH 6.0 before commencing with IHC staining protocol.



### Immunofluorescence

**Image 2.**



### Western Blotting

**Image 3.** Western blot analysis of extracts of various cell lines, using ATP2A2 antibody.

Please check the [product details page](#) for more images. Overall 8 images are available for ABIN3021430.