

Datasheet for ABIN302147

**anti-G Protein-Coupled Receptor 119 antibody (C-Term)**[Go to Product page](#)**1** Image

## Overview

Quantity:	100 µg
Target:	G Protein-Coupled Receptor 119 (GPR119)
Binding Specificity:	C-Term
Reactivity:	Human
Host:	Goat
Clonality:	Polyclonal
Conjugate:	This G Protein-Coupled Receptor 119 antibody is un-conjugated
Application:	Western Blotting (WB), ELISA

## Product Details

Purpose:	GPR119
Immunogen:	Peptide with sequence SARNCGPERPRESS, from the C Terminus (near) of the protein sequence according to NP_848566.1.
Sequence:	SARNCGPERP RESS
Isotype:	IgG
Cross-Reactivity:	Human, Mouse, Pig
Purification:	Purified from goat serum by ammonium sulphate precipitation followed by antigen affinity chromatography using the immunizing peptide.
Grade:	Verified

## Target Details

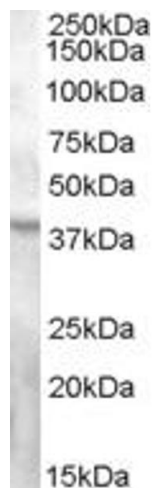
Target:	G Protein-Coupled Receptor 119 (GPR119)
Alternative Name:	GPR119 ( <a href="#">GPR119 Products</a> )
Background:	GPR119 , G protein-coupled receptor 119 , RP1-2013.4, GPCR2N: MGC119957N: hGPCR2, G-protein coupled receptor 2
Gene ID:	139760
NCBI Accession:	<a href="#">NP_848566</a>
Pathways:	<a href="#">Hormone Transport</a> , <a href="#">Peptide Hormone Metabolism</a>

## Application Details

Application Notes:	Western Blot: Approx. 38 kDa band observed in Human Ovary lysates (calculated MW of 36.9 kDa according to NP_848566.1). Recommended concentration: 0.3-1 µg/mL. Peptide ELISA: antibody detection limit dilution 1:2000.
Restrictions:	For Research Use only

## Handling

Format:	Liquid
Concentration:	0.5 mg/mL
Buffer:	Supplied at 0.5 mg/mL in Tris saline, 0.02 % sodium azide, pH 7.3 with 0.5 % bovine serum albumin.
Preservative:	Sodium azide
Precaution of Use:	This product contains Sodium azide: a POISONOUS AND HAZARDOUS SUBSTANCE which should be handled by trained staff only.
Handling Advice:	Minimize freezing and thawing.
Storage:	-20 °C
Storage Comment:	Aliquot and store at -20°C, with minimal freeze/thawing. A working aliquot may be refrigerated at 4°C for a few weeks and still remain viable.



**Image 1.** ABIN302147 (0.3µg/ml) staining of Human Ovary lysate (35µg protein in RIPA buffer). Primary incubation was 1 hour. Detected by chemiluminescence.