



[Go to Product page](#)

Datasheet for ABIN3021477
anti-MSH2 antibody (AA 1-300)

7 Images

Overview

Quantity:	100 µL
Target:	MSH2
Binding Specificity:	AA 1-300
Reactivity:	Human
Host:	Rabbit
Clonality:	Polyclonal
Conjugate:	This MSH2 antibody is un-conjugated
Application:	Western Blotting (WB), Immunofluorescence (IF), Immunoprecipitation (IP)

Product Details

Immunogen:	Recombinant fusion protein containing a sequence corresponding to amino acids 1-300 of human MSH2 (NP_000242.1).
Sequence:	MAVQPKETLQ LESAAEVGFV RFFQGMPEKP TTTVRLFDRG DFYTAHGEDA LLAAREVFKT QGVIKYMGPA GAKNLQSVVL SKMNFESVK DLLLVRQYRV EVYKNRAGNK ASKENDWYLA YKASPGNLSQ FEDILFGNND MSASIGVGVG KMSAVDGQRQ VGVGYVDSIQ RKLGLCEFPD NDQFSNLEAL LIQIGPKECV LPGGETAGDM GKLQRQIIQRG GILITERKKA DFSTKDIYQD LNRLKGGKKG EQMNSAVLPE MENQVAVSSL SAVIKFLELL SDDSNFGQFE LTTDFDSQYM
Isotype:	IgG
Cross-Reactivity:	Human, Mouse, Rat
Characteristics:	Polyclonal Antibodies

Target Details

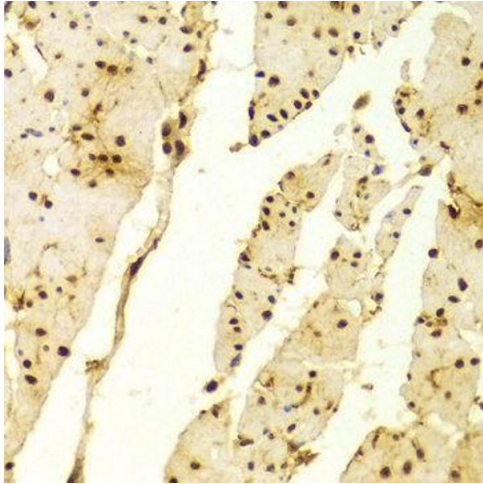
Target:	MSH2
Alternative Name:	MSH2 (MSH2 Products)
Background:	This locus is frequently mutated in hereditary nonpolyposis colon cancer (HNPCC). When cloned, it was discovered to be a human homolog of the E. coli mismatch repair gene mutS, consistent with the characteristic alterations in microsatellite sequences (RER+ phenotype) found in HNPCC. Two transcript variants encoding different isoforms have been found for this gene.,MSH2,COCA1,FCC1,HNPCC,HNPCC1,LCFS2,Epigenetics & Nuclear Signaling,DNA Damage & Repair,Cancer,Tumor suppressors,Cell Biology & Developmental Biology,Apoptosis,MSH2
Molecular Weight:	97 kDa/104 kDa
Gene ID:	4436
UniProt:	P43246
Pathways:	DNA Damage Repair , Production of Molecular Mediator of Immune Response

Application Details

Application Notes:	WB,1:500 - 1:2000,IF,1:50 - 1:200,IP,1:20 - 1:50
Restrictions:	For Research Use only

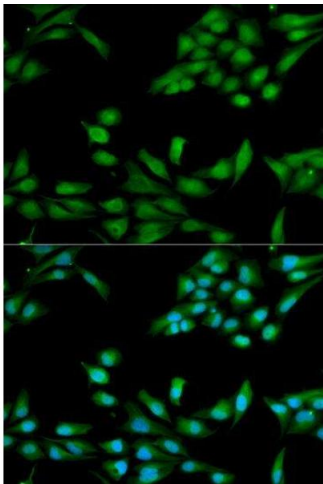
Handling

Format:	Liquid
Buffer:	PBS with 0.02 % sodium azide,50 % glycerol, pH 7.3.
Preservative:	Sodium azide
Precaution of Use:	This product contains Sodium azide: a POISONOUS AND HAZARDOUS SUBSTANCE which should be handled by trained staff only.
Handling Advice:	Avoid freeze / thaw cycles
Storage:	-20 °C
Storage Comment:	Store at -20°C. Avoid freeze / thaw cycles.



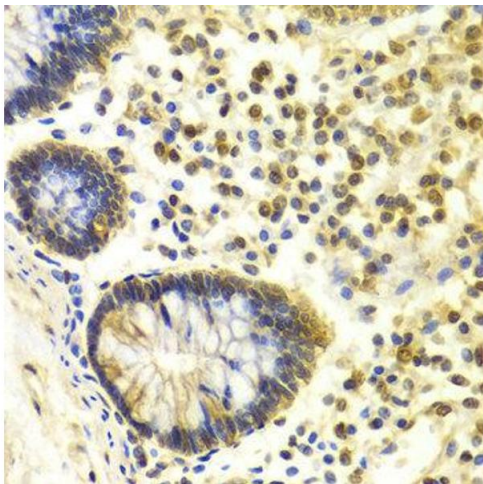
Immunohistochemistry

Image 1. Immunohistochemistry of paraffin-embedded Human esophageal using MSH2 antibody at dilution of 1:100 (x400 lens).



Immunofluorescence

Image 2. Immunofluorescence analysis of HeLa cell using MSH2 antibody. Blue: DAPI for nuclear staining.



Immunohistochemistry

Image 3. Immunohistochemistry of paraffin-embedded Human colon using MSH2 antibody at dilution of 1:100 (x400 lens).

Please check the [product details page](#) for more images. Overall 7 images are available for ABIN3021477.