

Datasheet for ABIN3021498
anti-AMACR antibody (AA 1-198)

5 Images

[Go to Product page](#)

Overview

Quantity:	100 µL
Target:	AMACR
Binding Specificity:	AA 1-198
Reactivity:	Human
Host:	Rabbit
Clonality:	Polyclonal
Conjugate:	This AMACR antibody is un-conjugated
Application:	Western Blotting (WB), Immunohistochemistry (IHC), Immunofluorescence (IF)

Product Details

Immunogen:	Recombinant fusion protein containing a sequence corresponding to amino acids 1-198 of human AMACR (NP_976316.1).
Sequence:	MALQGISVVE LSG LAPGPFC AMVLADFGAR VVRVDRPGSR YDVSRLGRGK RSLVLDLKQP RGA AVLRRRLC KRSDV LLEPF RRGVMEKLQL GPEILQRENPLIYARLSGF GQSGSFCRLA GHDINYLALS GGRNSIFKFF SVENSEIESV GSTSRTEHVG WWSTFLYDLQ DSRWGIHGCW SNRTPVLRAA DQRTWTKV
Isotype:	IgG
Cross-Reactivity:	Human, Mouse, Rat
Characteristics:	Polyclonal Antibodies
Purification:	Affinity purification

Target Details

Target:	AMACR
Alternative Name:	AMACR (AMACR Products)
Background:	<p>This gene encodes a racemase. The encoded enzyme interconverts pristanoyl-CoA and C27-bile acylCoAs between their (R)- and (S)-stereoisomers. The conversion to the (S)-stereoisomers is necessary for degradation of these substrates by peroxisomal beta-oxidation. Encoded proteins from this locus localize to both mitochondria and peroxisomes. Mutations in this gene may be associated with adult-onset sensorimotor neuropathy, pigmentary retinopathy, and adrenomyeloneuropathy due to defects in bile acid synthesis. Alternatively spliced transcript variants have been described. Read-through transcription also exists between this gene and the upstream neighboring C1QTNF3 (C1q and tumor necrosis factor related protein 3) gene.,AMACR,AMACRD,CBAS4,P504S,RACE,RM,Epigenetics & Nuclear Signaling,Cancer,Signal Transduction,Cell Biology & Developmental Biology,Endocrine & Metabolism,Mitochondrial metabolism,Mitochondrial markers,Lipid Metabolism,AMACR</p>
Molecular Weight:	22 kDa/25 kDa/42 kDa/43 kDa
Gene ID:	23600
UniProt:	Q9UHK6
Pathways:	Monocarboxylic Acid Catabolic Process

Application Details

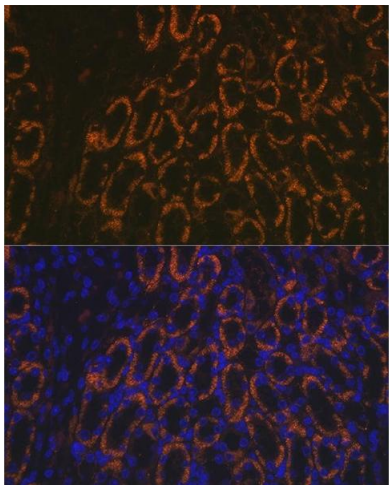
Application Notes:	WB,1:500 - 1:2000,IHC,1:50 - 1:200,IF,1:50 - 1:200
Restrictions:	For Research Use only

Handling

Format:	Liquid
Buffer:	PBS with 0.02 % sodium azide,50 % glycerol, pH 7.3.
Preservative:	Sodium azide
Precaution of Use:	This product contains Sodium azide: a POISONOUS AND HAZARDOUS SUBSTANCE which should be handled by trained staff only.
Handling Advice:	Avoid freeze / thaw cycles
Storage:	-20 °C

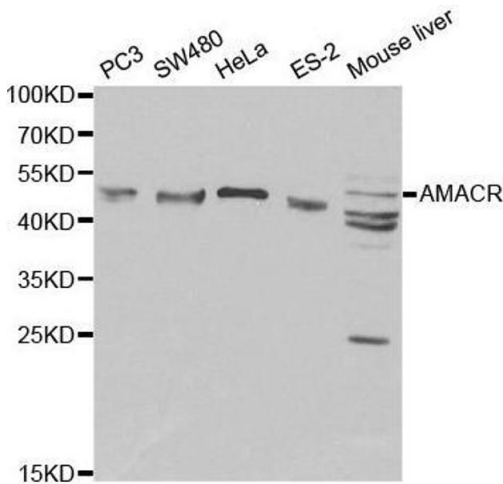
Storage Comment: Store at -20°C. Avoid freeze / thaw cycles.

Images



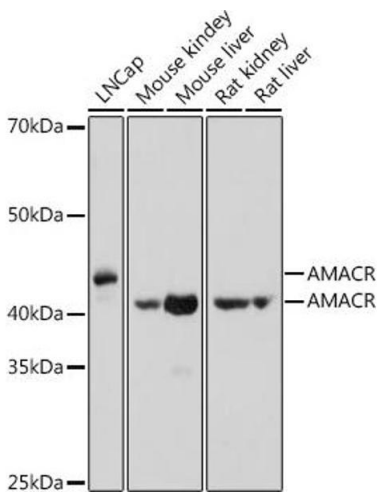
Immunofluorescence

Image 1. Immunofluorescence analysis of mouse kidney using AMACR Rabbit pAb (ABIN3021497, ABIN3021498, ABIN3021499 and ABIN6215153) at dilution of 1:100 (40x lens). Blue: DAPI for nuclear staining.



Western Blotting

Image 2. Western blot analysis of extracts of various cell lines, using AMACR antibody.



Western Blotting

Image 3. Western blot analysis of extracts of various cell lines, using AMACR antibody (ABIN3021497, ABIN3021498, ABIN3021499 and ABIN6215153) at 1:1000 dilution. Secondary antibody: HRP Goat Anti-Rabbit IgG (H+L) (ABIN1684268 and ABIN3020597) at 1:10000 dilution. Lysates/proteins: 25 µg per lane. Blocking buffer: 3 % nonfat dry milk in TBST. Detection: ECL Basic Kit (RM00020). Exposure time: 1s.

Please check the [product details page](#) for more images. Overall 5 images are available for ABIN3021498.